



**Guide Price**  
**£200,000**

**Leasehold**

1x  1x  1x 

**The Pinnacles, 156162**  
**High Road, Chadwell**  
**Heath, Romford, Essex,**  
**RM6**

**OVER 60?**

Secure this property  
for up to **59% less!**

 **DOUGLAS  
ALLEN**  
Helping you move forwards



## Main features

- Well presented first floor apartment
- Chain Free & Long Lease
- Bus & road links to Ilford & Romford Town Centre
- In-house gym for residents
- Roof top communal garden with panoramic views

## Accommodation

### FIRST FLOOR

Entrance Hall

Lounge/Diner: 25'2 x 10'7 (7.68m x 3.23m)

Bedroom 1: 14'3 x 9'7 (4.35m x 2.92m)

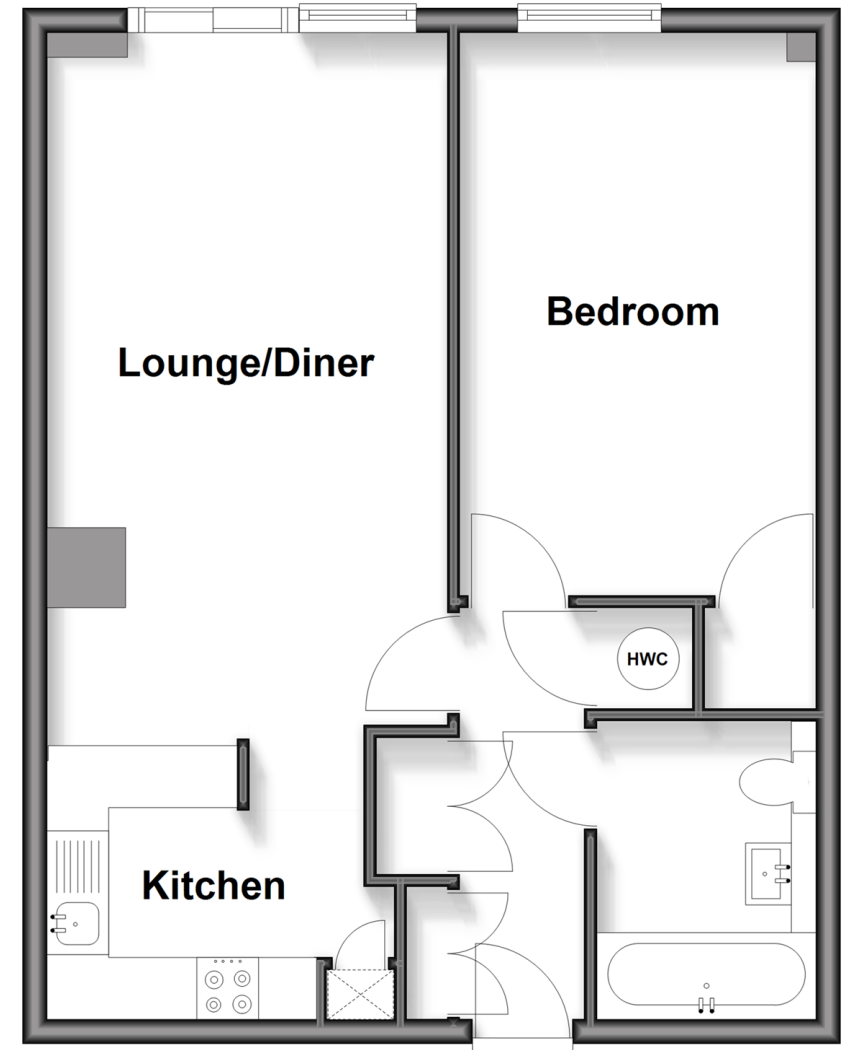
Bathroom

### OUTSIDE

Allocated Parking

## First Floor

Approx. 49.7 sq. metres (534.6 sq. feet)



**Call Chadwell Heath - 020 8597 0043 ■ [douglasallen.co.uk](http://douglasallen.co.uk)**

- A private rental licensing scheme applies to some properties in this area, please check with the Local Authority before proceeding
- Legal advice should be taken to verify fixtures/fittings, planning, alterations and/or lease details
- Appliances & services are untested, dimensions are approximate and floor plans are not to scale
- Through a Homewise Home For Life Plan people aged 60+ can secure this property for up to 59% less, by purchasing a Lifetime Lease



50714274/20260131/MH/NK