



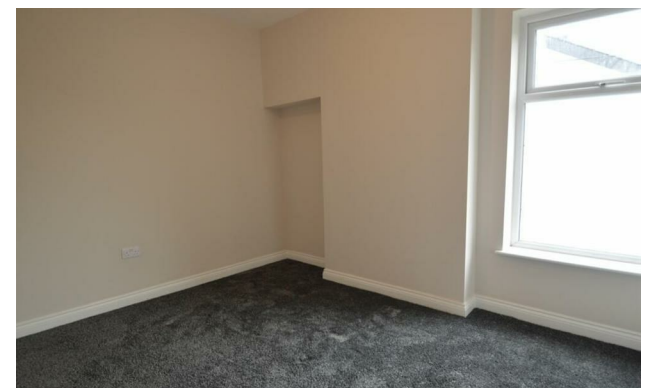
*Jordan* fishwick

51 CHURCH LANE SALE M33 5GW  
PCM £1,400 PCM

## 51 CHURCH LANE SALE M33 5GW

\*\*\* AVAILABLE NOW \*\*\* Church Lane, Sale

Jordan Fishwick are delighted to bring to the rental market this well presented large two bedroom house on Church Lane. In brief the property comprises; entrance hall, lounge, dining room, kitchen with appliances and door leading out to rear garden. To the first floor there are two double bedrooms and a large bathroom suite with shower over bath. Externally there is a courtyard rear garden. The property also benefits from gas central heating, double glazing, close to Ashton-on-Mersey Village and Sale Town Centre. Offered on an unfurnished basis. Call now to view - 0161 976 5080



- END TERRACE
- UNFURNISHED
- TWO BEDROOMS
- TWO RECEPTION ROOMS
- EPC RATING D
- COUNCIL TAX BAND B

Energy Efficiency Rating		Environmental Impact (CO <sub>2</sub> ) Rating	
	Current	Potential	
Very energy efficient - lower running costs			Very environmentally friendly - lower CO <sub>2</sub> emissions
(92 plus) A			(92 plus) A
(81-91) B			(81-91) B
(69-80) C			(69-80) C
(55-68) D			(55-68) D
(39-54) E			(39-54) E
(21-38) F			(21-38) F
(1-20) G			(1-20) G
Not energy efficient - higher running costs			Not environmentally friendly - higher CO <sub>2</sub> emissions
<b>England &amp; Wales</b>	EU Directive 2002/91/EC	<b>81</b>	<b>England &amp; Wales</b>
		<b>63</b>	EU Directive 2002/91/EC