



## Meadow Rise, £350,000

- SPACIOUS DETACHED PROPERTY
- 3 BEDROOMS
- ATTACHED GARAGE AND OFF ROAD PARKING
- PRIVATE GARDENS
- NO ONWARD CHAIN
- END OF CUL-DE-SAC LOCATION
- UTILITY ROOM
- EPC Rating: C
- Council Tax: E



 3  1  2





## About the property

We are delighted to present this fantastic three-bedroom detached family home, ideally positioned on a generous corner plot within a desirable cul-de-sac, in the popular area of Undy. Offered to the market with NO ONWARD CHAIN, this wonderful property is perfect for families, couples and commuters alike.

Meadow Rise boasts spacious, well-proportioned accommodation across two floors, featuring a large living room, separate dining room with direct access to the kitchen, Downstairs W.C and family bathroom. The property also benefits from an attached garage, ample off-road parking to the front and beautiful private gardens to the rear - ideal for relaxing or entertaining.

Undy is a highly regarded village which offers the perfect blend of countryside charm and everyday convenience. Popular with families and commuters alike. Residents enjoy a range of local amenities and well regarded schools nearby and also benefit from beautiful walks and outdoor activities on the doorstep!

Conveniently located for commuters, the property offers excellent access to Bristol, Cardiff and Newport via the nearby M48 and M4 motorway links.







## Accommodation

### Living Room

17' x 13' 3" ( 5.18m x 4.04m )

### Dining Room

10' 11" x 7' 9" ( 3.33m x 2.36m )

### Kitchen

10' 11" x 7' 7" ( 3.33m x 2.31m )

### Utility

11' 5" x 8' 2" ( 3.48m x 2.49m )

### Bedroom 1

13' 5" x 8' 10" ( 4.09m x 2.69m )

### Bedroom 2

10' 10" x 9' 1" ( 3.30m x 2.77m )

### Bedroom 3

9' 7" x 6' 6" ( 2.92m x 1.98m )

### Bathroom

6' 2" x 6' 1" ( 1.88m x 1.85m )

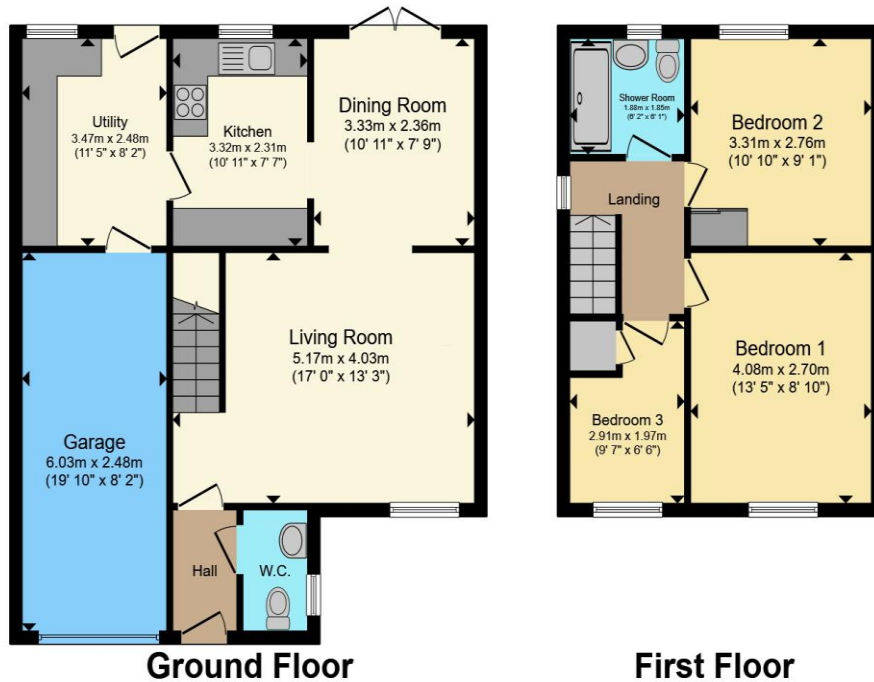
### Garage

19' 10" x 8' 2" ( 6.05m x 2.49m )

01291 630876

chepstow@peteralan.co.uk

## Floorplan



Total floor area 105.7 m<sup>2</sup> (1,138 sq.ft.) approx

This floor plan is for illustrative purposes only. It is not drawn to scale. Any measurements, floor areas (including any total floor area), openings and orientation are approximate. No details are guaranteed, they cannot be relied upon for any purpose and they do not form part of any agreement. No liability is taken for any error, omission or misstatement. A party must rely upon its own inspection(s). Powered by [www.propertybox.io](http://www.propertybox.io)

## Important Information

Note while we endeavour to make our sales details accurate and reliable, if there is any point which is of particular interest to you, please contact the office and we will be pleased to confirm the position for you. We have not personally tested any apparatus, equipment, fixtures, fittings or services and cannot verify they are in working order or fit for their purposes. Nothing in these particulars is intended to indicate that carpets or curtains, furnishings or fittings, electrical goods (whether wired or not). Gas fires or light fittings or any other fixtures not expressly included form part of the property offered for sale. This computer generated Floorplan, if applicable, is intended as a general guide to the layout and design of the property. It is not to scale and should not be relied upon for dimensions. Tenure: We cannot confirm the tenure of the property as we have not had access to the legal documents. The buyer is advised to obtain verification from their solicitor or surveyor.

Peter Alan Limited is registered in England and Wales under company number 2073153, Registered Office is Cumbria House, 16-20 Hockliffe Street, Leighton Buzzard, Bedfordshire, LU7 1GN. VAT Registration Number is 500 2481 05. For activities relating to regulated mortgages and non-investment insurance contracts, Peter Alan Limited is an appointed representative of Connells Limited which is authorised and regulated by the Financial Conduct Authority. Connells Limited's Financial Services Register number is 302221. Most buy-to-let