

# BRUCE MATHER

---

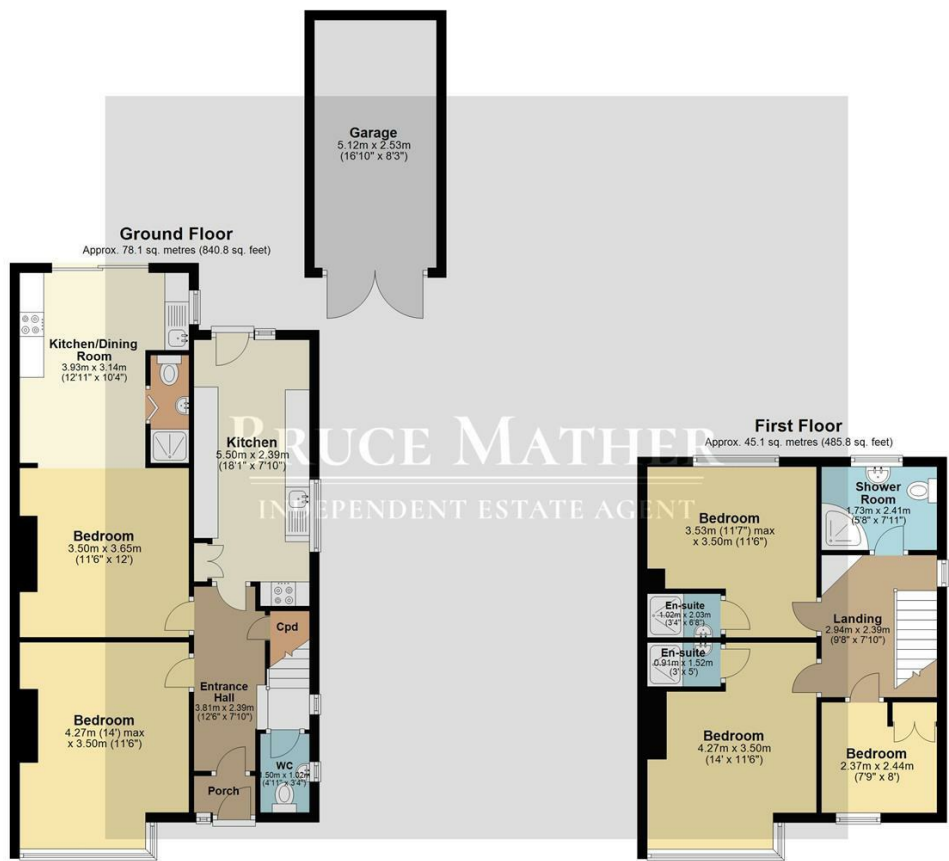
## INDEPENDENT ESTATE AGENT



**12 Rowley Road, Boston, PE21 6JE**  
**Asking Price £159,999**

A four bedroom semi-detached property in a convenient residential area in Boston, with a garden and parking. This house is currently rented out and has three bedrooms upstairs, two being ensuite, and a main shower room. Downstairs, the front room is being utilised as a further bedroom, plus there is a WC and a communal kitchen leading to the garden which is mainly lawn. The final room downstairs is a studio/bedroom with an ensuite and kitchenette. So, the accommodation is flexible and being although currently rented but equally could make an attractive home. Local amenities, shops, schools and transport are just a walk or short drive away. Please call Bruce Mather Estate Agents on 01205 365032 to arrange your viewing.

Floor Plan

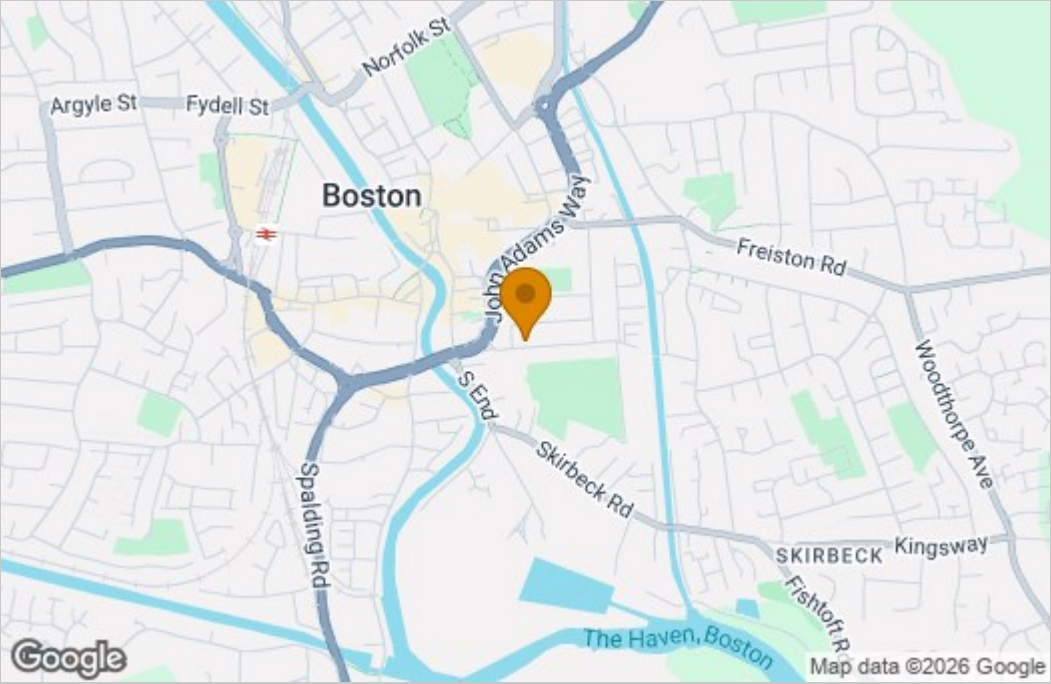


Total area: approx. 123.2 sq. metres (1326.6 sq. feet)

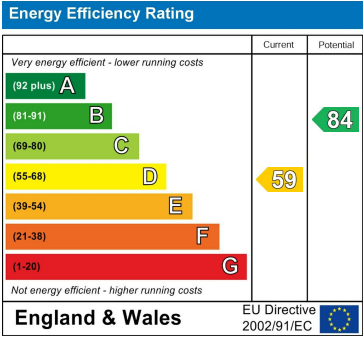
All images used are for illustrative purposes. Images are for guidance only and may not necessarily represent a true and accurate depiction of the condition of property. Floor plans are intended to give an indication of the layout only. All images, floor plans and dimensions are not intended to form part any contract.  
Plan produced using PlanUp.



Area Map



Energy Efficiency Graph



These particulars, whilst believed to be accurate are set out as a general outline only for guidance and do not constitute any part of an offer or contract. Intending purchasers should not rely on them as statements of representation of fact, but must satisfy themselves by inspection or otherwise as to their accuracy. No person in this firms employment has the authority to make or give any representation or warranty in respect of the property.