



DRAPERS YARD, SW18

£450,000

- Modern apartment complex
- One double bedroom
- High specification
- 24 hour concierge service
- Open plan kitchen/living
- Energy rating: B





ABOUT THE HOME

A beautifully presented one bedroom modern apartment set within a contemporary development, offering bright and spacious accommodation extending to approximately 531 sq. Ft.

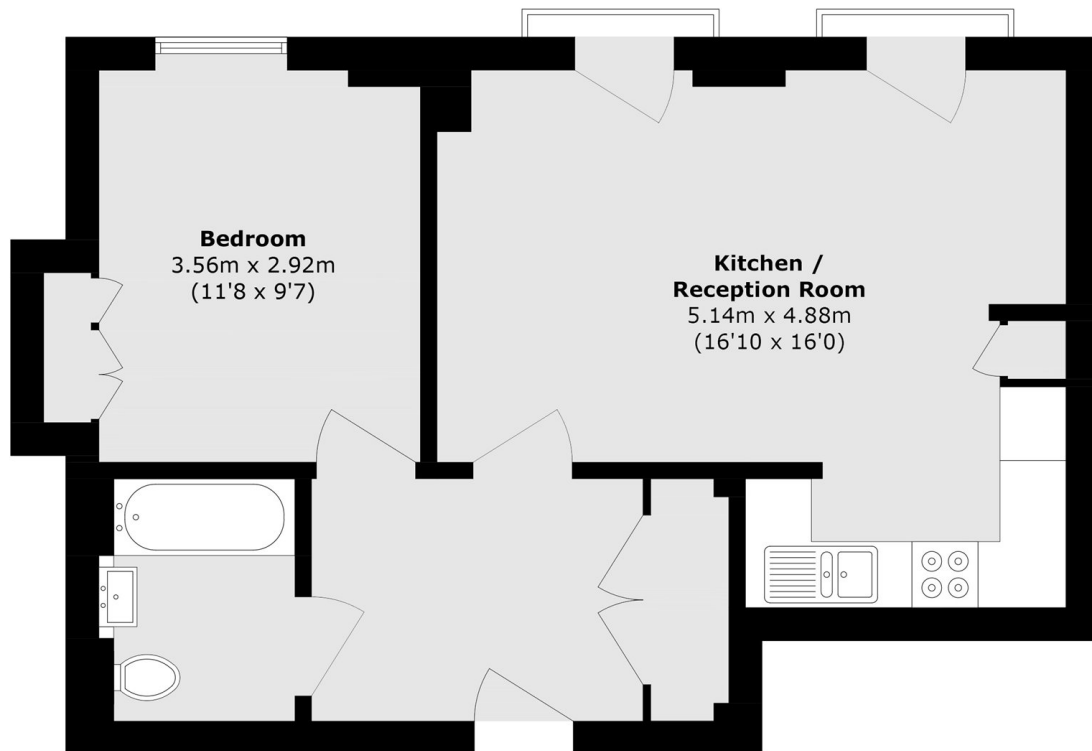
Finished to a high standard throughout, the property benefits from excellent natural light via full height windows and comprises a generous double bedroom with built in wardrobes, a stylish modern bathroom and useful hallway storage. The impressive open plan kitchen/reception room provides ample space for dining and entertaining, with a sleek contemporary kitchen featuring integrated appliances and a bright reception area overlooking the communal courtyard.

Further benefits include wood flooring, recessed lighting, lift access and well maintained communal surroundings.

Drapers Yard is located just 0.4 miles from Wandsworth Town station, this development is located for ease of access to central London. As well as providing a range of restaurants, trendy cafés and the newly extended Southside Shopping Centre.







Total area (approx.): 49.4 sq. m (531.7 sq. ft)

JACKSONS EARLSFIELD

372-374 Garratt Lane,
Earlsfield, London, SW18 4ES
Sales: 020 8971 7979
Lettings: 020 8971 7070

Energy Rating: B We aim to make our particulars both accurate and reliable. However they are not guaranteed; nor do they form part of an offer or contract. If you require clarification on any points then please contact us, especially if you're traveling some distance to view. Please note that appliances and heating systems have not been tested and therefore no warranties can be given as to their good working order.