

## Goodge Street, W1T

£530 Per week

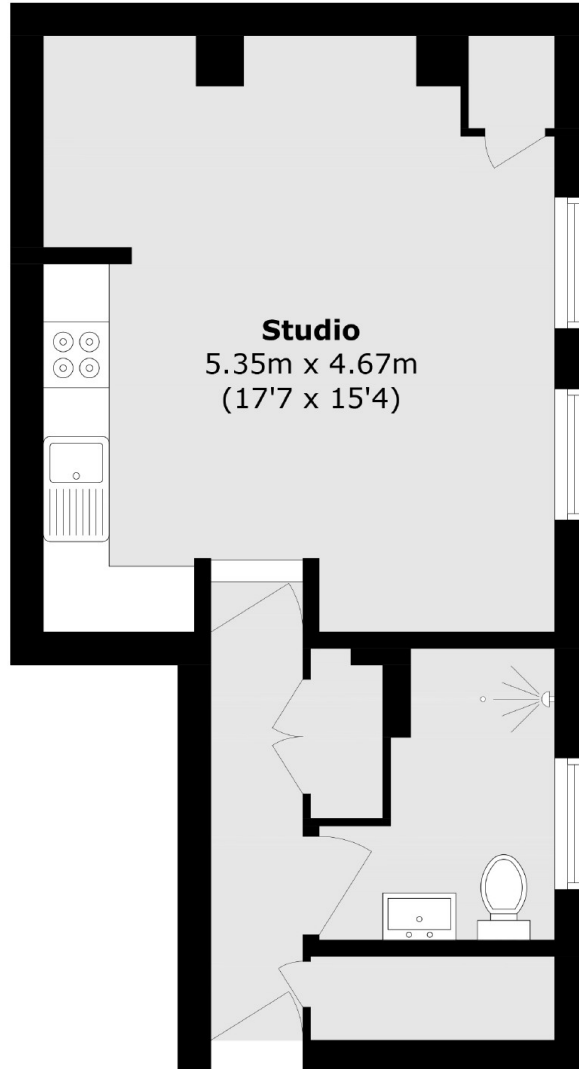
This fully furnished modern studio apartment is conveniently located in a secure building in the heart of Fitzrovia. The apartment has wooden floors throughout as well as good storage space.

Close proximity to Goodge Street, Warren Street and Tottenham Court Road train stations. Just moments away from famous Charlotte Street coffee shops and Oxford Street.

### Features

- Central Location
- Extremely Bright
- UN-FURNISHED
- Wooden Floors
- Good Storage
- Modern

# Goodge Street, London, W1T



Total area (approx.): 37.1 sq. m (399.3 sq. ft)