



**Upper Tulse Hill, SW2**

**£1,600,000**

**Dexters**



## Upper Tulse Hill, SW2

At just under 2,700 sqft is this five bedroom family home. With a grand facade, this property has a large gated driveway as well as a spacious entrance hall. There is a vast amount of space for a family to enjoy with a dual aspect double reception room fitted with feature fireplaces and built-in alcove units; A further reception room is currently being used as a study.

A modern kitchen/diner sits to the rear of the property with access onto the private garden. There is also a downstairs w/c and utility cupboard. The garden is spacious and has both a paved and grassed area as well as a huge shed and rear access which is handy for garden maintenance.

Upstairs there are five bedrooms, three of which, on the first floor, are large doubles all with built-in wardrobes. There is a smaller bedroom that is currently being used as a study but could also be a nursery and these rooms are all serviced by the generous family bathroom. The top floor is an incredible and flexible space with en-suite and kitchenette as well as plenty of eaves storage. This part of the property is ideal for a granny annexe, live in Au-pair or guest space.

Upper Tulse Hill is a residential street nestled in between Streatham Hill & Brixton Hill and benefits from a selection of local amenities, green open spaces of Brockwell Park nearby and transport via Brixton, Herne Hill & Streatham Hill.

### Features

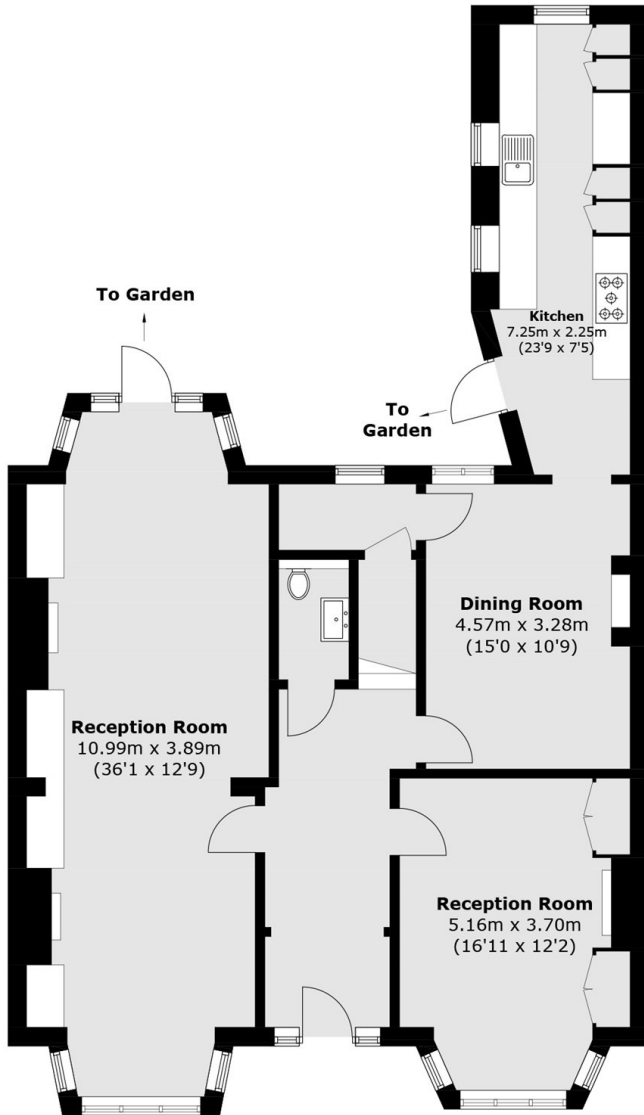
- Five Bedrooms
- Gated Drive
- Great Location
- Neutrally Decorated
- Two Receptions
- Large Shed



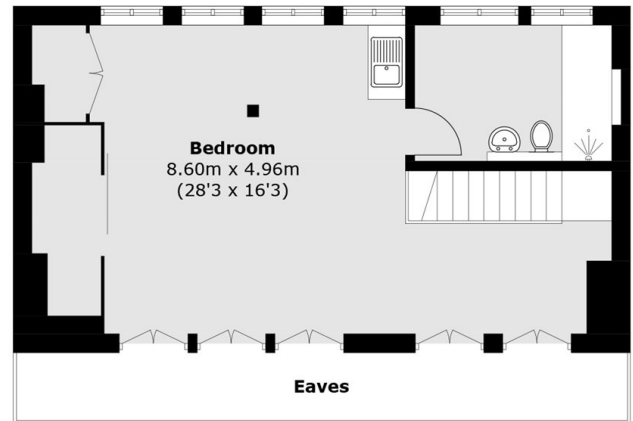




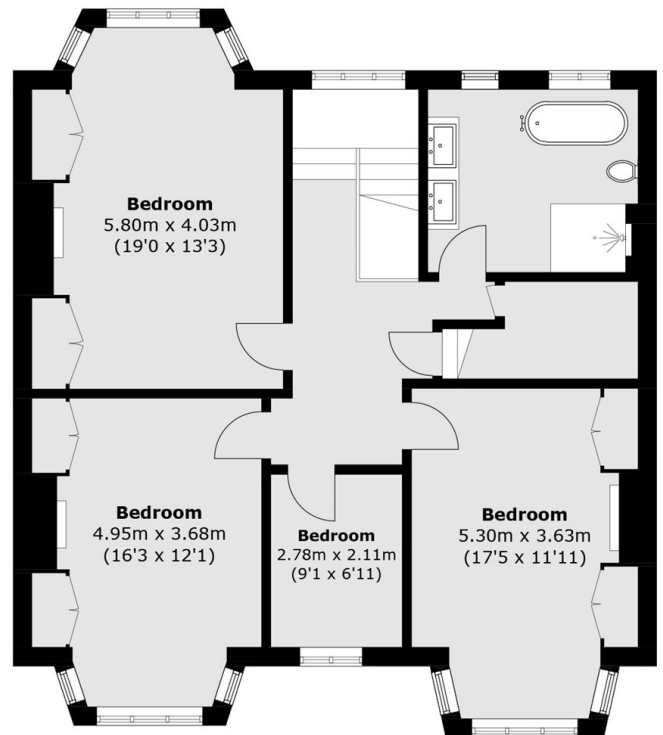
# Upper Tulse Hill, London, SW2



**Ground Floor**



**Second Floor**



**First Floor**

Total area (approx.): 248.5 sq. m (2,674.9 sq. ft)  
(Excluding Eaves)