



FLOOD STREET, SW3

£1,350,000

Private entrance
Private patio garden
Good condition
Old Chelsea address
Long lease
Energy rating c

@marshandparsons
marshandparsons.co.uk

MARSH &
PARSONS



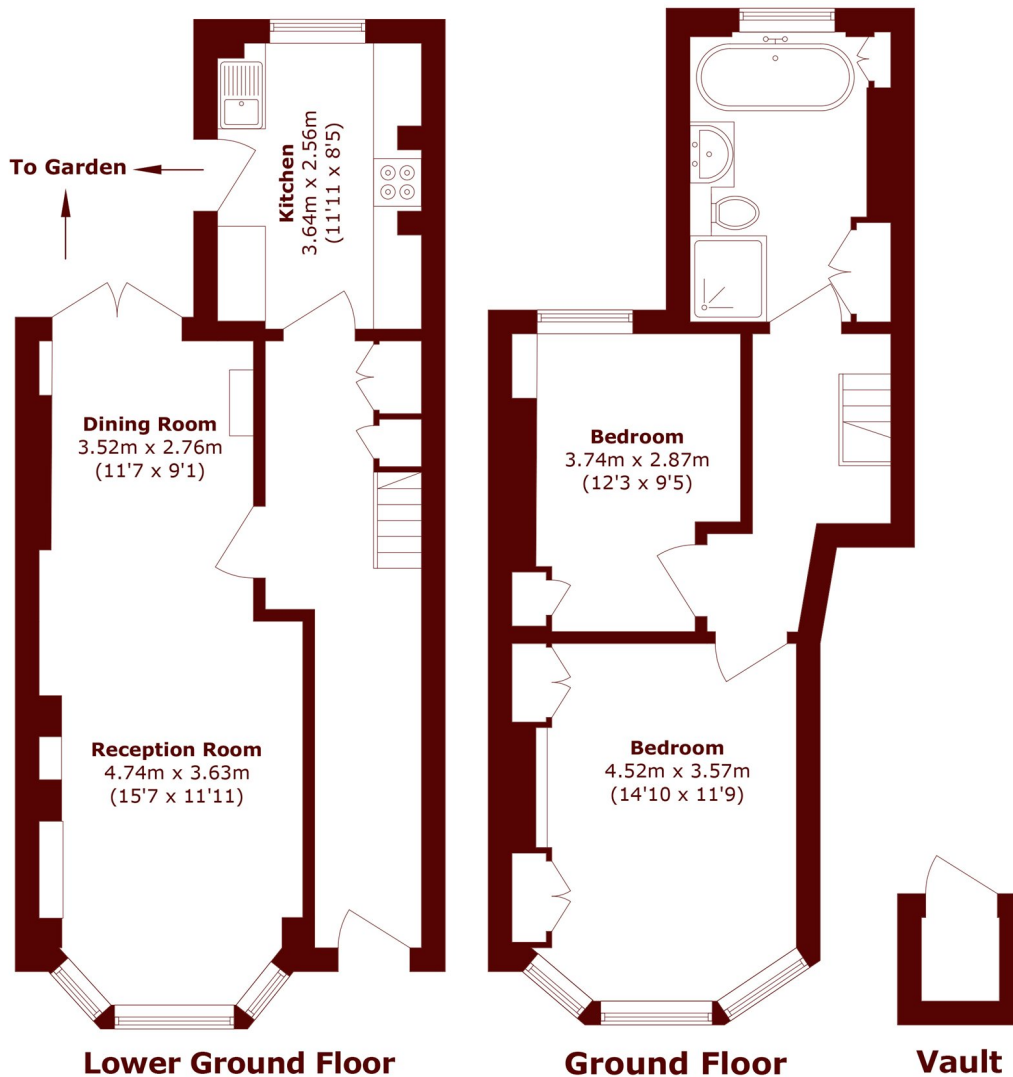
ABOUT THE PROPERTY

A beautifully presented two-bedroom maisonette located on the sought-after Flood Street, offering the rare benefit of its own private front door and a charming patio garden.

Ideally situated on Flood Street, the property enjoys close proximity to local amenities, transport links, and green spaces, making it an excellent choice for professionals, couples, or small families seeking both convenience and character.



STEP INSIDE FLOOD STREET



Total area (approx.): 89.4 sq. m (962.3 sq. ft)
Vault area (approx.): 1.0 sq. m (10.7 sq. ft)

Chelsea
020 7591 5580

Energy Rating: C We aim to make our particulars both accurate and reliable. However, they are not guaranteed; nor do they form part of an offer or contract. If you require clarification on any points then please contact us, especially if you're traveling some distance to view. Please note that appliances and heating systems have not been tested and therefore no warranties can be given as to their good working order

MARSH &
PARSONS