

Harecastle Avenue, Eccles

Manchester



In Excess of £250,000

Harecastle Avenue

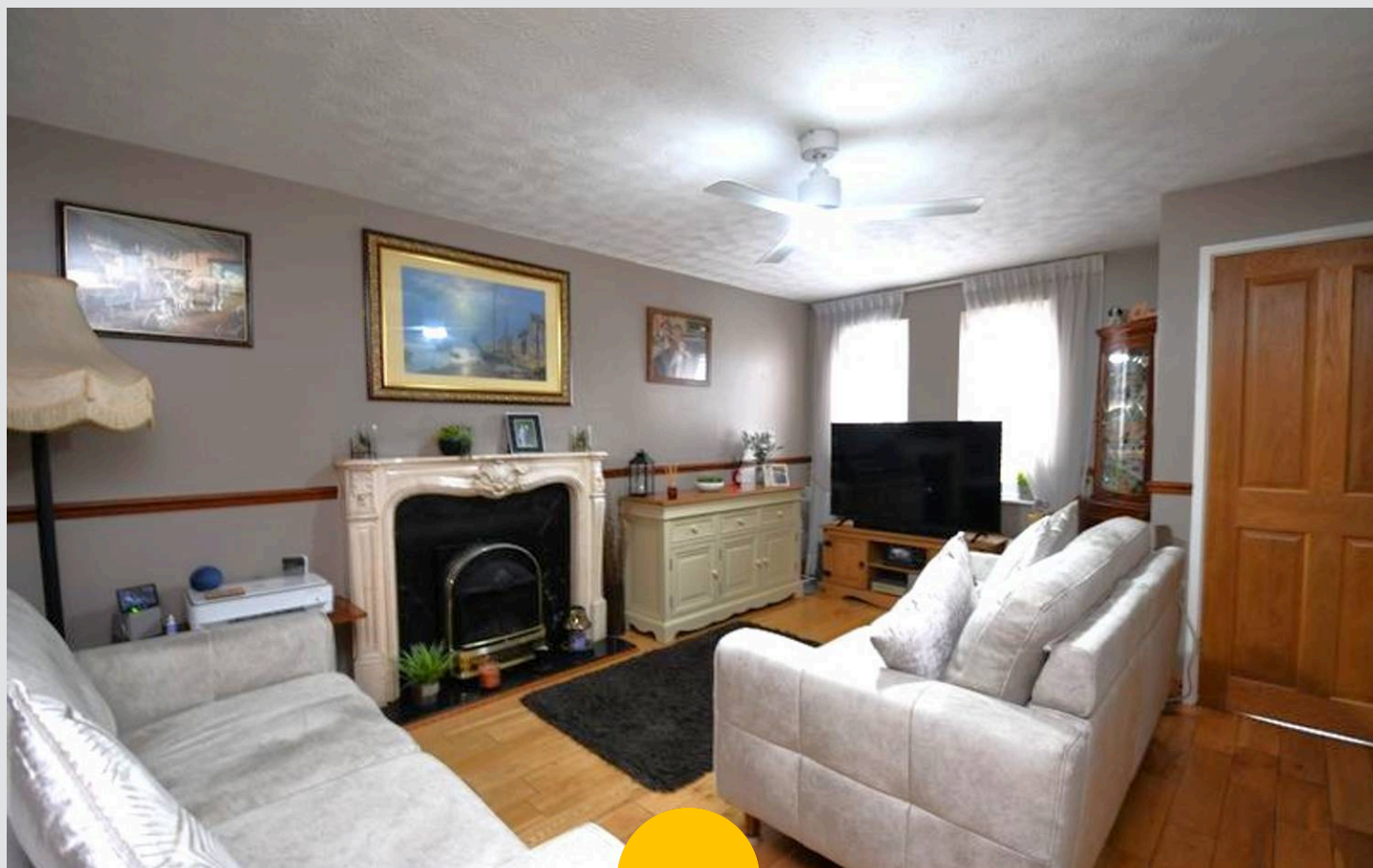
Eccles, Manchester

Three bedroom semi-detached property tucked away on a small CUL DE SAC on this POPULAR DEVELOPMENT! Boasting landscaped front and rear gardens and off-road parking to the front for multiple cars!

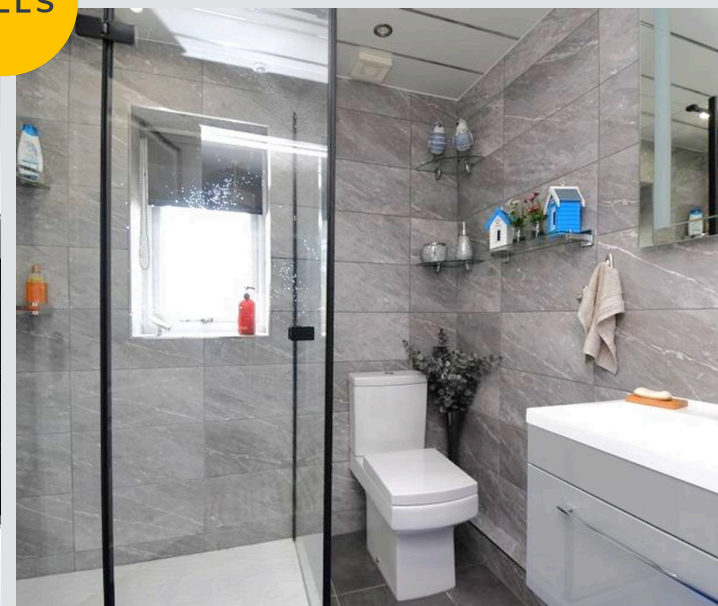
Council Tax band: C

Tenure: Leasehold

- Beautifully presented three bedroom semi-detached property
- Featuring landscaped front and rear gardens and off-road parking to the front for multiple cars
- Spacious family lounge
- Modern fitted kitchen diner
- Contemporary three-piece bathroom suite and downstairs W.C.
- Three generous sized bedrooms
- Perfect first time buy or family home!
- Situated on a popular development close to excellent amenities and transport links



HILLS



Entrance Hallway

8' 4" x 3' 2" (2.54m x 0.97m)

Lounge

14' 7" x 15' 10" (4.45m x 4.83m)

Kitchen

14' 6" x 9' 6" (4.42m x 2.90m)

Downstairs W.C.

3' 5" x 7' 2" (1.05m x 2.19m)

Landing

Bedroom One

8' 5" x 14' 4" (2.56m x 4.37m)

Bedroom Two

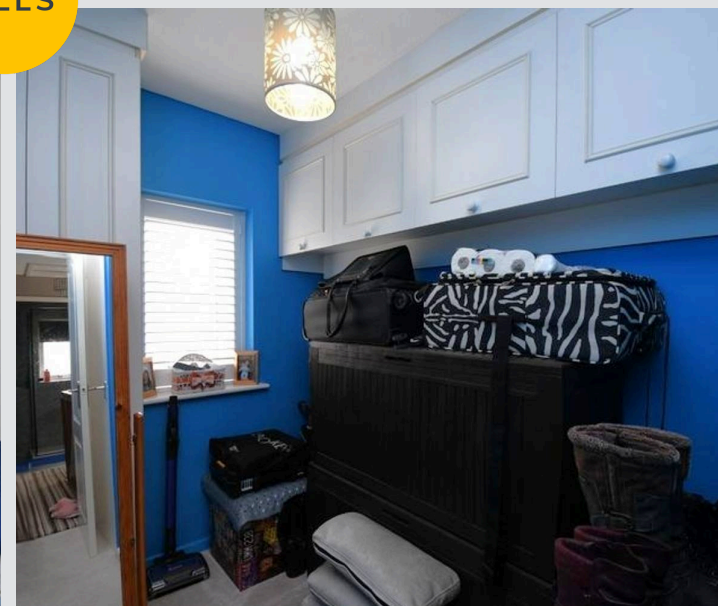
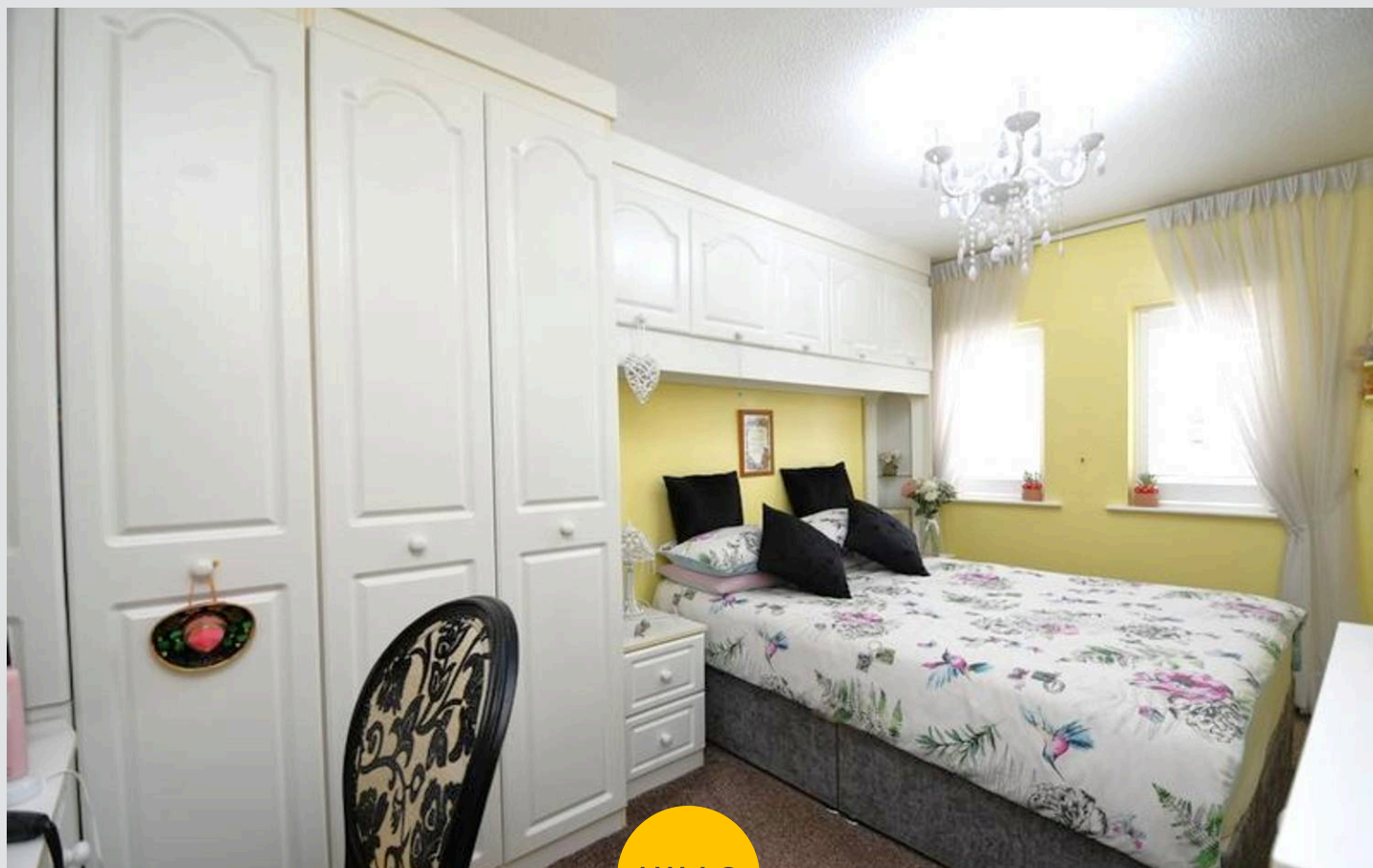
8' 7" x 10' 1" (2.61m x 3.08m)

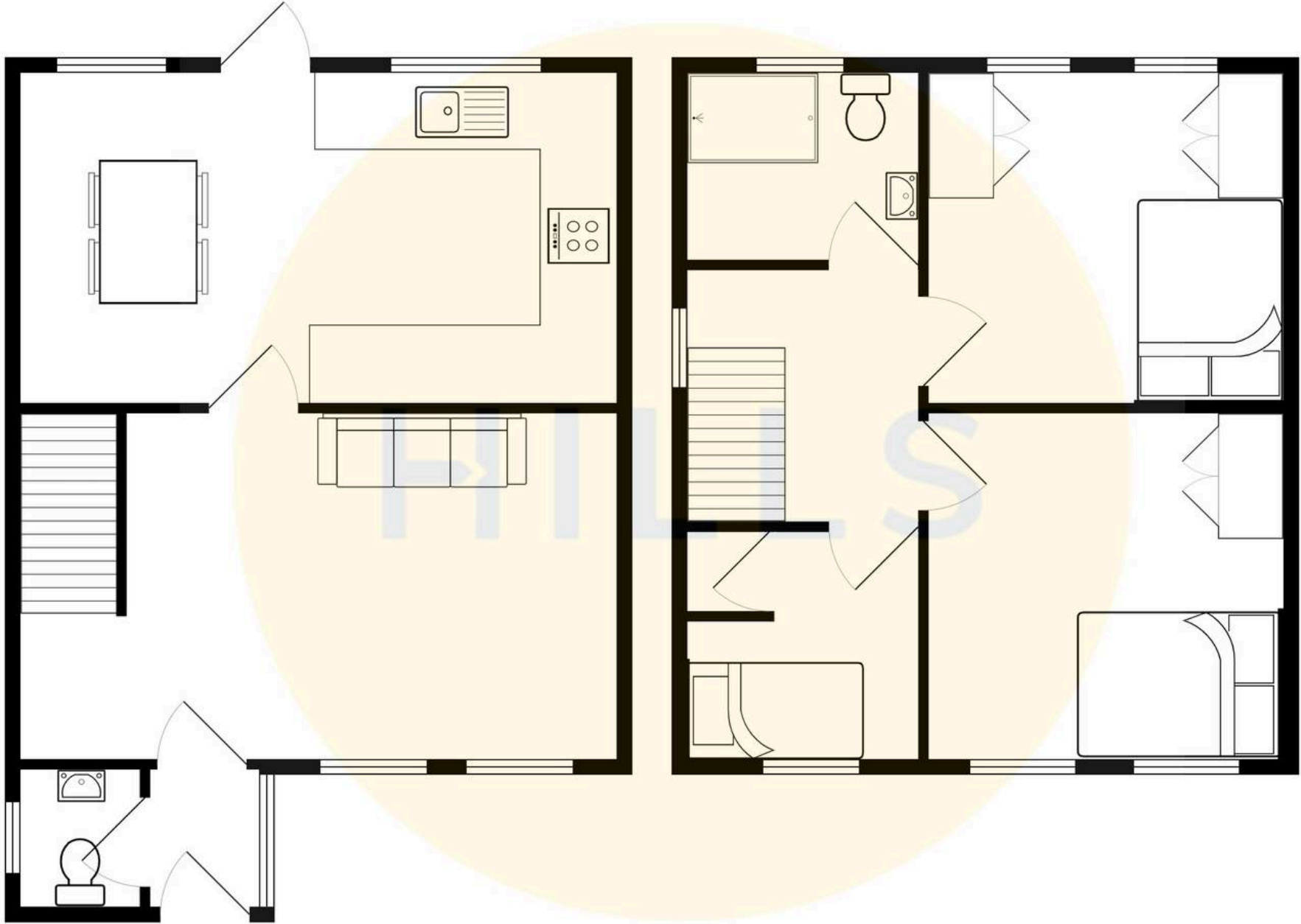
Bedroom Three

10' 10" x 5' 11" (3.31m x 1.81m)

Bathroom

6' 4" x 6' 9" (1.93m x 2.06m)







Hills | Salfords Estate Agent

Hills Residential, Sentinel House Albert Street – M30 0SS

0161 707 4900

sales@hills.agency

www.hills.agency/



By law, we are required to conduct anti-money laundering checks on all potential buyers and sellers. In line with HMRC guidelines, our trusted partner, Coadjute, will securely manage these checks on our behalf. A non-refundable fee of £45 + VAT per person will apply, and Coadjute will handle the payment. Once an offer is accepted, Coadjute will send a secure link for you to complete the biometric checks. These checks must be completed before we can send the memorandum of sale to all parties. PLEASE NOTE: The Agent has not tested any equipment, fixtures, fittings or services so cannot verify that they are in working order or fit for the purpose. References to the properties tenure are based on information supplied by the seller. You are advised to check the availability of this property before travelling any distance to view. Every effort has been made to ensure these particulars are correct and not misleading but their accuracy is not guaranteed nor do they form part of any contract.