



## Brighton Road, KT6

£2,650 Per calendar month

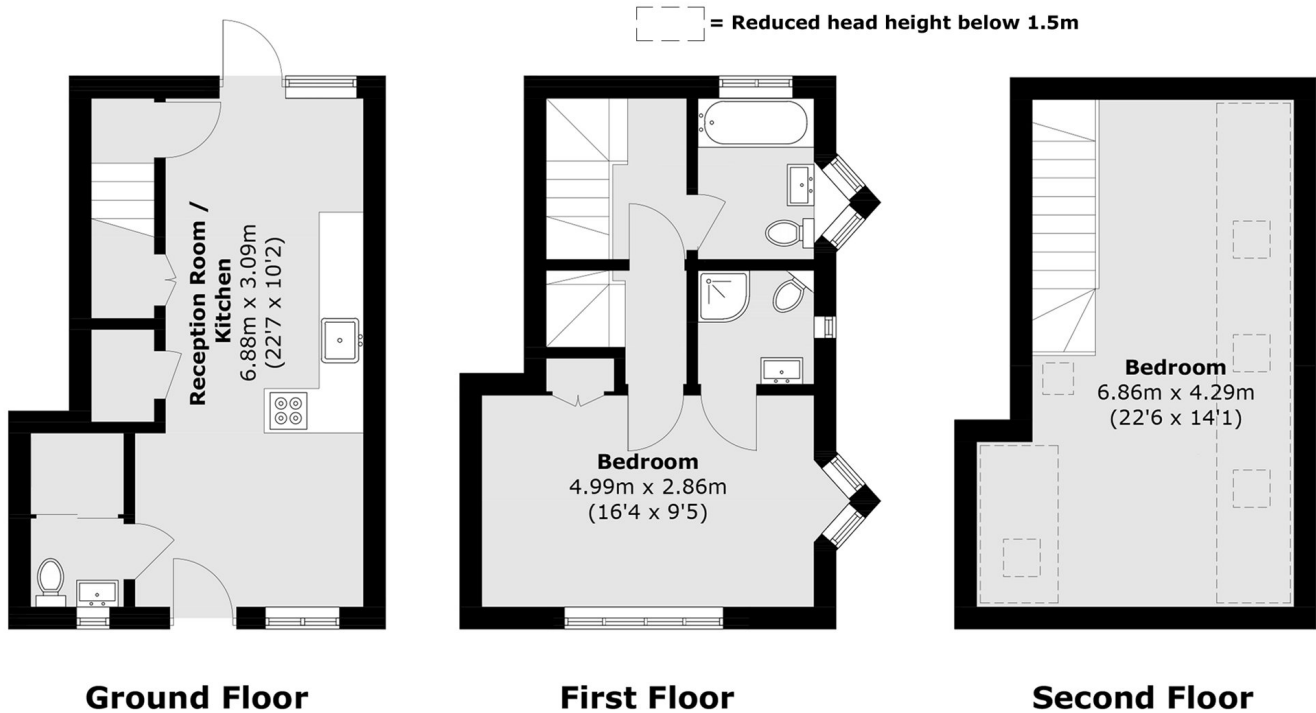
With an open plan reception room, two bedrooms, two bathrooms, separate w/c and a private patio, this newly refurbished house offers plenty of space for you to live comfortably.

Brighton Road is in the heart of Surbiton, off Portsmouth Road which runs along the idyllic River Thames and less than half a mile away from Surbiton train station and high street.

### Features

- Brand New Refurbished
- Two Bedrooms
- Two Bathrooms
- Private Patio
- Open Plan
- Central Location

# Brighton Road, Surbiton, KT6



Total area (approx.): 81.1 sq. m (873.0 sq. ft)