






## NETHERTON GROVE

Chelsea SW10



# AN ELEGANT FIRST FLOOR AND SECOND FLOOR APARTMENT

This well-proportioned split-level home offers generous living space and is arranged over the first and second floors of an attractive period building.

|   |  |  |     |
|---|--|--|-----|
|  |  |  | EPC |
| 2   | 2  | 1  | D   |

Local Authority: Royal Borough of Kensington and Chelsea

Council Tax band: G

Tenure: Leasehold with approximately 979 years remaining

Ground rent: We have not received details surrounding the ground rent. Please make your own enquiries.

Service charge: We have not received details surrounding the service charge. Please make your own enquiries.

**Guide Price: £2,300,000**



## THIS CHARMING APARTMENT IS POSITIONED ON A QUIET RESIDENTIAL CUL-DE-SAC

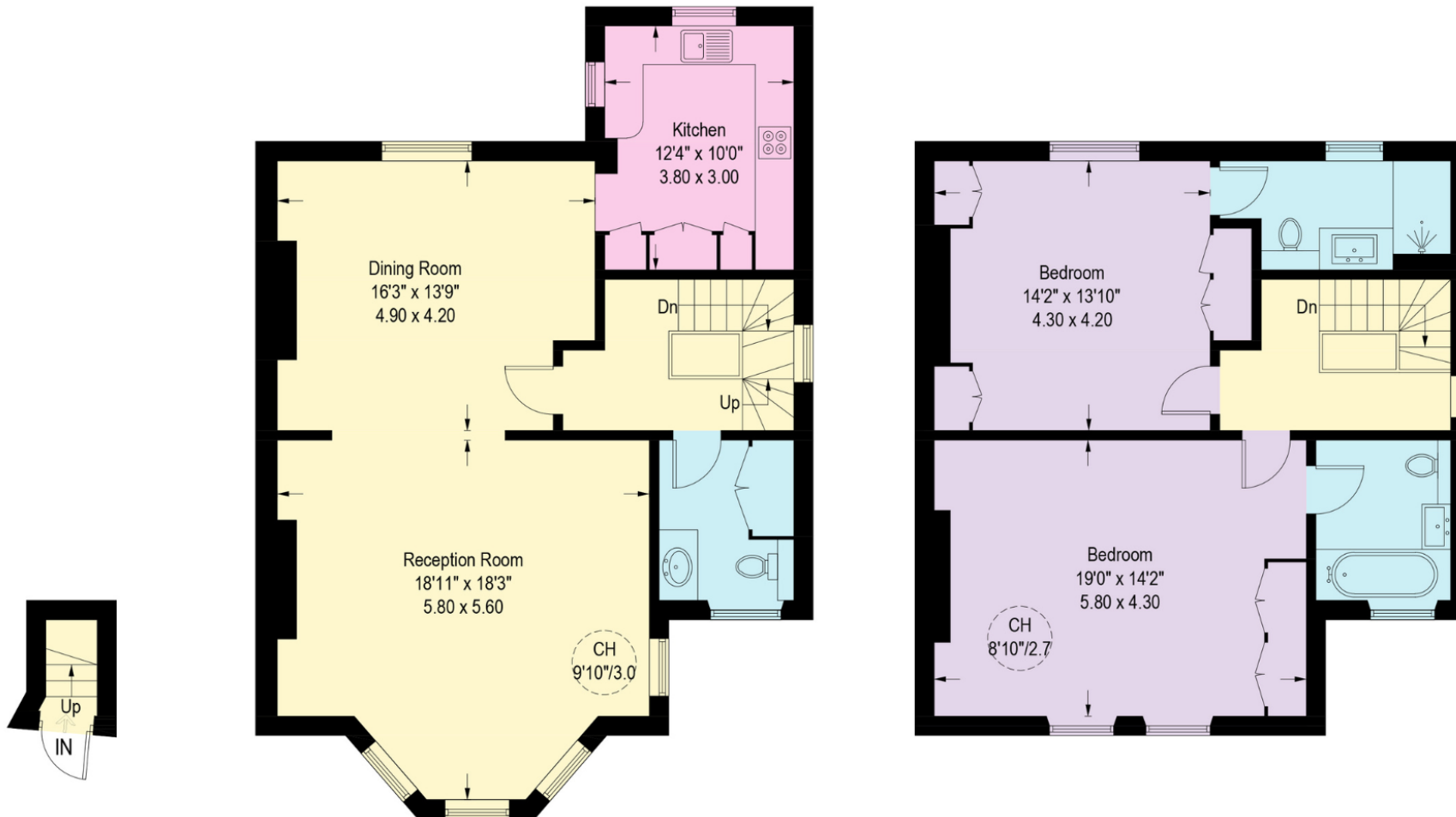
It has an excellent layout, with clear division between living and sleeping accommodations. The first floor features a bright and impressive reception room, centred around a striking bay window and a fireplace. Exceptional ceiling heights of approximately 3m enhance the sense of volume. The reception space connects seamlessly to a substantial dining room, ideal for both everyday living and entertaining. The separate kitchen is positioned just beyond, offering good workspace and storage. A guest WC completes this level. The upper floor comprises two well-sized en-suite bedrooms, both with built-in wardrobes. The expansive principal bedroom has excellent proportions, alongside a second bedroom that is equally versatile for guests or workspace use.

\*Please note, we have not yet received confirmation from the client regarding certain information for this property. You should ensure you make your own enquiries regarding material information about this property.









Upper Ground Floor

First Floor

Second Floor

Netherton Grove, SW10  
Approximate Gross Internal Area = 143 sq m / 1,536 sq ft

This plan is for layout guidance only. Not drawn to scale unless stated. Windows and door openings are approximate. Whilst every care is taken in the preparation of this plan, please check all dimensions, shapes and compass bearings before making any decisions reliant upon them. (ID767266)

We would be delighted  
to tell you more.

**Claire Mengham**

020 3978 2462

claire.mengham@knightfrank.com

**Knight Frank Chelsea and South Kensington**

352a Kings Road

SW3 5UU

[knightfrank.co.uk](https://www.knightfrank.co.uk)

Your partners in property

1. Particulars: These particulars are not an offer or contract, nor part of one. You should not rely on statements given by Knight Frank in the particulars, by word of mouth or in writing ("information") as being factually accurate about the property, its condition or its value. Neither Knight Frank nor any joint agent has any authority to make any representations about the property, and accordingly any information given is entirely without responsibility on the part of Knight Frank. 2. Material Information: Please note that the material information is provided to Knight Frank by third parties and is provided here as a guide only. While Knight Frank has taken steps to verify this information, we advise you to confirm the details of any such material information prior to any offer being submitted. If we are informed of changes to this information by the seller or another third party, we will use reasonable endeavours to update this as soon as practical. 3. Photos, Videos etc: The photographs, property videos and virtual viewings etc. show only certain parts of the property as they appeared at the time they were taken. Areas, measurements and distances given are approximate only. 4. Regulations etc: Any reference to alterations to, or use of, any part of the property does not mean that any necessary planning, building regulations or other consent has been obtained. A buyer must find out by inspection or in other ways that these matters have been properly dealt with and that all information is correct. 5. Fixtures and fittings: A list of the fitted carpets, curtains, light fittings and other items fixed to the property which are included in the sale (or may be available by separate negotiation) will be provided by the Seller's Solicitors. 6. VAT: The VAT position relating to the property may change without notice. 7. To find out how we process Personal Data, please refer to our Group Privacy Statement and other notices at <https://www.knightfrank.com/legals/privacy-statement>.

Particulars dated May 2026. Photographs and videos dated May 2026. All information is correct at the time of going to print. Knight Frank is the trading name of Knight Frank LLP. Knight Frank LLP is a limited liability partnership registered in England and Wales with registered number OC305934. Our registered office is at 55 Baker Street, London W1U 8AN. We use the term 'partner' to refer to a member of Knight Frank LLP, or an employee or consultant. A list of members names of Knight Frank LLP may be inspected at our registered office. If you do not want us to contact you further about our services then please contact us by either calling 020 3544 0692, email to [marketing.help@knightfrank.com](mailto:marketing.help@knightfrank.com) or post to our UK Residential Marketing Manager at our registered office (above) providing your name and address.