



Surrey Square, SE17

£340,000

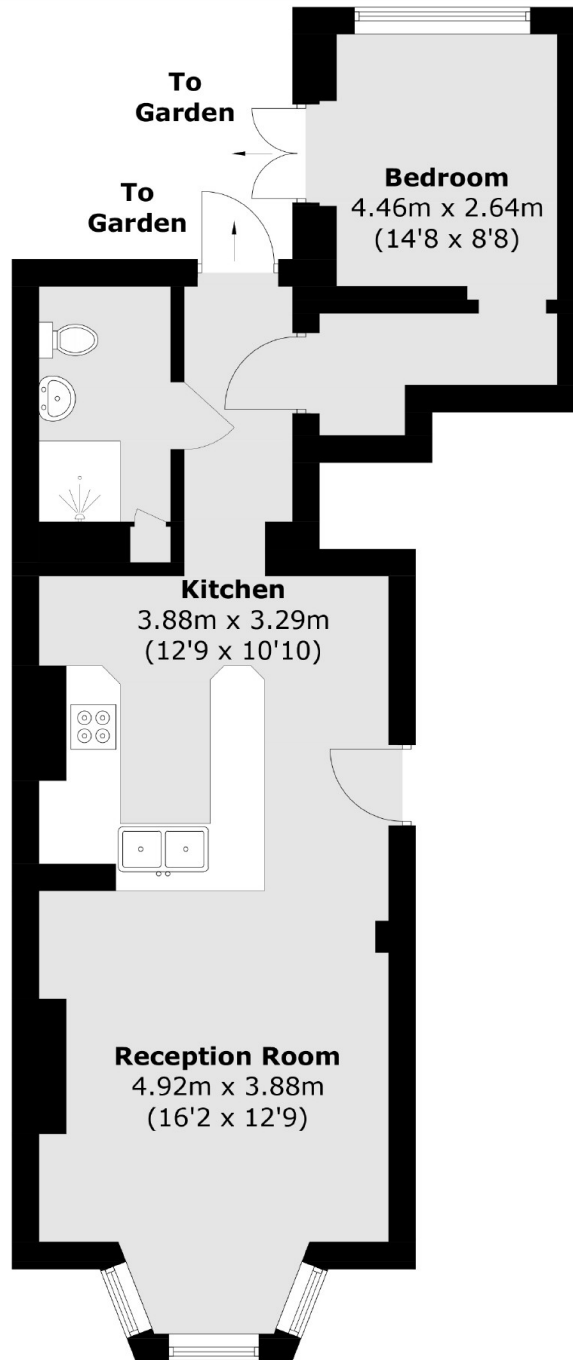
A wonderful one bedroom ground floor garden flat. The open plan reception room and kitchen is flooded with natural light. The bedroom located at the rear with views over the garden. Furthermore there is a shower room and direct access onto a large private rear garden. The property does require some updating, but has wonderful potential for the next buyer to make it their own. Sold with no onward chain.

Surrey Square is a quiet street providing excellent access to the city and beyond with a great selection of transport links close by. The property overlooks a nice park and there a number of cafés, local shops and amenities just a short stroll away including beautiful Burgess Park and vibrant Bermondsey Street

Features

- One Bedroom
- Private Rear Garden
- Open Plan Living
- Great Location
- High Ceilings
- No Onward Chain

Surrey Square,
London, SE17



Total area (approx.): 51.3 sq. m (552.2 sq. ft)