



23 Graham Crescent, Portslade

In Excess of **£350,000**

**MANSELL
McTAGGART**
Trusted since 1947

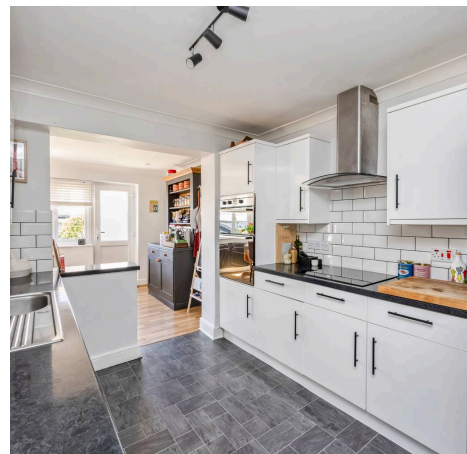
23 Graham Crescent

Portslade, Brighton

Council Tax band: C

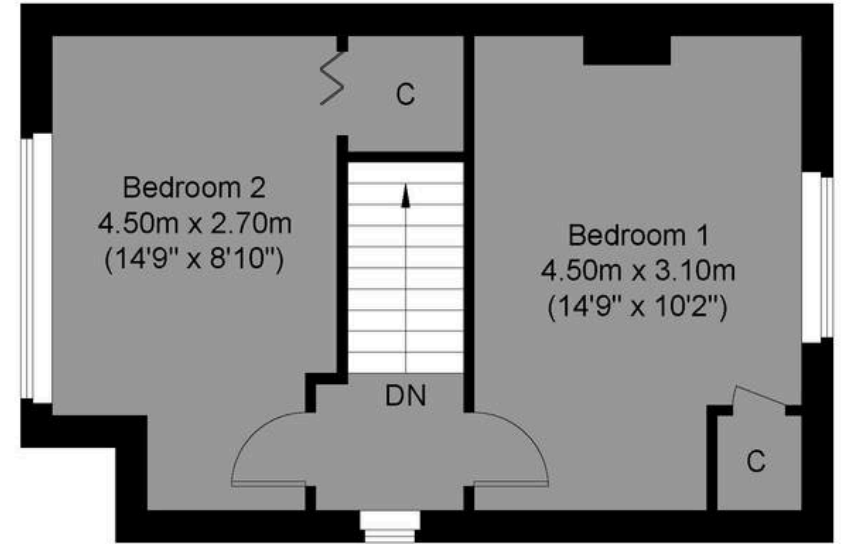
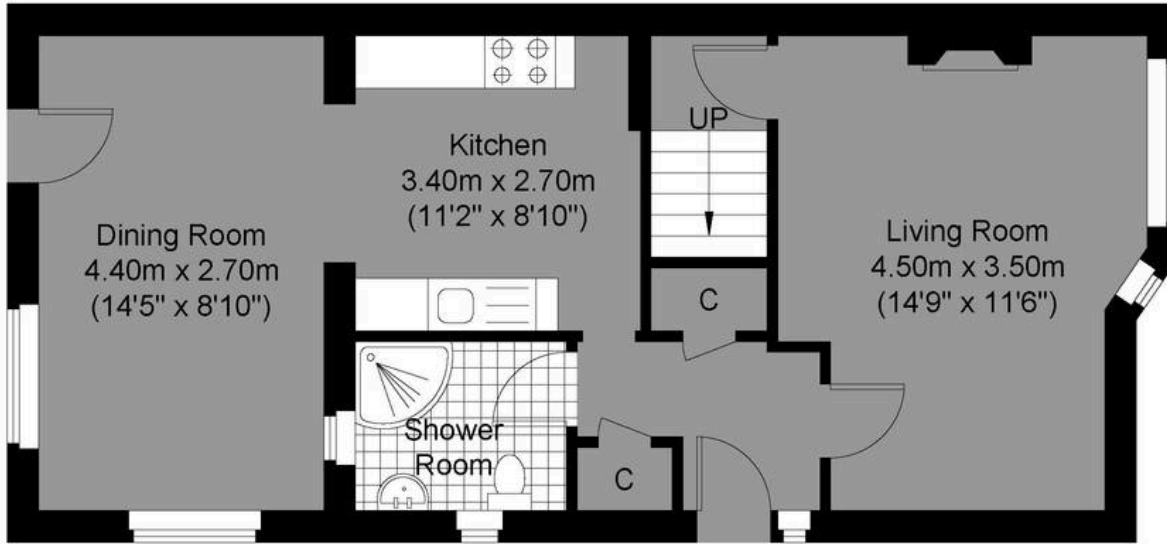
Tenure: Freehold

- Two Bedroom Semi Detached Chalet Bungalow
- Off Road Parking With Side Access To Rear Garden
- Two Double Bedrooms Both With Lots Of Natural Light & Built In Wardrobes
- Bright And Spacious Dining Room With French Doors Leading Out To The Garden
- Lounge Has Bay Window & Feature Fireplace
- Quiet Residential Location With Local Amenities Within Easy Reach
- Contemporary Garden With Large Garden Shed
- Modern Fitted Kitchen & Bathroom Suites
- Exclusive To Mansell McTaggart



Approximate Gross Internal Area= 77.51 sq m / 834.31 sq ft

**MANSELL
McTAGGART**
— Trusted since 1947 —



Graham Crescent

Ground Floor
Approximate Floor Area
499.12 sq ft (46.37 sq m)



First Floor
Approximate Floor Area
335.18 sq ft (31.14 sq m)

Illustration for identification purposed only, measurements are approximate, not to scale.

© Mansell McTaggart



Mansell McTaggart Hove

170 Church Road, Hove - BN3 2DJ

01273 044929

hove@mansellmctaggart.co.uk

www.mansellmctaggart.co.uk/branch/hove/

