



Lock House, St Julian Street, Tenby
Pembrokeshire, SA70 7AS

Telephone; (01834) 842204
Email; sales@birtandco.co.uk

www.birtandco.co.uk



5 Degrees West South Parade
Tenby
SA70 7DF

£245,000

House
Freehold



A 2-bedroom townhouse in a convenient location in Tenby Town Centre. The house has well-appointed rooms, and offers a private courtyard garden that can be accessed via French doors off the lounge.

The property is sold as freehold and with no onward chain. Altogether, it comprises entrance porch, lounge/diner, kitchen, 2 bedrooms, bathroom, hallway with built in storage, and paved courtyard to side.

Situated just opposite the Historic Town Walls, the property is within a couple of minutes' walking distance to local amenities, and the seafront with its iconic harbour view is just 200m away.



Regulated by R.I.C.S. Giles Birt, B.Sc., M.R.I.C.S



- **Tenby Town Centre Location**
 - **Outside Space**
 - **2 Bedrooms**
 - **Close to Amenities**

- **No Onward Chain**
- **Gas Central Heating**
 - **Built in Storage**

[Lounge/Diner 19'7 x 14'4 \(5.97m x 4.37m\)](#)

Spacious L-shaped room with two centre ceiling light points, two central heating radiators, laminate flooring, two timber sash windows and sliding patio door opening to the enclosed courtyard.

[Kitchen 8'9 x 8'8 \(2.67m x 2.64m\)](#)

Fitted kitchen has timber sash window to the side, centre ceiling light point, wall and floor mounted units, stainless steel sink with mixer tap, electric four ring hob with oven under and extractor fan above, space and plumbing for fridge and washing machine.

[Bedroom One 8'1 x 8'9 \(2.46m x 2.67m\)](#)

Double bedroom has timber sash window to the rear, centre ceiling light point and central heating radiator.

[Bedroom Two 11'11 x 11'2 \(3.63m x 3.40m\)](#)

A second double bedroom with two timber sash windows, one to the rear and the other to the side, plus central heating radiator.

[Bathroom 7'10 x 6 \(2.39m x 1.83m\)](#)

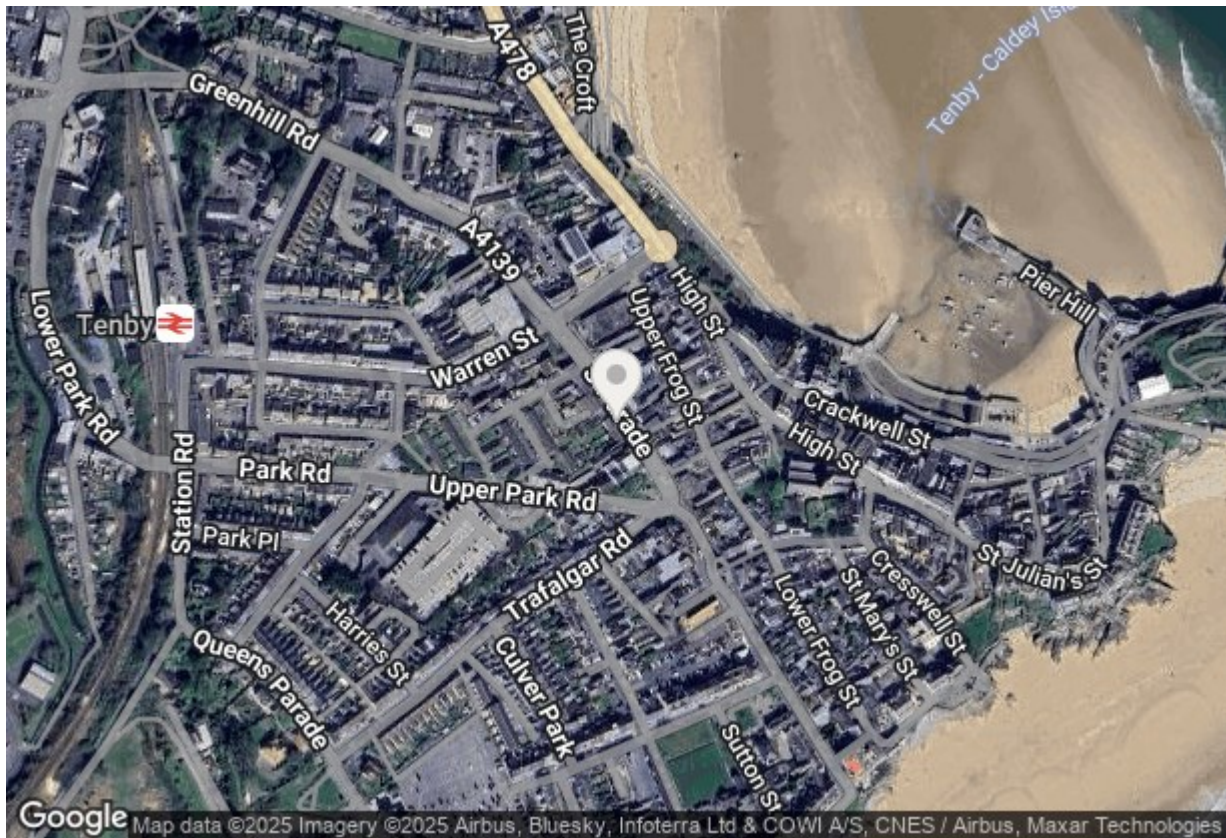
The room has small timber obscure glass window, bath with shower over, wash hand basin, WC, centre ceiling light point and central heating radiator.

[Hallway](#)

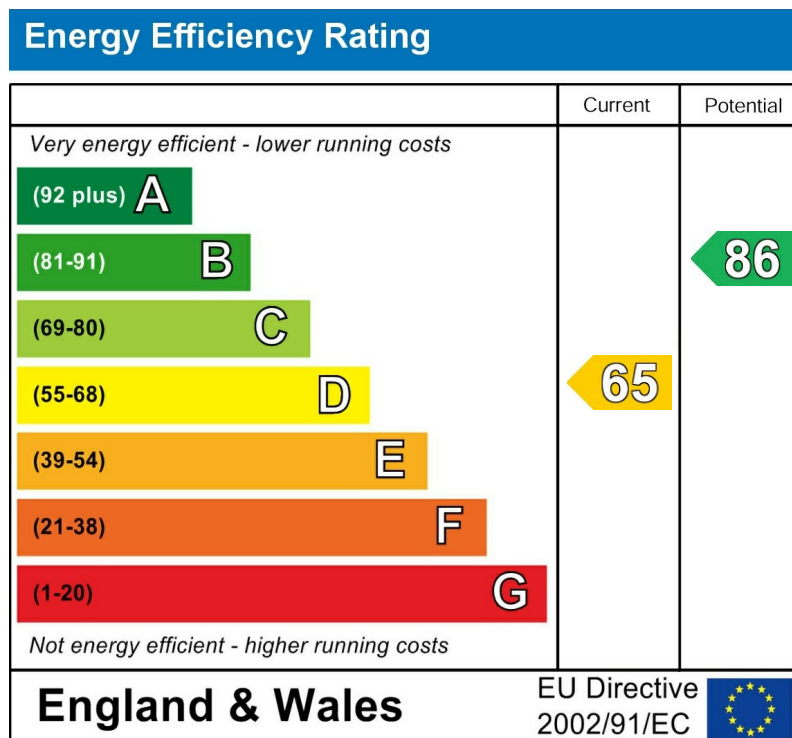
The house is entered through a communal porchway, with front door then opening into the hallway, with stairs leading up to first floor. The landing has a double storage cupboard, timber sash window to the side and centre ceiling light point.

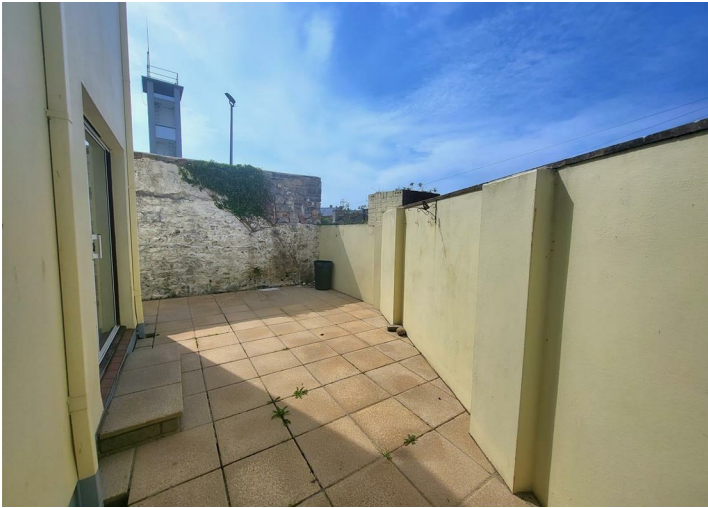
[Courtyard](#)

The sunny paved courtyard is fully enclosed and private, and has a timber pedestrian gate which opens onto Jones Terrace.



From our office head up through Tudor Square along the High Street and turn left at the mini roundabout into White Lion Street. At the junction turn left onto South Parade and the property is located on your right-hand side on Jones Terrace, just before the Fire Station.







Floor Plan



Measurements are approximate. Not to scale. Illustrative purposes only
Made with Metropix ©2025

These particulars, whilst believed to be accurate are set out as a general outline only for guidance and do not constitute any part of an offer or contract. Intending purchasers should not rely on them as statements of representation of fact, but must satisfy themselves by inspection or otherwise as to their accuracy. No person in this firms employment has the authority to make or give any representation or warranty in respect of the property.