



Wapping Wall, London E1W

Offers In Excess Of £850,000 Share of







Description

Located on the third floor, this impressive apartment extends to 1,222 square feet of beautifully proportioned living and entertaining space.

The generous reception room showcases exposed brickwork and cast iron beams, with views overlooking Wapping Wall—a charming cobbled street that retains much of the area's historic dockland character. The reception flows seamlessly into a modern, fully fitted kitchen enjoying the same aspect.

Both bedrooms overlook a tranquil private courtyard. The principal bedroom is particularly spacious, incorporating a dressing area, fitted wardrobes, and an en-suite shower room. The well-proportioned second bedroom offers excellent built-in storage and ample space to accommodate a study area alongside comfortable guest accommodation. A family bathroom and separate airing and storage cupboards are conveniently positioned off the welcoming entrance hallway, which features double doors that open dramatically into the impressive reception room.

Merchant Court is a picturesque warehouse conversion set on the Banks of The River Thames and adjacent The Thames River Path, equidistant to both Canary Wharf and The City. The building offers secure underground car parking, daytime porter, and has access to a glorious South facing communal Riverside terrace with views towards Canary Wharf.

- 999 year from 1st July 1997
- Large two bedroom apartment
- Warehouse features throughout
- 1222 sqft
- Spacious principal bedroom
- Secure allocated parking
- Communal Riverside terrace
- Lift
- Porter
- EPC: C

Floorplan

1,222 sq ft | 114 sq m

Merchant Court, E1

Approximate Gross Internal Area = 113.5 sq m / 1222 sq ft

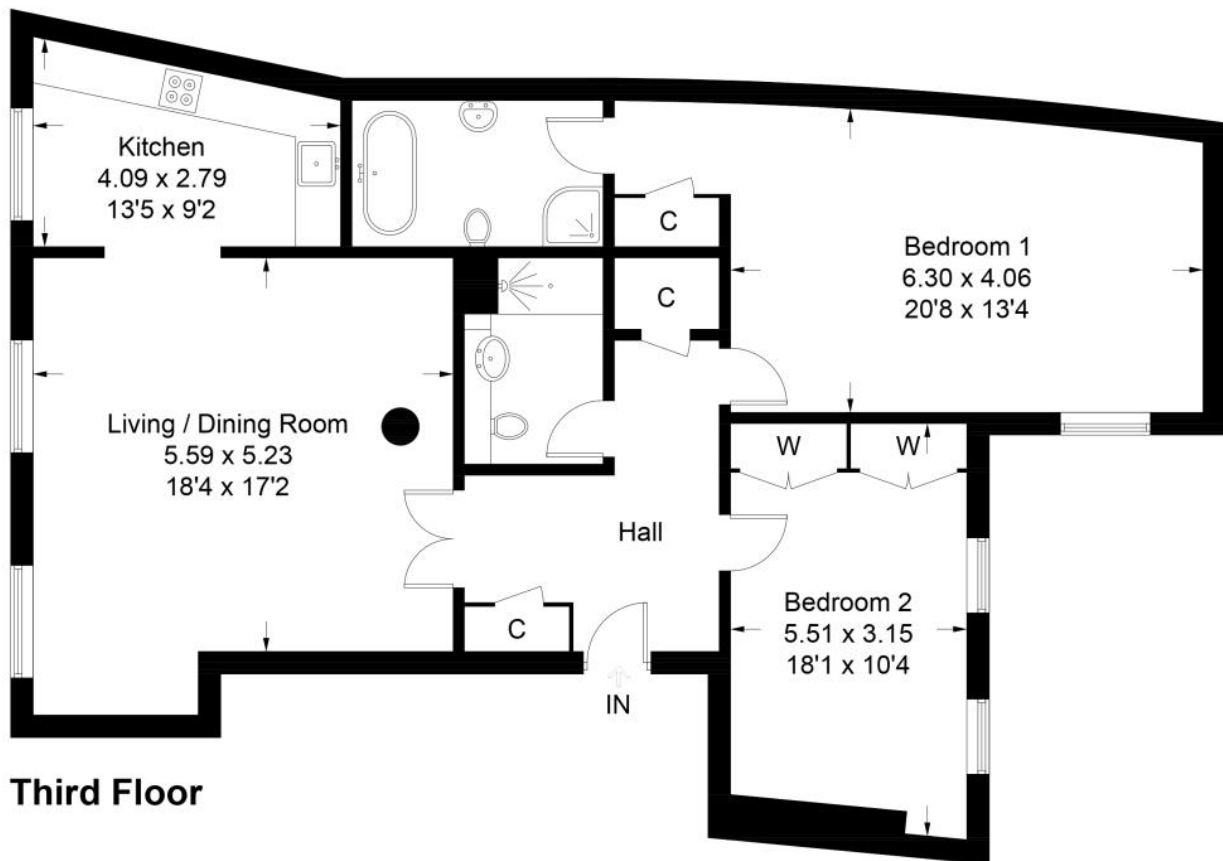


Illustration for identification purposes only, measurements are approximate, not to scale. Fourlabs.co © (ID1293794)

City
25 Walbrook The Walbrook
Building,
London EC4N 8AF
+4420 7337 4000

Urban living, your way.

jll.co.uk/residential

© 2019 Jones Lang LaSalle IP, Inc. All rights reserved. All information contained herein is from sources deemed reliable; however, no representation or warranty is made to the accuracy thereof.

