

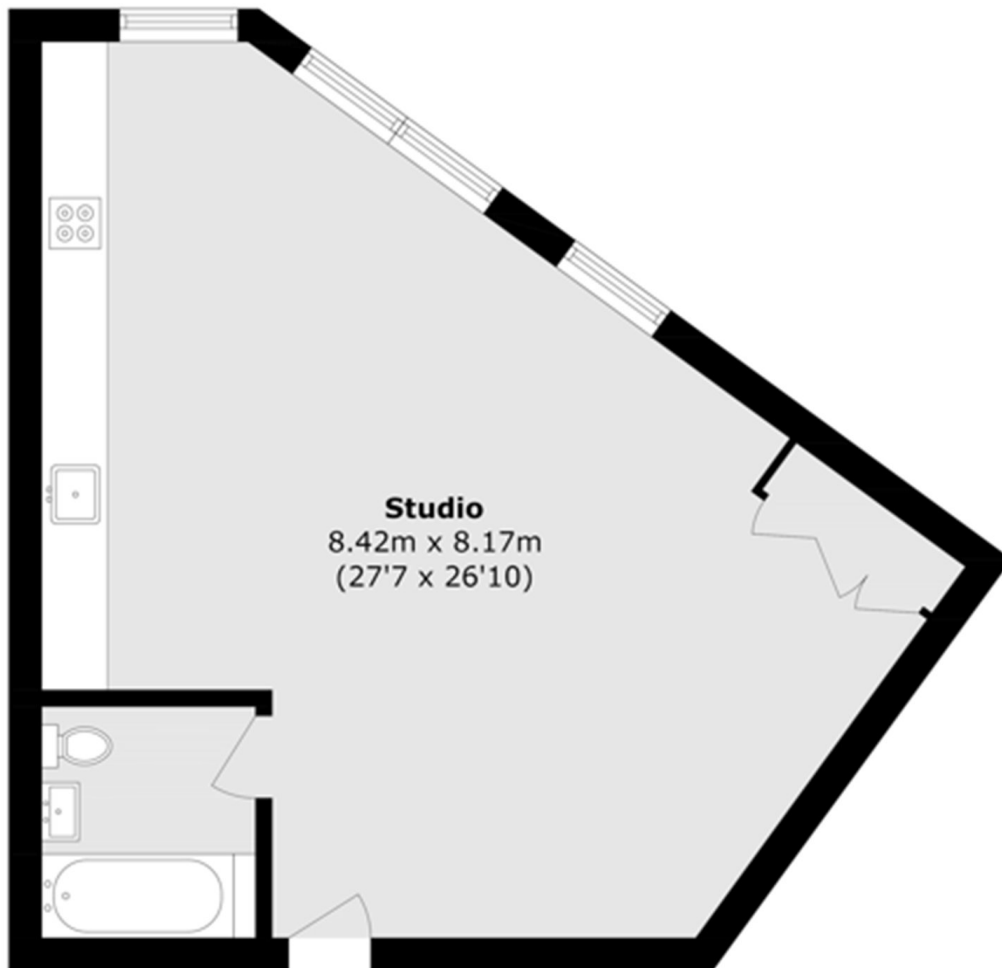


ADMIRALTY AVENUE, E16

£290,000

A spacious studio apartment located in Royal Wharf. This property offers a modern and bright living space, a kitchen with built in appliances, a contemporary bathroom, and several high end amenities included in the development. There are also on-site restaurants and coffee shops.

- 24h Concierge
- Gym and Swimming Pool
- Service Charge: £3,214
- Ground Rent: £360



Sixth Floor

Total area (approx): 48.9 sq. m (526.3 sq. ft)

LiFE RESIDENTIAL

36 Millharbour, London, E14

9JS

Sales: 020 3668 1033

Lettings: 020 3668 1030

Energy Rating: . We aim to make our particulars both accurate and reliable. However they are not guaranteed; nor do they form part of an offer or contract. If you require clarification on any points then please contact us, especially if you're traveling some distance to view. Please note that appliances and heating systems have not been tested and therefore no warranties can be given as to their good working order.