



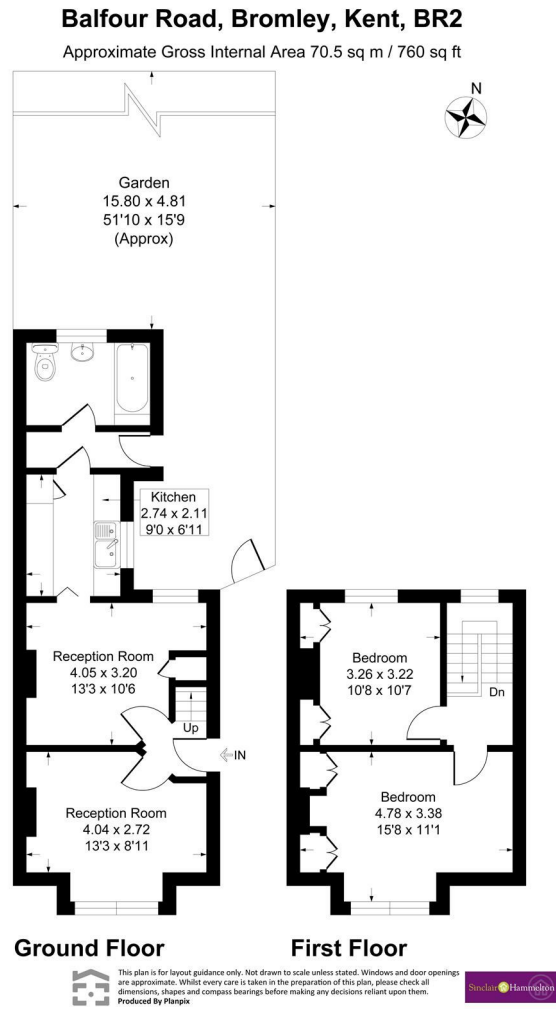
ASKING PRICE

**£425,000**

**Balfour Road**

, BR2 9SJ

EPC RATING: D COUNCIL TAX BAND: D



2

1

2



| Energy Efficiency Rating                    |  | Current                 | Potential |
|---|--|-------------------------|-----------|
| Very energy efficient - lower running costs |  |                         |           |
| (92 plus) <b>A</b>                          |  |                         |           |
| (81-91) <b>B</b>                            |  |                         |           |
| (69-80) <b>C</b>                            |  |                         |           |
| (55-68) <b>D</b>                            |  | 59                      | 73        |
| (39-54) <b>E</b>                            |  |                         |           |
| (21-38) <b>F</b>                            |  |                         |           |
| (1-20) <b>G</b>                             |  |                         |           |
| Not energy efficient - higher running costs |  |                         |           |
| <b>England &amp; Wales</b>                  |  | EU Directive 2002/91/EC |           |

Agents Note: Whilst every care has been taken to prepare these particulars, they are for guidance purposes only. All measurements are approximate and are for general guidance purposes only and whilst every care has been taken to ensure their accuracy, they should not be relied upon and potential buyers/tenants are advised to recheck the measurements



**OFFICE ADDRESS**  
 23 High Street  
 Bromley  
 Kent  
 BR1 1LG

**OFFICE DETAILS**  
 0208 464 5566  
 info@sinclairhammelton.co.uk