



Flat (EPC Rating: D)

QUEEN'S CLUB GARDENS LONDON, W14 9TH

Per month

£3,750 Per

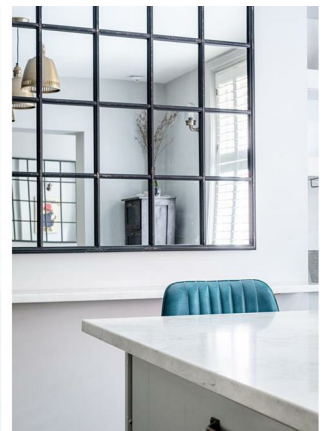
ALEXANDER STEER
Estate Agents

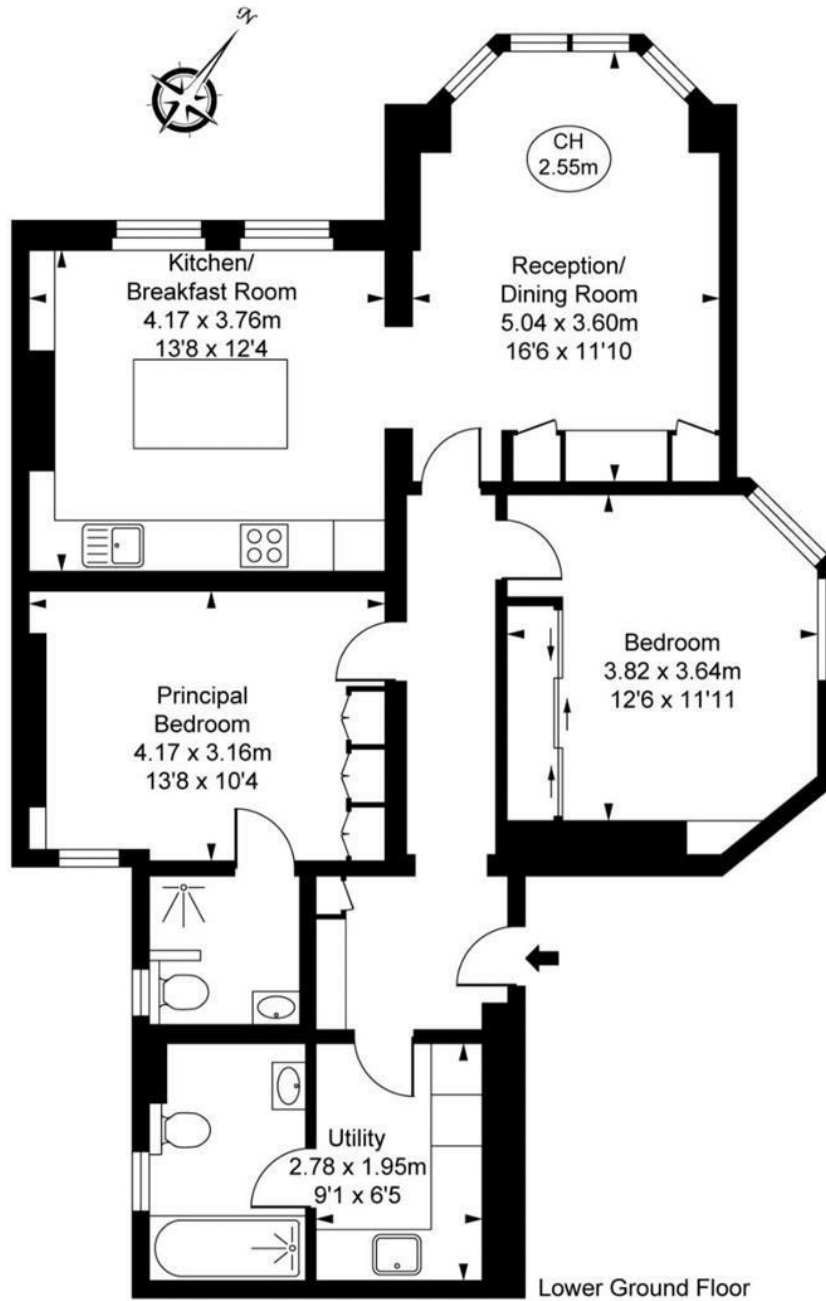


2 BEDROOM FLAT LOCATED IN LONDON

Situated within the highly sought-after Queen's Club Gardens, this beautifully presented two-bedroom, two-bathroom lower ground floor apartment combines elegant period charm with stylish contemporary interiors. The principal bedroom benefits from excellent proportions and a luxurious en-suite bathroom, while the second bedroom is equally well-sized and served by a modern family bathroom.

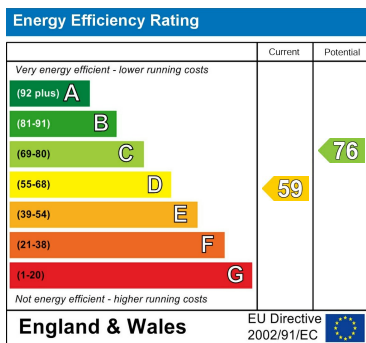
Unwin Mansions is ideally located in the heart of West Kensington, moments from the renowned Queen's Club and within easy reach of the amenities, cafés and restaurants of Barons Court, West Kensington and Fulham. Excellent transport links are provided by Barons Court and West Kensington Underground stations (District and Piccadilly lines), offering convenient access into Central London, Heathrow Airport and beyond. The area is also well positioned for access to Kensington High Street, Hammersmith and the green open spaces of Holland Park.



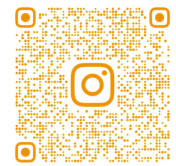


Council Tax Band

Energy Performance Graph



Call us on
0203 822 0111
hello@alexandersteer.co.uk
alexandersteer.co.uk



©ALEXANDERSTEERPROPERTY

Agents Note: Whilst every care has been taken to prepare these particulars, they are for guidance purposes only. All measurements are approximate and are for general guidance purposes only and whilst every care has been taken to ensure their accuracy, they should not be relied upon and potential buyers are advised to recheck the measurements.