



Connells

Briars Wood
Hatfield



Property Description

Situated in a popular area of Hatfield, this beautifully renovated and extended four-bedroom end-of-terrace home offers spacious, modern living ideal for families and professionals alike.

The property has been thoughtfully upgraded throughout, featuring a stunning rear extension that creates a large open-plan living, kitchen and dining space-perfect for both everyday living and entertaining.

The contemporary kitchen is complemented by ample natural light and seamless access to the private rear garden.

The home boasts four well-proportioned double bedrooms, en suite, alongside a stylish family bathroom finished to a high standard.

Externally, the property benefits from a private rear garden complete with a versatile summerhouse/outbuilding, ideal for use as a home office, gym, or additional living space. The property also comes with off-road parking for two vehicles.

Conveniently located just 0.6 miles from The Galleria and 0.8 miles from the University of Hertfordshire, the property also offers excellent access to local amenities, transport links and green spaces.

This is a superb opportunity to acquire a turnkey family home in a popular residential location.



Lounge

12' x 12' (3.66m x 3.66m)

Kitchen Diner

23' x 21' (7.01m x 6.40m)

Bedroom One

13' 3" x 11' 10" (4.04m x 3.61m)

Bedroom Two

10' x 12' (3.05m x 3.66m)

Bedroom Three

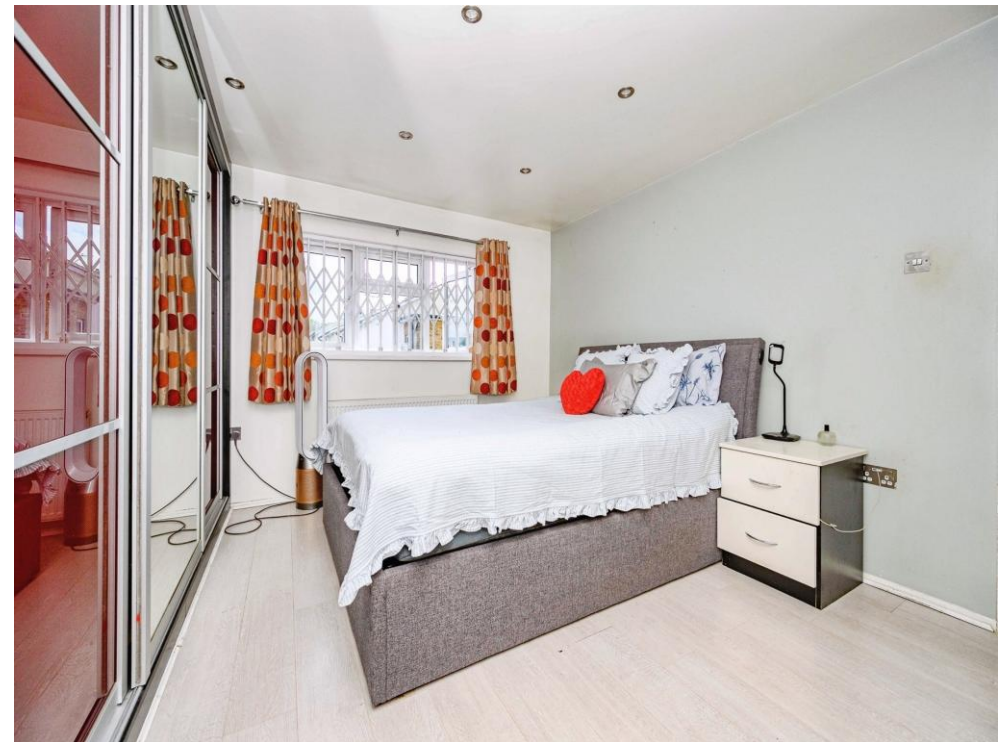
8' 7" x 11' 10" (2.62m x 3.61m)

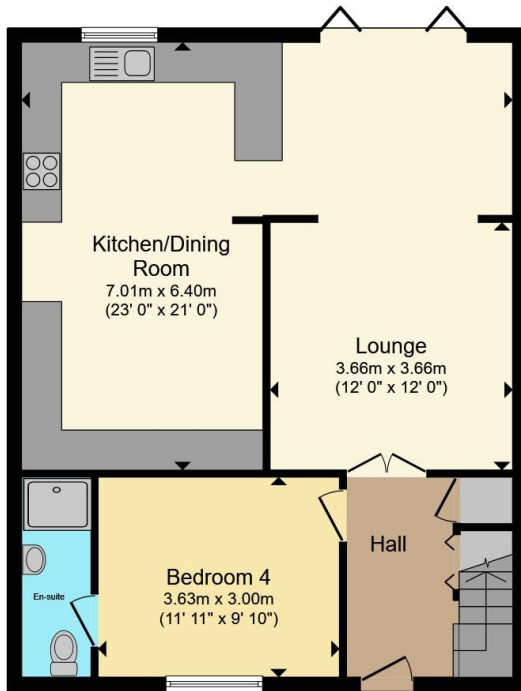
Bedroom Four

9' 10" x 11' 11" (3.00m x 3.63m)

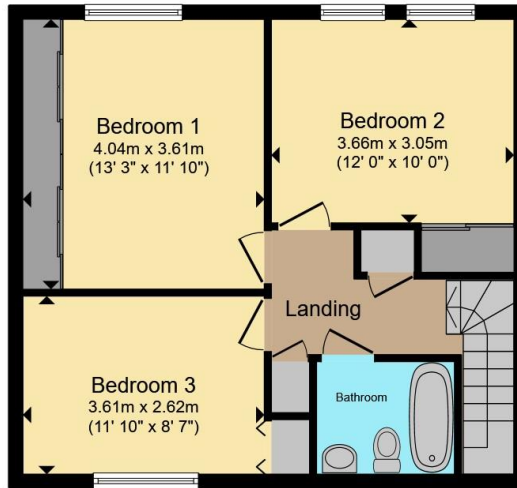
Bathroom

En Suite





Ground Floor



First Floor

Total floor area 119.5 m² (1,287 sq.ft.) approx

This floor plan is for illustrative purposes only. It is not drawn to scale. Any measurements, floor areas (including any total floor area), openings and orientation are approximate. No details are guaranteed, they cannot be relied upon for any purpose and they do not form part of any agreement. No liability is taken for any error, omission or misstatement. A party must rely upon its own inspection(s). Powered by www.propertybox.io



To view this property please contact Connells on

T 01727 851 100
E marshalswick@connells.co.uk

5 Wycombe Place The Quadrant Marshalswick
 ST ALBANS AL4 9RH

EPC Rating: C Council Tax
 Band: C

view this property online connells.co.uk/Property/MWK306258

Tenure: Freehold



1. MONEY LAUNDERING REGULATIONS Intending purchasers will be asked to produce identification documentation at a later stage and we would ask for your co-operation in order that there will be no delay in agreeing the sale. 2. These particulars do not constitute part or all of an offer or contract. 3. The measurements indicated are supplied for guidance only and as such must be considered incorrect. Potential buyers are advised to recheck measurements before committing to any expense. 4. We have not tested any apparatus, equipment, fixtures, fittings or services and it is in the buyers interest to check the working condition of any appliances.

Connells Residential is registered in England and Wales under company number 1489613, Registered Office is Cumbria House, 16-20 Hockliffe Street, Leighton Buzzard, Bedfordshire, LU7 1GN. VAT Registration Number is 500 2481 05.

See all our properties at www.connells.co.uk | www.rightmove.co.uk | www.zoopla.co.uk

Property Ref: MWK306258 - 0004