

# An Teallach, Ormiscaig, Aultbea

Achnasheen, IV22 2JJ



**Offers Over £220,000**





## Overview

- Charming detached 3 bedroom bungalow
- Peaceful location with fabulous views of Torridon mountains
- Open plan kitchen/dining/lounge, 3 bedrooms, stylish bathroom
- Ideal holiday home or those looking for a change of lifestyle
- Easily Maintained Gardens with Polycrub, drive with parking
- EPC band D



## Description

An Teallach is a charming detached bungalow set on the edge of Loch Ewe, offering panoramic views across the loch to the Torridon Mountain range. This is the perfect opportunity for those looking for a change of lifestyle for a peaceful and slower pace of life. The property combines modern comfort with easy-flow living featuring an open plan kitchen, dining area and lounge area. The kitchen area has been fitted with ample storage units and work top space, appliances include a ceramic hob, electric oven and extractor hood, with space and plumbing for a fridge/freezer and washing machine. The dining area has a table and 4 chairs, taking full advantage of the views. The cosy lounge area makes the most of the spectacular views, with triple windows on dual aspects, and a feature multi-fuel stove. There are three well-proportioned bedrooms; 2 double bedrooms, 1 single bedroom and the stylish family bathroom completes the accommodation. There is double glazing throughout and oil central heating.

The garden grounds are mainly to the front of the property with a Polycrub offering self-sufficiency potential. There is a driveway with parking area and timber sheds for additional storage. This is an ideal home for those seeking tranquillity and a scenic retreat.



## Room Dimensions

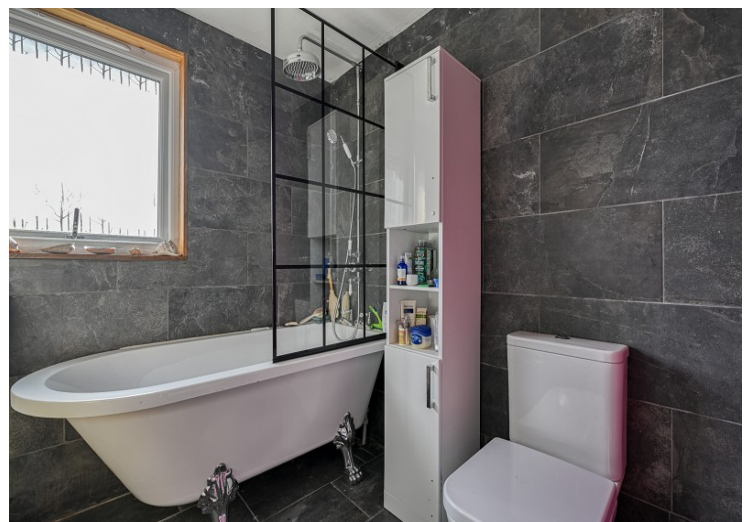
Lounge/Kitchen/Dining Room (22' 9" x 15' 8") or (6.93m x 4.77m)

Bedroom 1 (10' 2" x 9' 9") or (3.10m x 2.98m)

Bedroom 2 (9' 9" x 7' 3") or (2.96m x 2.20m)

Bedroom 3 (9' 7" x 7' 3") or (2.93m x 2.20m)

Bathroom (6' 9" x 6' 6") or (2.05m x 1.98m)





**Extras**

All fitted floor coverings, fixtures and fittings, including all light fittings. Curtain poles and window blinds. Integrated appliances include the ceramic hob, electric oven and extractor. Garden shed. Polycrub.

**Services**

Mains electricity, water and drainage. Telephone and fibre broadband.

**Tenure**

Freehold

**Council tax**

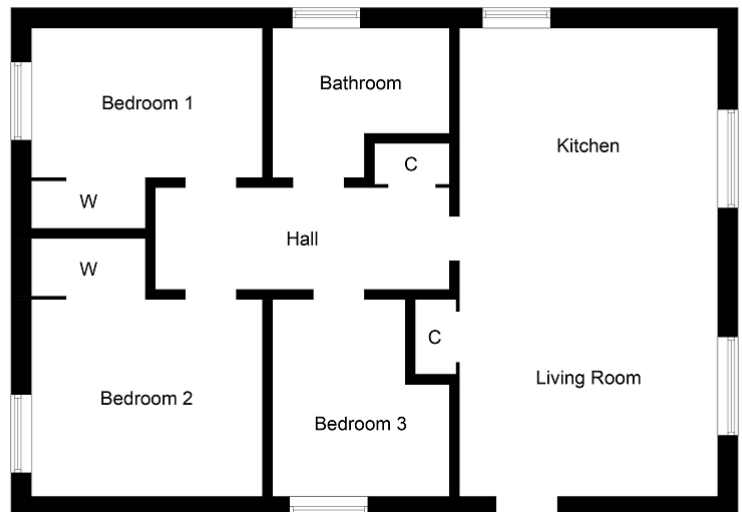
Band C

**Entry**

By mutual agreement

**Viewing**

Strictly By Appointment Only



**Tel: 01463 233218**

The Greenhouse, Beechwood Business Park, Inverness. IV2 3BL

info@tailormademoves.co.uk

www.tailormademoves.co.uk



Under the Property Misdescription Act 1991 we endeavour to make our sales details accurate and reliable but they should not be relied upon as statements or representations of fact and they do not constitute any part of an offer of contract. The seller does not make any representations to give any warranty in relation to the property and we have no authority to do so on behalf of the seller. Services, fittings and equipment referred to in the sales details have not been tested (unless otherwise stated) and no warranty can be given as to their condition. We strongly recommend that all the information which we provide about the property is verified by yourself or your advisers. Under the Estate Agency Act 1991 you will be required to give us financial information in order to verify your financial position before we can recommend any offer to the vendor. A sonic tape measure has been used to measure this property and therefore the dimensions given are for general guidance only. Please note that the floor plans are indicative only and are not to scale.