



Park Road, Camberley

£2,195 PCM



Squires Court, Park Road, Camberley

Modern three storey townhouse with flexible accommodation, private garden opening onto larger communal garden area and 2 allocated parking spaces. Rent includes a gardener.

FEATURES

- Easy access to Camberley town centre
- Gas central heating
- Double glazing
- EV charger

ACCOMODATION

- Entrance hall
- Living room
- Kitchen/dining room
- Master bedroom with en suite shower
- Three further bedrooms
- Family bathroom

OUTSIDE

- Enclosed rear garden opening onto larger communal gardens
- Two allocated parking spaces

AVAILABLE

Immediately

FURNISHED/UNFURNISHED

Unfurnished

DEPOSIT PAYABLE

£2,530

COUNCIL TAX

Surrey Heath – Band E

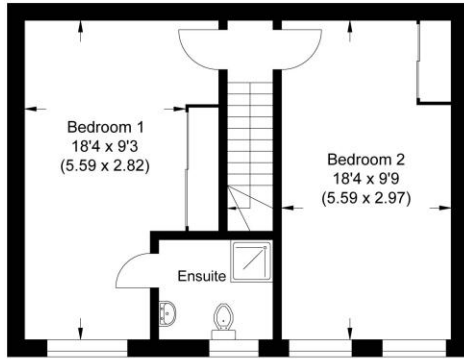
EPC RATING

C

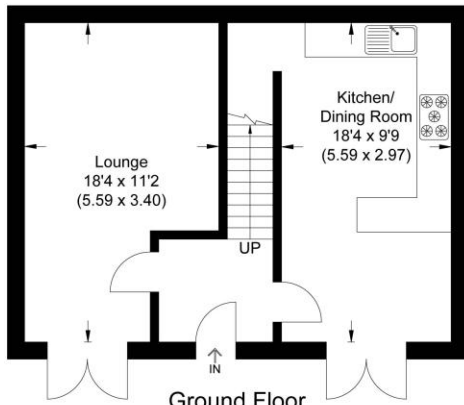




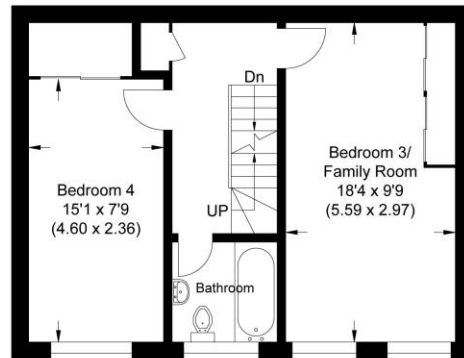
Approximate Gross Internal Area
121.50 sq m / 1307.81 sq ft



Second Floor



Ground Floor



First Floor

Illustration for identification purposes only, measurements are approximate, not to scale.

Disclaimer: We wish to inform prospective tenants that we have prepared these sales particulars as a general guide. We have not carried out a detailed survey, nor tested the services, appliances and specific fittings. Room sizes are approximate and rounded: they are taken between internal wall surfaces and therefore include cupboards / shelves, etc. .

Postcode for sat nav: GU15 2SP



The Old Dairy, 7 Updown Hill, Windlesham, Surrey GU20 6AF
enquiries@newtonrowe.co.uk | 01276 986900