



The Knole, SE9

£2,800 PCM

A modern three bedroom terraced house with a private garden and parking. Available now.

Features

Three bedrooms
En Suite
Bathroom
Private Garden
Driveway
Breakfast Bar

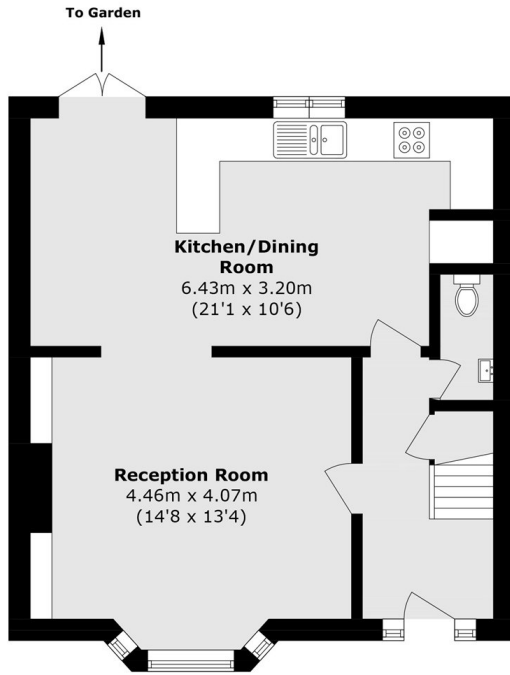


The Knole, SE9

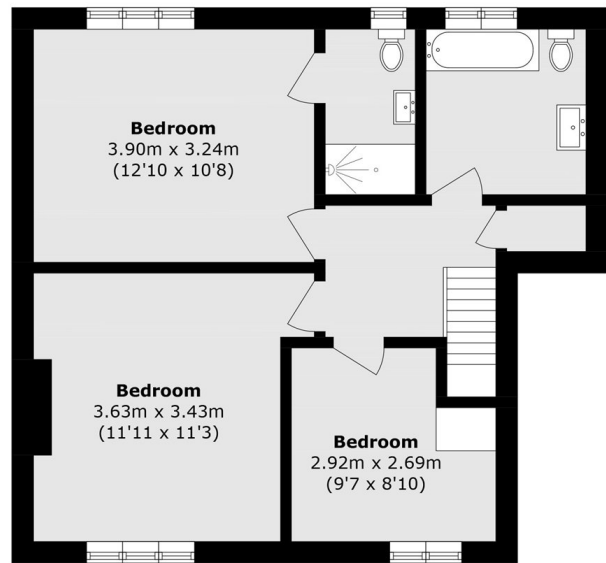
A modern three bedroom terraced house with a private garden and parking. Available now.



The Knole, London, SE9



Ground Floor



First Floor

Total area (approx.): 95.0 sq. m (1022.5 sq. ft)