

## **Landmark Pinnacle, 10 Marsh Wall, London, E14 9GU**

**£590 Per Week**

AMAZING RIVER VIEWS FROM THIS WEST FACING STUDIO SUITE IN LANDMARK PINNACLE LOCATED IN THE HEART OF CANARY WHARF

LANDMARK PINNACLE IS ONE OF LONDON'S TALLEST RESIDENTIAL BUILDINGS AND ENJOYS FACILITIES & VIEWS FROM ITS 56TH FLOOR GYM & 75TH FLOOR ROOF GARDEN

The 440+ square feet of accommodation includes a spacious studio suite with open plan luxury kitchen, floor to ceiling windows over the Thames and beyond. The bedroom area has ample built in storage and there is a luxury bathroom and further storage space.

COMES FURNISHED.

PROPERTY AVAILABLE FROM 16.04.2026

- FURNISHED
- 444 SQ FOOT
- CINEMA & MEDIA ROOMS
- CENTRE OF CANARY WHARF
- AVAILABLE FROM 16.04.2026
- WEST FACING
- 56TH FLOOR GYM & LOUNGES
- 12TH FLOOR SUITE
- AMAZING RIVER VIEWS
- 75TH FLOOR ROOF GARDEN



## Landmark Pinnacle, 10 Marsh Wall, London, E14 9GU



56TH FLOOR GYM (CGI)



75TH FLOOR GARDENS



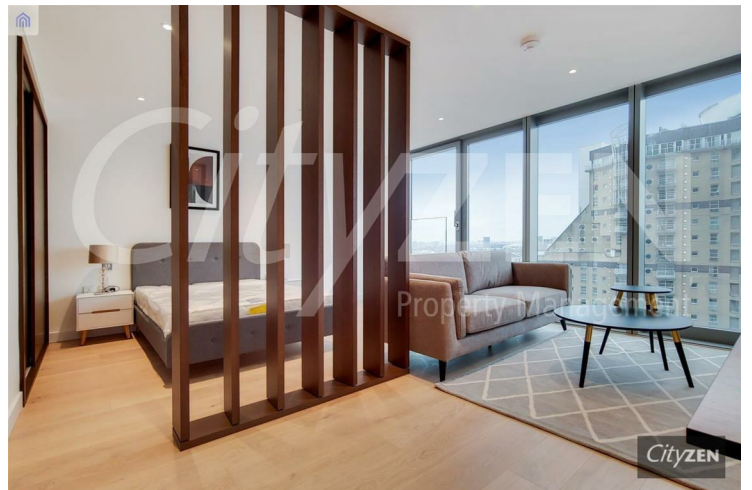
RESIDENTS LOUNGE & DINING AREAS



75TH FLOOR GARDENS



RESIDENTS LOUNGE & DINING AREAS



STUDIO SUITE



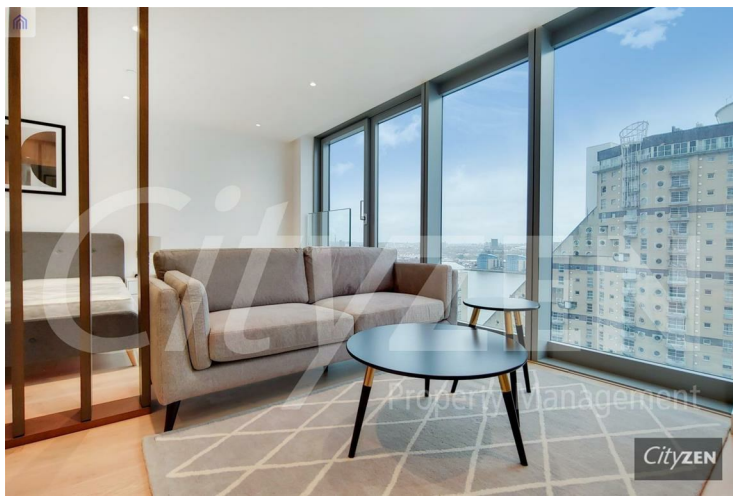
## Landmark Pinnacle, 10 Marsh Wall, London, E14 9GU



STUDIO SUITE



STUDIO SUITE



STUDIO SUITE



SHOWER ROOM



STUDIO SUITE



VIEW FROM APARTMENT



## Landmark Pinnacle, 10 Marsh Wall, London, E14 9GU



LANDMARK PINNACLE



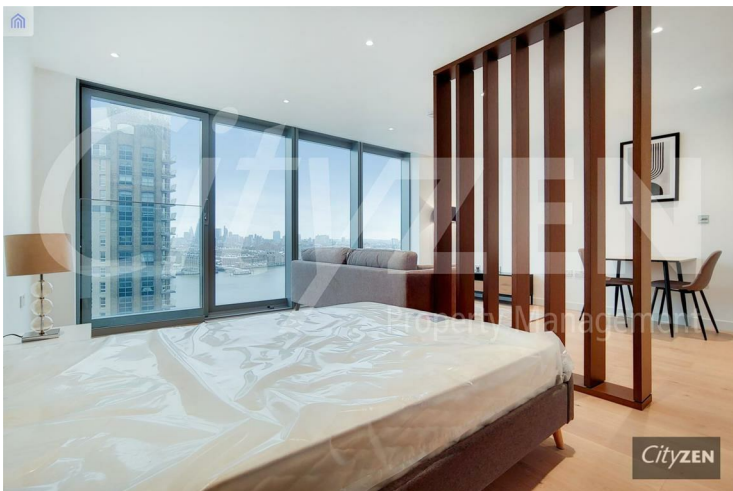
STUDIO SUITE



STUDIO SUITE

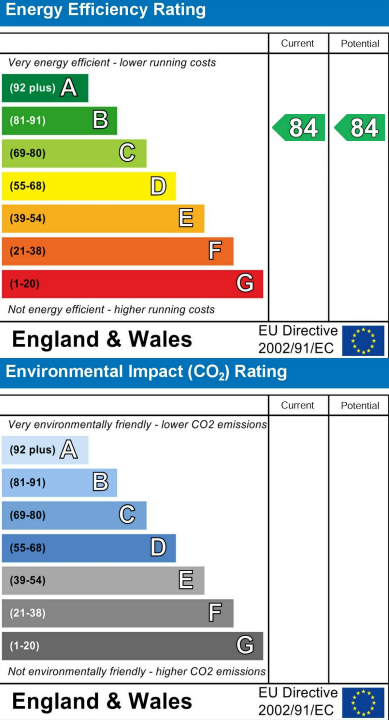
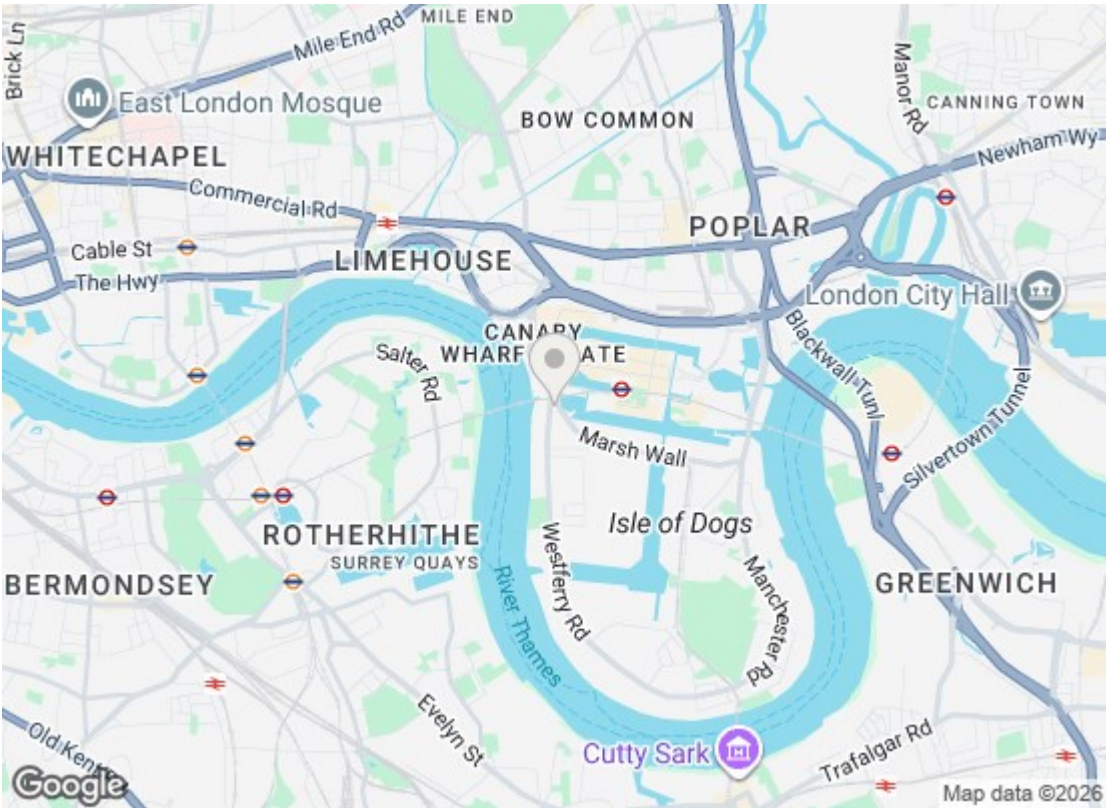
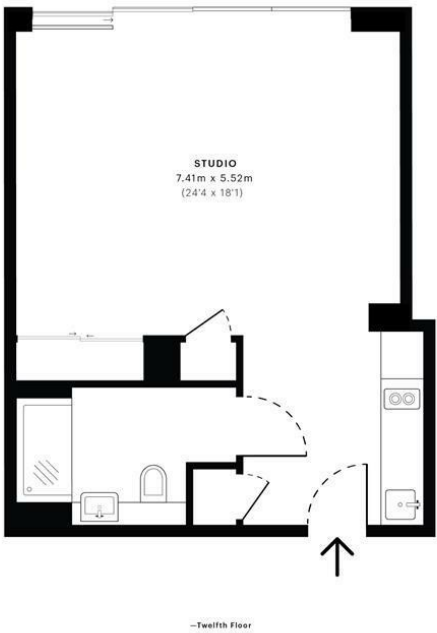


LANDMARK PINNACLE



STUDIO SUITE

→ z



We have prepared these property particulars as a general guide to a broad description of the property. They are not intended to constitute part of an offer or contract. We have not carried out a structural survey and the services, appliances and specific fittings have not been tested. All photographs, measurements, floorplans and distances referred to are given as a guide only and should not be relied upon for the purchase of carpets or any other fixtures or fittings. Lease details, service charges and ground rent (where applicable) and council tax are given as a guide only and should be checked and confirmed by your Solicitor prior to exchange of contracts.