



Bravington Road

London, W9

Asking Price £500,000

Positioned on the first floor of a Victorian conversion on a quiet residential street is this charming two bedroom apartment spanning approximately of 507 square feet.

Finished to a high specification throughout the accommodation comprises a large and bright open plan kitchen and reception, master bedroom with plentiful storage, a second bedroom and a family bathroom.

Perfectly positioned on Bravington Road, the apartment is within easy reach of the vibrant amenities, boutiques, and eateries of Maida Vale, Queen's Park, and Notting Hill. Excellent transport links include Queen's Park station (Bakerloo Line & Overground), Westbourne Park (Hammersmith & City Line).

CHESTERTONS



Bravington Road

London, W9

- A charming first floor two bedroom apartment.
- Benefitting from a long lease.
- The apartment is finished to a high specification throughout.
- Positioned on a charming residential street.



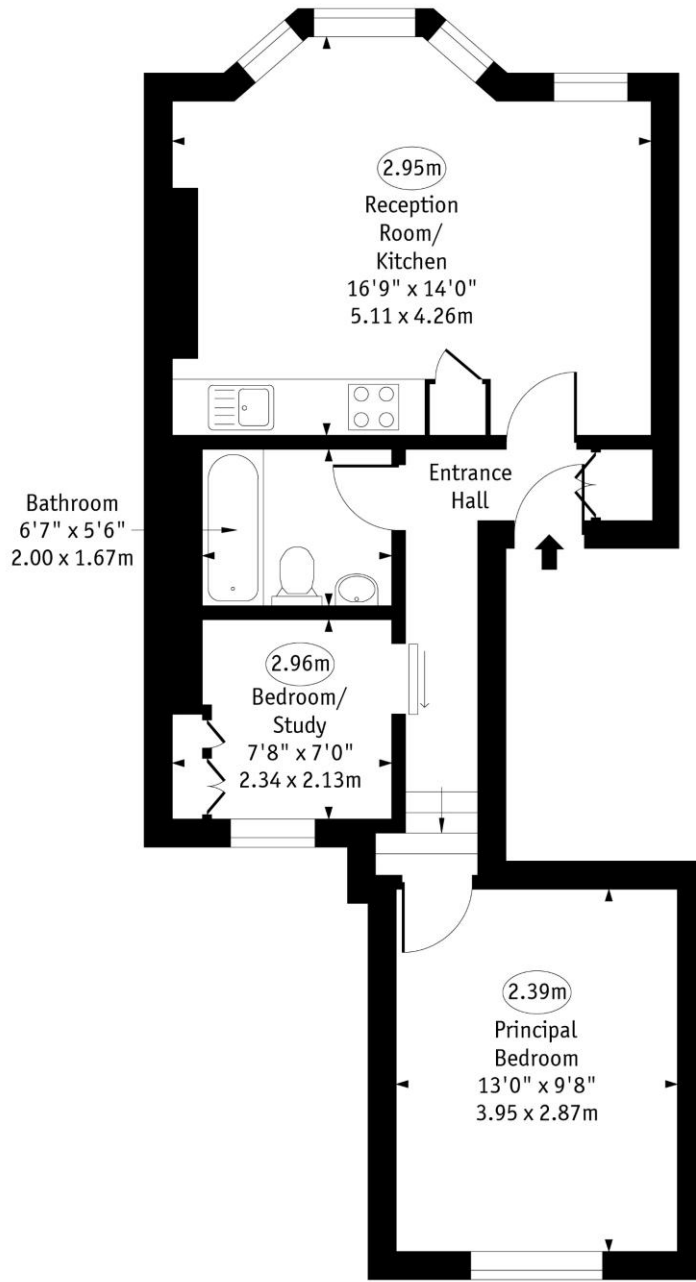
Tenure: Leasehold 115 years 7 months
Service Charge: £584 pa
Ground Rent: £250 pa
Local Authority: City Of Westminster
Council Tax Band: D

Chestertons Little Venice Sales

26 Clifton Road
Maida Vale
London
W9 1SX
littlevenice@chestertons.co.uk
020 7286 4632
chestertons.co.uk

Bravington Road, W9

○ - Ceiling Height



First Floor

Approx Gross Internal Area 507 Sq Ft - 47.07 Sq M

Every attempt has been made to ensure the accuracy of the floor plan shown. However, all measurements, fixtures, fittings, and data shown are approximate interpretations and for illustrative purposes only. Measured according to the RICS. Not To Scale.

www.goldlens.co.uk
Ref. No. 032016JH

