



FERMOY ROAD, W9

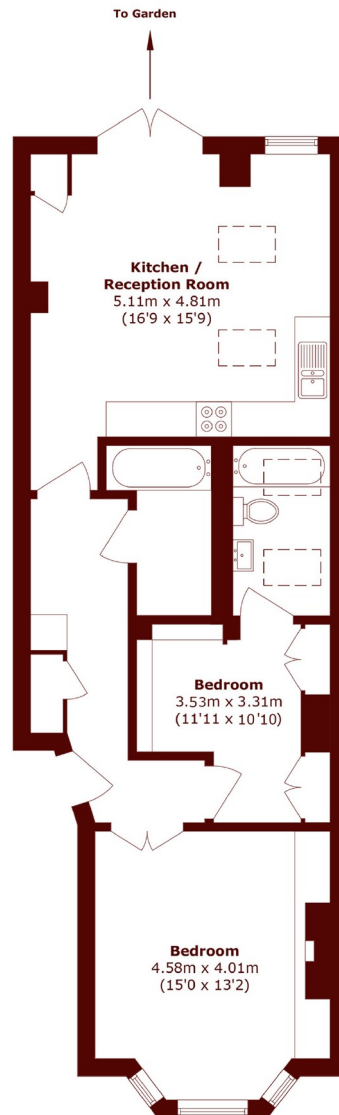
£650,000

Situated within an elegant Victorian conversion, this beautifully renovated and extended two-bedroom garden flat offers a perfect blend of period charm and modern design

Share of freehold
Chain free
Ground floor

Private garden
Modern interior
Fully extended

STEP INSIDE FERMOY ROAD



Total area (approx.): 74.4 sq. m (800.8 sq. ft)

Little Venice
020 7993 3050

Energy Rating: D We aim to make our particulars both accurate and reliable. However, they are not guaranteed; nor do they form part of an offer or contract. If you require clarification on any points then please contact us, especially if you're traveling some distance to view. Please note that appliances and heating systems have not been tested and therefore no warranties can be given as to their good working order

**MARSH &
PARSONS**