



Flat 8, Everards Court, 7 John Street, Bristol
Bristol

In Excess of **£260,000**



Flat 8, Everards Court

7 John Street, Bristol

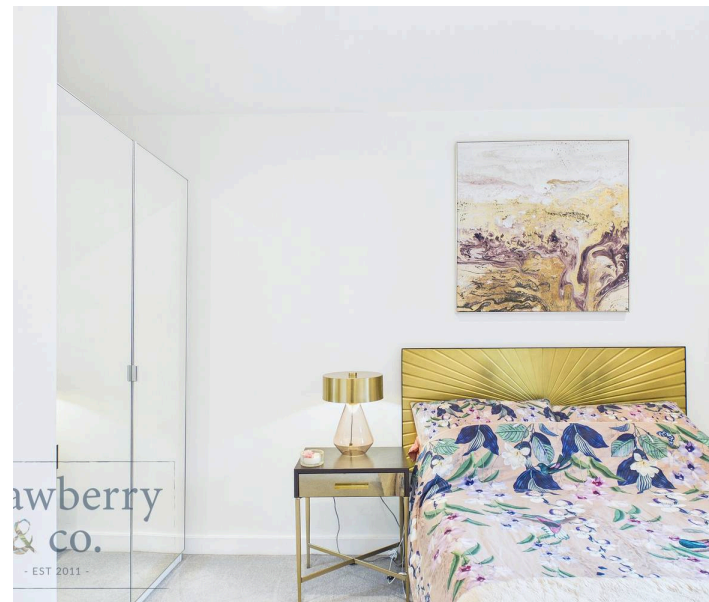
Stylish one-bed second floor apartment in Everards Court, Bristol city centre. Modern open-plan living, lift access and no onward chain. Council Tax band: C

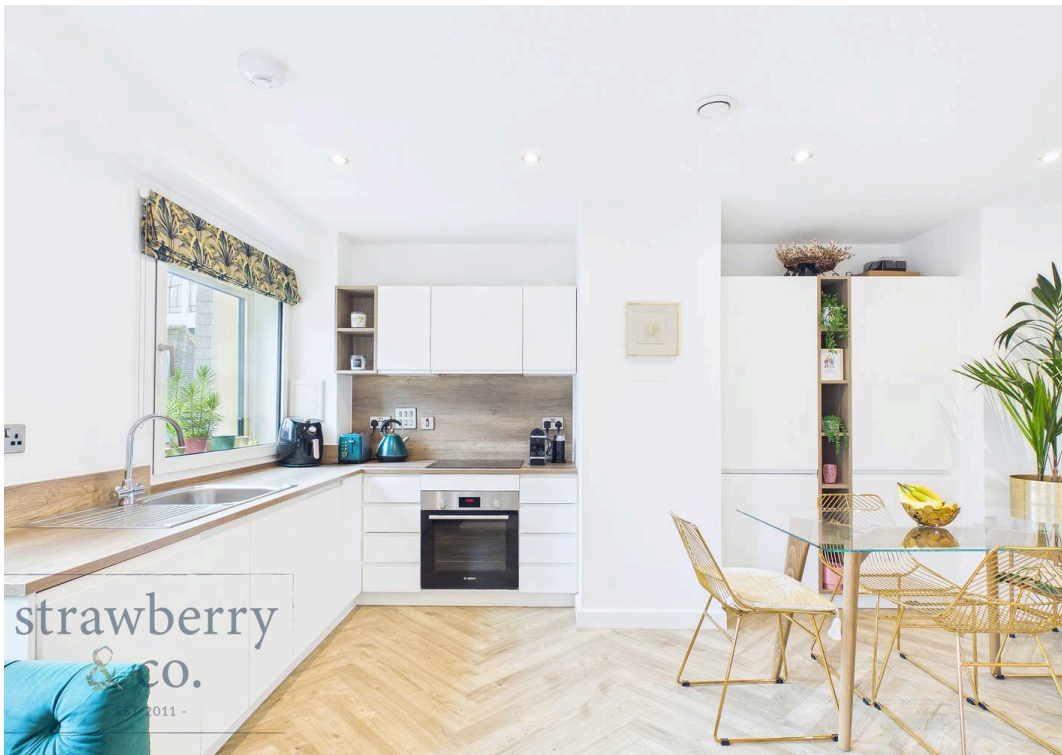
Tenure: Leasehold

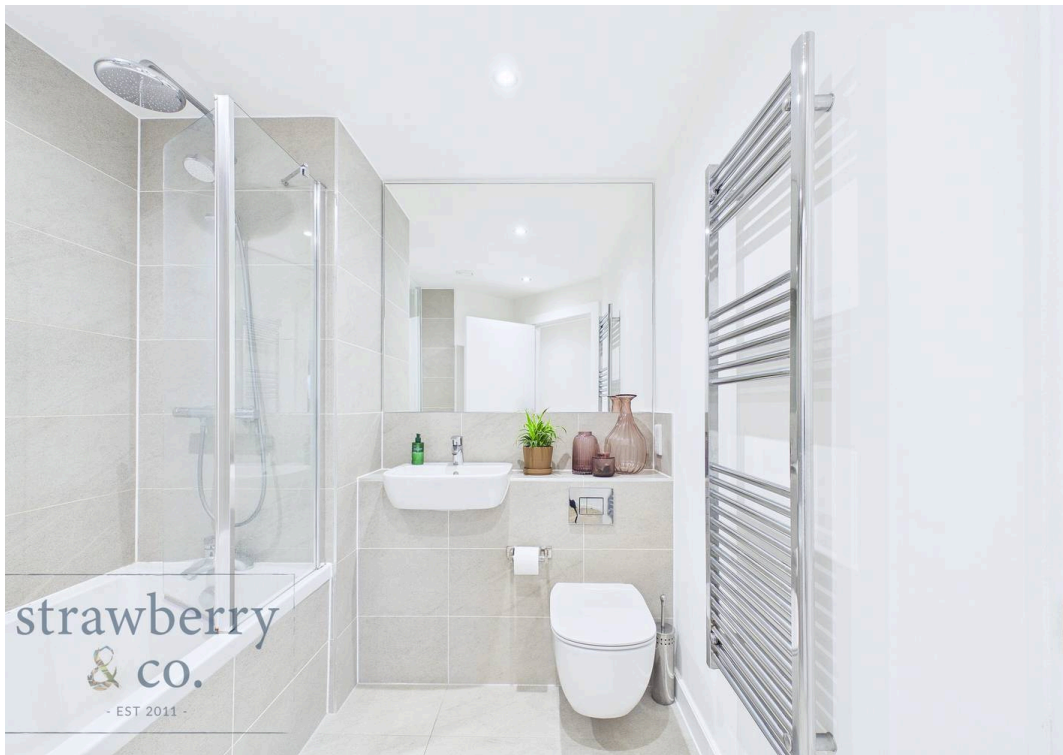
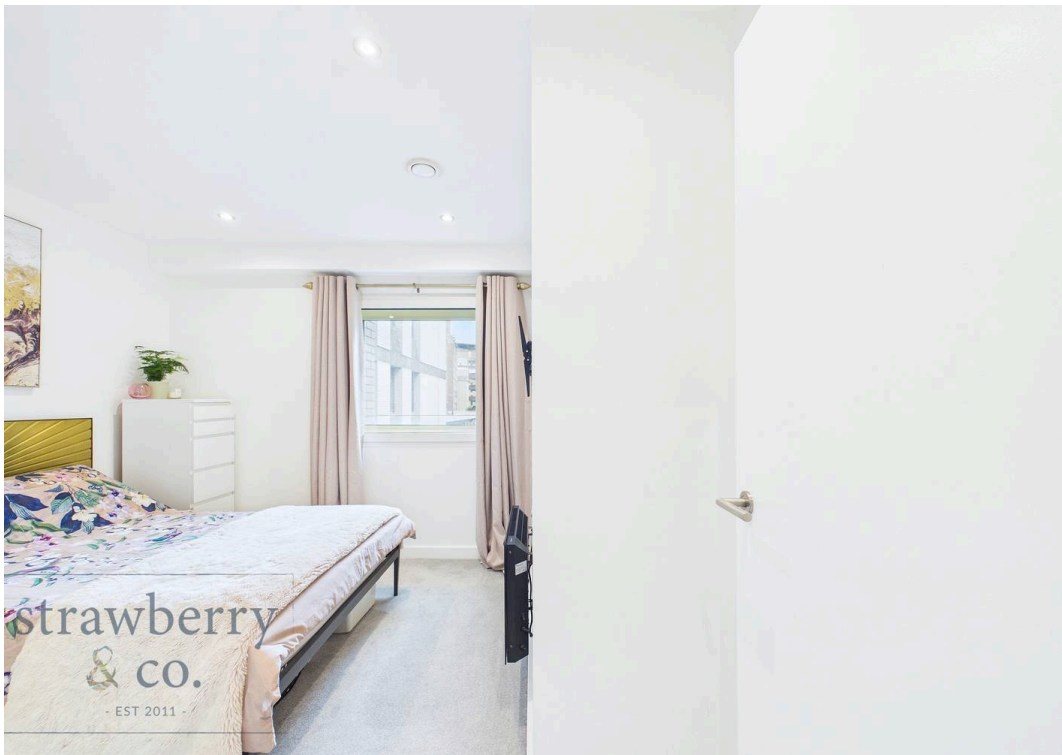
EPC Energy Efficiency Rating: D

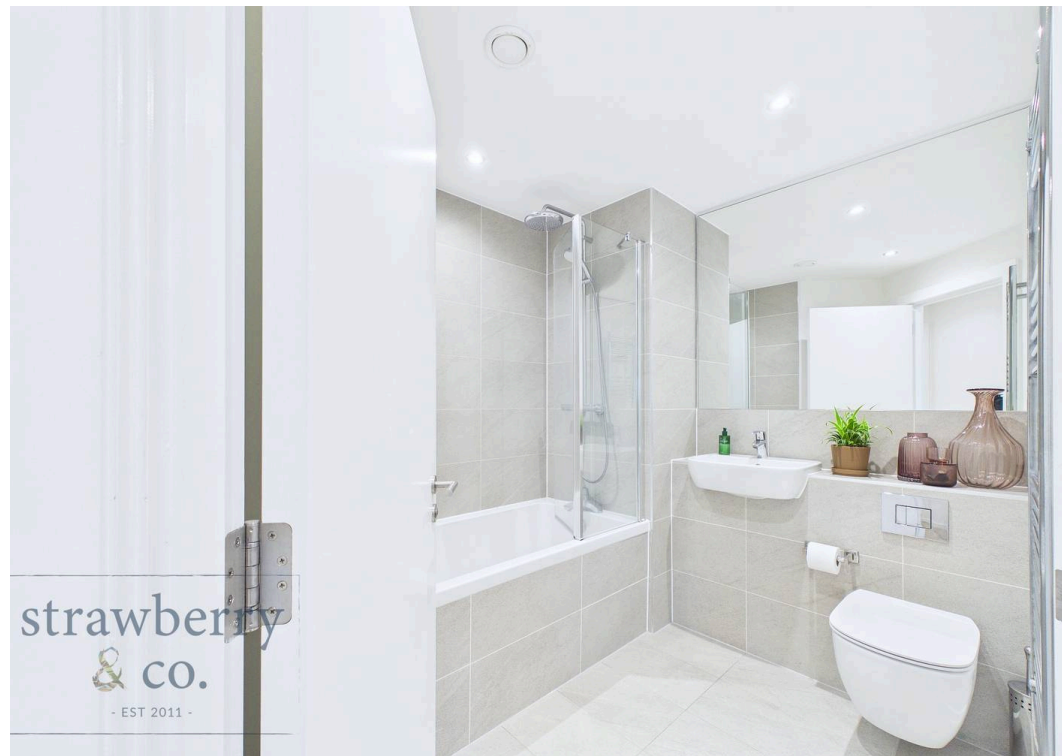
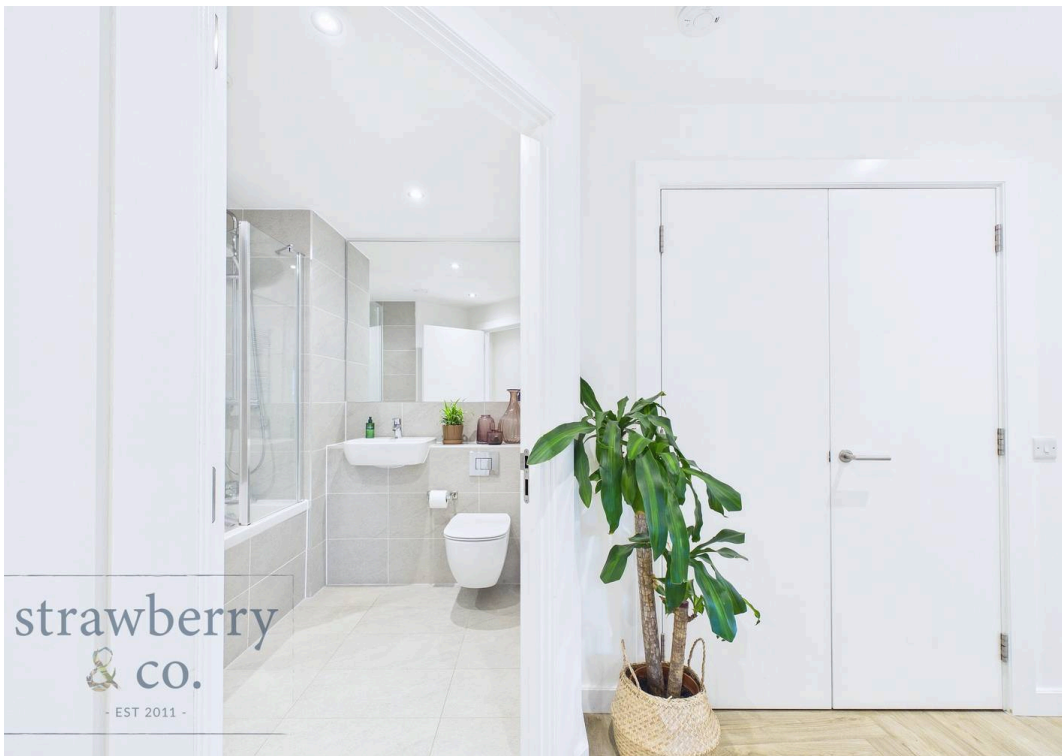
EPC Environmental Impact Rating: C

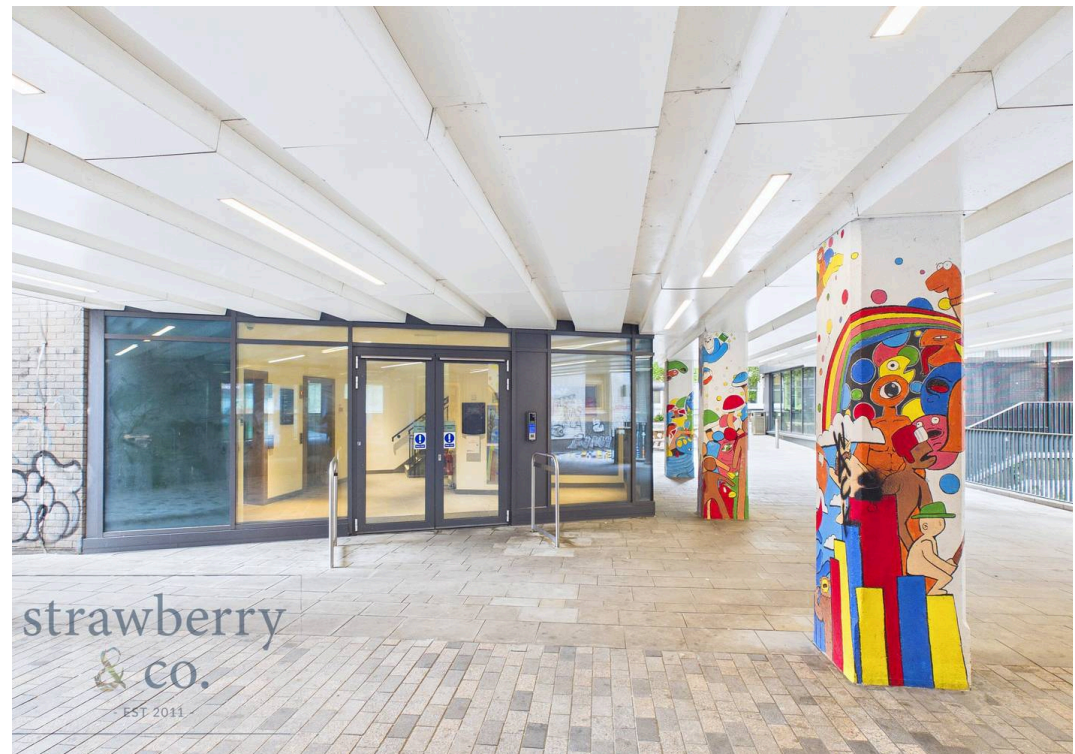
- CITY CENTRE LIVING
- MODERN APARTMENT
- 2ND FLOOR
- NEW BUILD CIRCA 2022
- NO CHAIN
- POPULAR EVERARDS COURT DEVELOPMENT
- LIFT ACCESS
- HEART OF BRISTOL LOCATION
- OPEN-PLAN LIVING AREA
- CONTEMPORARY KITCHEN



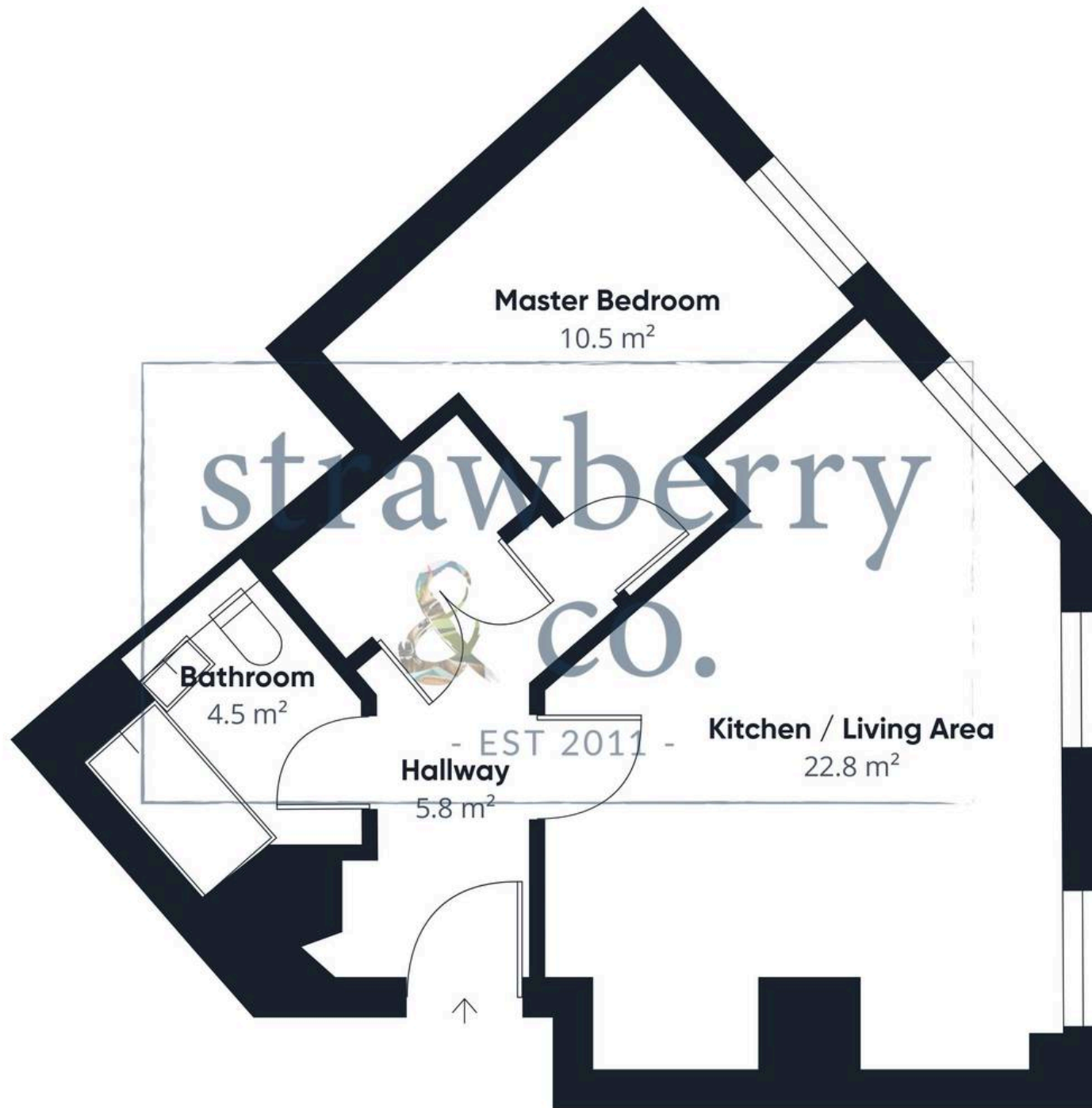














Strawberry & Co

Strawberry & Co, Studio 2.04b HERE, 470 Bath Road, Bristol - BS4 3AP

01174767660

hello@strawberryand.co

strawberryand.co/