

# Towers Wills

Town & Country

📞 01935 577 032 | 01460 298 530 | ✉ info@towerswills.co.uk



11, Vincent Place, Yeovil, Somerset BA20 1JA

**£220,000**

Towers Wills are pleased to present to the market this beautifully presented mid-terraced home, situated within easy reach of Yeovil town centre and its many amenities. This superbly modernised three-bedroom property has been thoughtfully reconfigured and improved to a high standard throughout, offering stylish and versatile accommodation arranged over three floors.

### Accommodation:

The accommodation briefly comprises an inviting entrance hallway providing access to the comfortable lounge, ideal for relaxation. A further door leads through to the stunning contemporary kitchen, finished to an excellent standard and opening into a spacious dining area, creating an ideal space for both everyday living and entertaining. Also accessed from the dining area is a useful downstairs cloakroom/W.C.

To the first floor are two well-proportioned double bedrooms, both served by the modern family bathroom, which benefits from both a bath and separate shower and finished to a high standard.

A particular feature of the property is the generous loft room, currently utilised as a third bedroom, offering flexible additional accommodation.

### Outside:

There is an attractive low-maintenance rear garden, laid partly to patio with a raised lawned area.

An internal viewing is strongly recommended to fully appreciate the quality and standard of accommodation on offer. This property represents an excellent opportunity for first-time buyers, families and investors alike.

## Key Features

- Terraced Property
- Well Presented Throughout
- Three Bedrooms
- Two Reception Rooms
- Low Maintenance Rear Garden

## Contact Us

### Towers Wills Estate Agents - Yeovil

114, Hendford Hill  
Yeovil

Somerset

BA202RF

T: 01935 577032

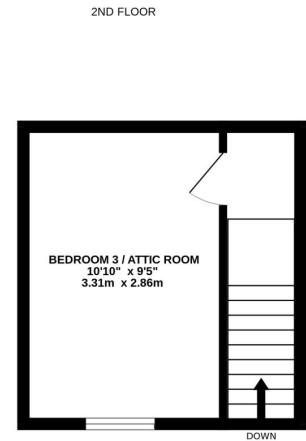
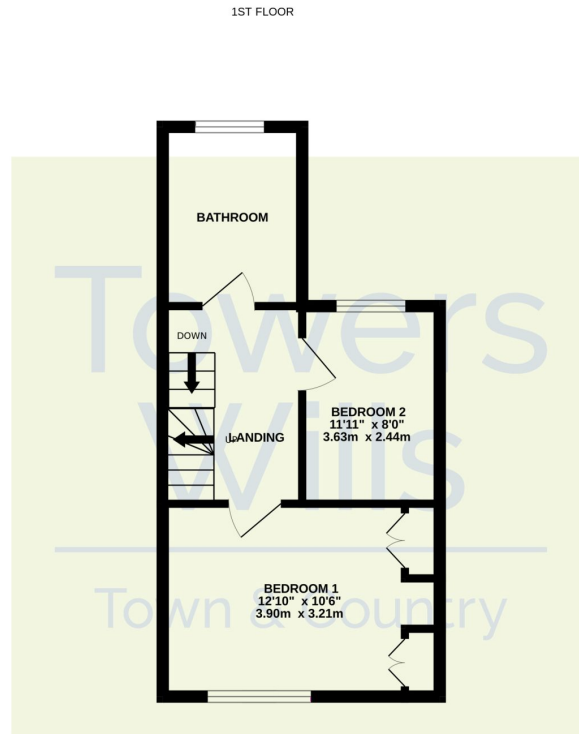
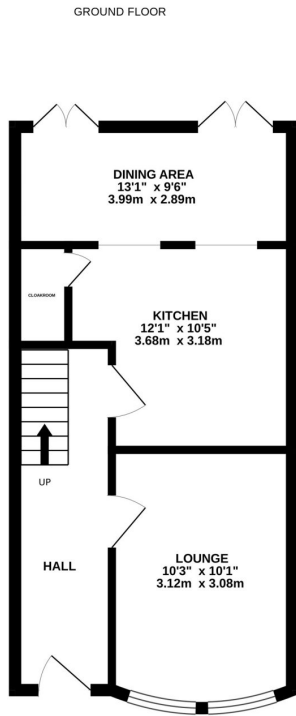
E: [info@towerswills.co.uk](mailto:info@towerswills.co.uk)

## Energy Efficiency

Score	Energy rating	Current	Potential
92+	A		
81-91	B		86 B
69-80	C		
55-68	D	61 D	
39-54	E		
21-38	F		
1-20	G		



# Floor Plan



Whilst every attempt has been made to ensure the accuracy of the floorplan contained here, measurements of doors, windows, rooms and any other items are approximate and no responsibility is taken for any error, omission or mis-statement. This plan is for illustrative purposes only and should be used as such by any prospective purchaser. The services, systems and appliances shown have not been tested and no guarantee as to their operability or efficiency can be given.  
Made with Metropix ©2025

Please Note No tests have been undertaken of any of the services and any intending purchasers should satisfy themselves in this regard. Towers Wills Ltd for themselves and for the vendor of this property whose agents they are, give notice that, (i) these particulars do not constitute any part of an offer or contract, (ii) all statements contained within these particulars are made without responsibility on the part of Towers Wills or the vendor, (iii) whilst made in good faith, none of the statements contained within these particulars are to be relied upon as a statement of representation or fact, (iv) any intending purchaser must satisfy him/herself by inspection or otherwise as to the correctness of each of the statements contained within these particulars, (v) the vendor does not make or give either Towers Wills or any person in their employment any authority to make or give representation or warranty whatsoever in relation to this property.

Photographs / Floor Plans Photographs are reproduced for general information and it must not be inferred that any item is included for sale with this property. Please note floor plans are not to scale and are for identification purposes only. The photographs used in these particulars may have been taken with the use of a wide angle lens. If you have any queries as to the size of the accommodation or plot, please address these with the agent prior to making an appointment to view

**Towers Wills**

The White House, 114 Hendford Hill, Yeovil BA20 2RF

Yeovil 01935 577032 / South Petherton 01460 298530

[info@towerswills.co.uk](mailto:info@towerswills.co.uk) | [www.towerswills.co.uk](http://www.towerswills.co.uk)