



Portsmouth Road, SW15

£535,000

Dexters



Portsmouth Road, SW15

Set within an attractive period mansion block, this well-proportioned three-bedroom apartment offers bright and spacious accommodation throughout, extending to approximately 968 sq ft.

The property features a generous reception/dining room with a wide bay window, flooding the space with natural light and offering ample room for both relaxing and entertaining. There is a separate kitchen with modern fittings, three well-sized bedrooms, and a family bathroom, all arranged off a central hallway. The apartment retains a warm, homely feel with neutral décor and plenty of potential to update and personalise.

The development has tennis and newly refurbished squash courts, communal gardens, off-street parking and a porter.

Highlands Heath is ideally positioned on Portsmouth Road, moments from the green open spaces of Putney Heath and close to the amenities of Putney and Barnes. Excellent transport links are available via Putney railway station for direct services into Waterloo, as well as East Putney Underground Station, providing easy access into Central London.

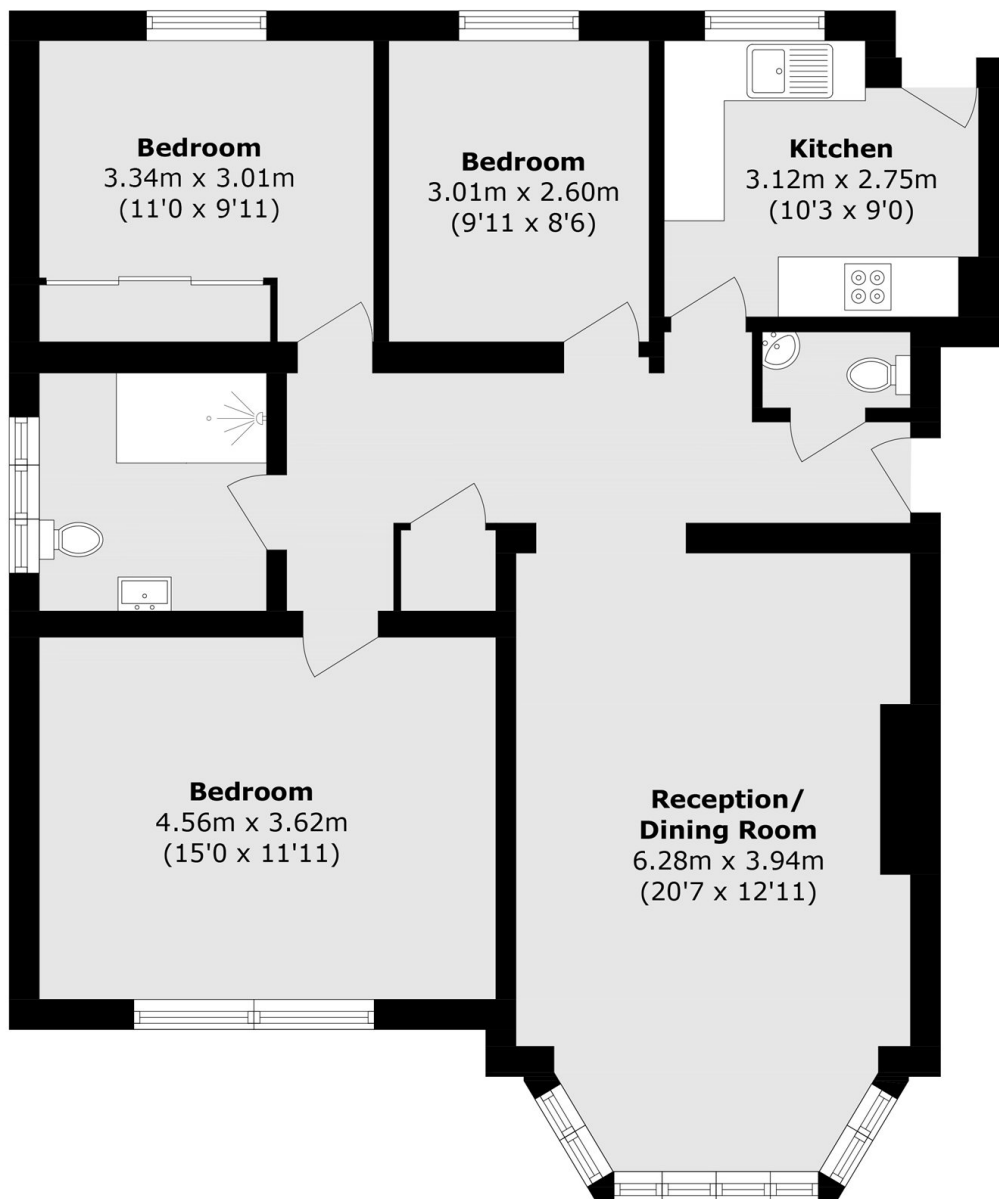
Features

- Three Bedrooms
- One Bathroom
- Share of Freehold
- Tennis and Squash Courts
- Chain Free
- 968 Sq. Ft





Portsmouth Road, London, SW15



Total area (approx.): 90.0 sq. m (968.8 sq. ft)