



Connells

Warren Way
Glebe Farm Milton Keynes



Property Description

Nestled in the desirable Glebe Farm area of Milton Keynes, this modern first bedroom first floor flat offers a fantastic opportunity for first time buyers to get a foothold in Milton Keynes. The property is presented in fantastic condition throughout, boasting contemporary fixtures and fittings.

Inside you'll find a bright and airy open plan living space, perfect for relaxing and entertaining. The kitchen is well equipped with integrated appliances. The main bedroom is generously sized, providing ample space for furnishings and storage. Externally the property benefits from allocated parking.

Communal Entrance

Entry via a secure entry door, rear access to parking.

Entrance Hall

Wall mounted radiator, double glazed window, storage cupboard.

Open Plan Living Area

Wall and base units, induction hob, extractor hood over, stainless steel sink and drainer, integrated fridge and freezer, integrated dishwasher, low level electric oven, recessed spotlights, double glazed door to balcony, radiator.

Bedroom One

Double glazed windows, carpeted flooring, radiator and built in wardrobes.

Bathroom

Three-piece suite comprising mains fed shower over bath, WC & wash hand basin, electric shaver socket, tiled floor and splashbacks, towel radiator.

Outside Space

Landscaped shrubbery and trees.

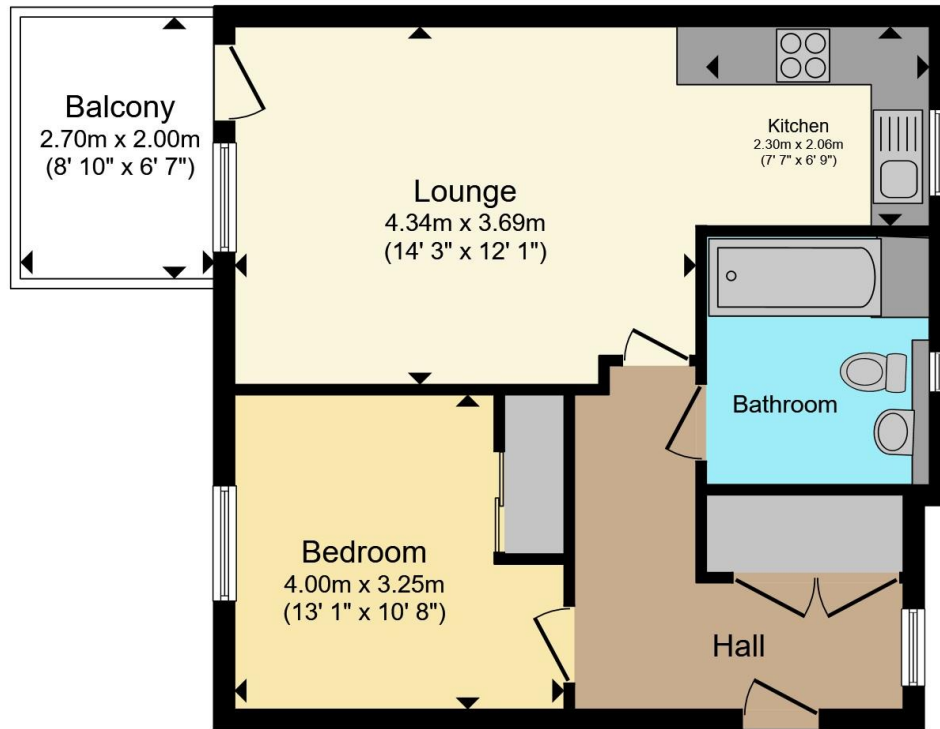
Balcony

Decked balcony with metal balustrade and frosted glass panelling.

Parking

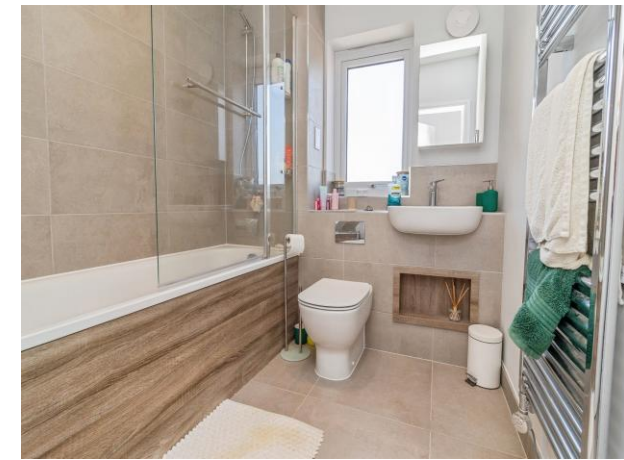
Allocated parking for one vehicle. Visitor parking also available.





Total floor area 49.8 m² (536 sq.ft.) approx

This floor plan is for illustrative purposes only. It is not drawn to scale. Any measurements, floor areas (including any total floor area), openings and orientation are approximate. No details are guaranteed, they cannot be relied upon for any purpose and they do not form part of any agreement. No liability is taken for any error, omission or misstatement. A party must rely upon its own inspection(s). Powered by www.propertybox.io



To view this property please contact Connells on

T 01908 691606

E walnuttree@connells.co.uk

26A Fyfield Barrow The Walnut Tree Local Centre Walnut Tree

EPC Rating: B

Council Tax Band: A

Service Charge: 2524.84

Ground Rent: 100.00

Tenure: Leasehold

view this property online connells.co.uk/Property/WNT308163

This is a Leasehold property with details as follows; Term of Lease 250 years from 29 Sep 2021. Should you require further information please contact the branch. Please Note additional fees could be incurred for items such as Leasehold packs.



1. MONEY LAUNDERING REGULATIONS Intending purchasers will be asked to produce identification documentation at a later stage and we would ask for your co-operation in order that there will be no delay in agreeing the sale. 2. These particulars do not constitute part or all of an offer or contract. 3. The measurements indicated are supplied for guidance only and as such must be considered incorrect. Potential buyers are advised to recheck measurements before committing to any expense. 4. We have not tested any apparatus, equipment, fixtures, fittings or services and it is in the buyers interest to check the working condition of any appliances.

Connells Residential is registered in England and Wales under company number 1489613, Registered Office is Cumbria House, 16-20 Hockliffe Street, Leighton Buzzard, Bedfordshire, LU7 1GN. VAT Registration Number is 500 2481 05.

See all our properties at www.connells.co.uk | www.rightmove.co.uk | www.zoopla.co.uk

Property Ref: WNT308163 - 0003