



hrt
herbert r thomas

7 Church Rise, Wenvoe, CF5 6DE

Vale of Glamorgan

£1,150,000

7 Church Rise

- Substantial detached executive family home.
- Spacious, well proportioned living and bedroom accommodation.
- Ideal for a large or extended family.
- Private, mature, landscaped garden plot.
- Peaceful edge of village location.
- Three reception rooms and conservatory.
- Five bedrooms. Principle with en-suite wet room.
- Outdoor swimming pool, plus gazebo with hot tub.
- Excellent commuting options.

7 Church Rise offers an exceptional blend of space, style, and lifestyle, combining elegant interiors with outstanding outdoor amenities—all within a peaceful yet convenient village setting.

Council Tax band: H

Tenure: Freehold



Set within a private, mature plot in a sought-after, edge-of-village location, **7 Church Rise** is an impressive five-bedroom detached residence offering extensive and versatile accommodation ideally suited to modern family living.

Approached via a sweeping driveway, the property enjoys a commanding presence, complemented by beautifully landscaped gardens, ample parking, a detached double carport, and superb outdoor leisure amenities including a heated swimming pool.

A welcoming **central reception hall** provides an elegant introduction to the home, featuring a staircase rising to a striking galleried landing. Adjoining the reception hall is a spacious cloak and shoe cupboard, along with a stylish **cloakroom** fitted with a contemporary two-piece suite.

The **principal reception room** is a beautifully proportioned dual-aspect lounge/dining space, flooded with natural light via a front-facing bay window and French doors opening onto the rear garden. Finished with porcelain tiled flooring and a statement marble-effect chimney breast with a living flame gas fire, this room is ideal for both entertaining and relaxing.

A further **sitting room**, also with a bay window, offers a more intimate retreat, enhanced by engineered oak flooring and a characterful stone and brick fireplace and living flame gas fire.

The heart of the home is the spectacular **33ft kitchen/dining room**, designed for both everyday living and entertaining. It features an extensive range of high-gloss cabinetry, a central island, and integrated premium appliances, all set against a sleek porcelain tiled flooring. French doors and glazing provide seamless access and views over the garden. A **conservatory** adjoins the kitchen, offering a delightful additional seating area bathed in natural light.

A well-appointed **utility room** continues the kitchen's design, with matching cabinetry and flooring, enabling further storage and space for appliances, and provides direct access to the rear garden and to the driveway.

A **versatile leisure room** completes the ground floor, currently utilised as a home gym, offering flexible additional space such as a home office or hobby room, alongside a stylish fully tiled shower room..

The **galleried landing** is a standout feature, providing an airy and elegant space with outlooks over the grounds.

The **principal suite** enjoys garden views, fitted wardrobes, and a beautifully upgraded **en-suite** featuring a contemporary, fully porcelain tiled wet room with rainfall shower.

Bedrooms two, three and four are generous doubles with built-in wardrobes and with either front or rear facing aspects, while **bedroom five** also benefits from fitted storage and tranquil garden views.

The **luxury family bathroom** is finished to an exceptional standard, offering a five-piece suite including a double-ended bath, walk-in rainfall shower, and twin vanity basins, all complemented by full porcelain tiling.

Outside, the property is set within **beautifully landscaped, enclosed gardens** offering a high degree of privacy.

To the front, a sweeping driveway provides extensive parking and leads to a **detached spacious double carport**, bordered by established hedging and specimen trees.

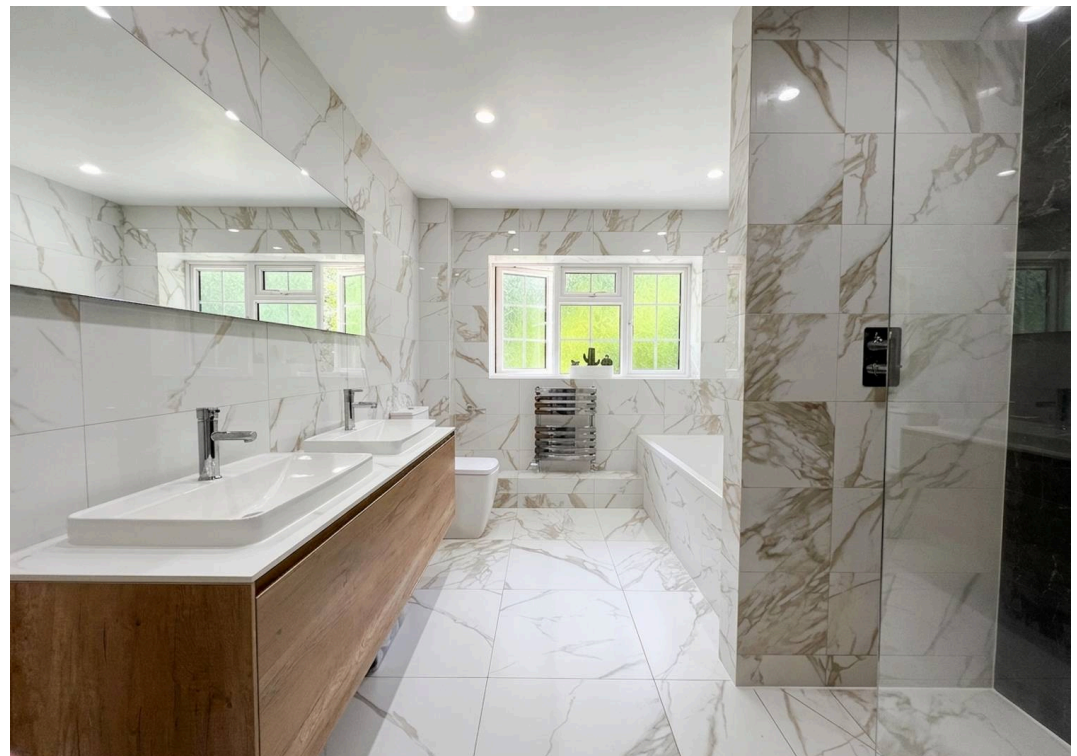
The rear garden is a true highlight—professionally designed to create a private oasis. A large paved terrace extends from the house, perfect for al fresco dining, leading onto manicured lawns. A **decked entertaining area** houses the outdoor heated swimming pool, while a feature waterfall leading to a pond adds a tranquil ambience.

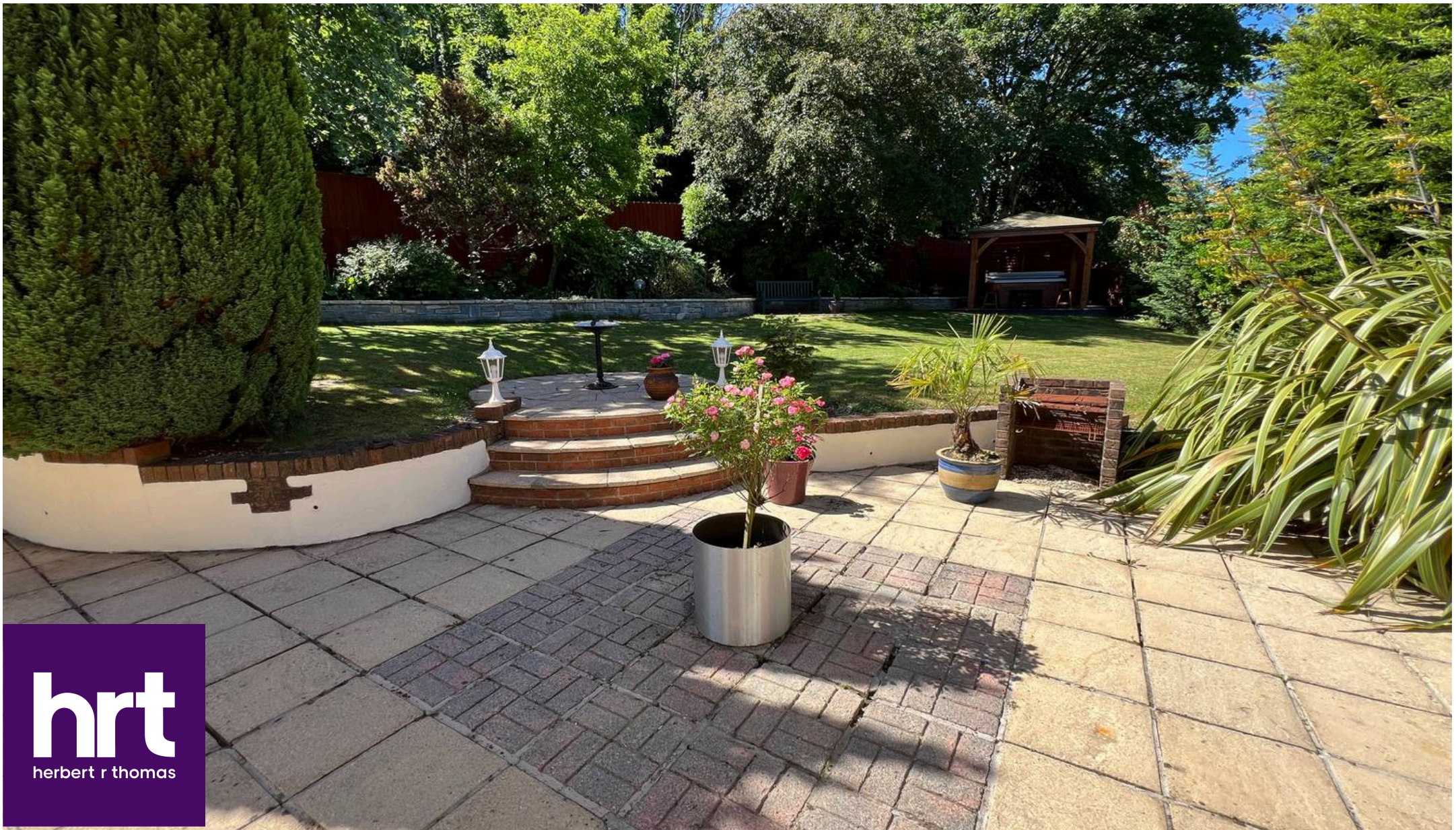
A charming **gazebo with hot tub** is tucked into a secluded corner, creating a perfect space for relaxation and entertaining.



hrt
herbert r thomas







Herbert R Thomas

Herbert R Thomas, 59 High Street - CF71 7YL

01446772911 • cowbridge@hrt.uk.com • www.hrt.uk.com/



These particulars are provided as a general guide only and do not form part of any contract offer. While believed to be accurate, they are not guaranteed. Some images may include CGI or digitally enhanced furnishings for illustrative purposes only and are not included in the sale. All negotiations must be conducted through Herbert R Thomas.