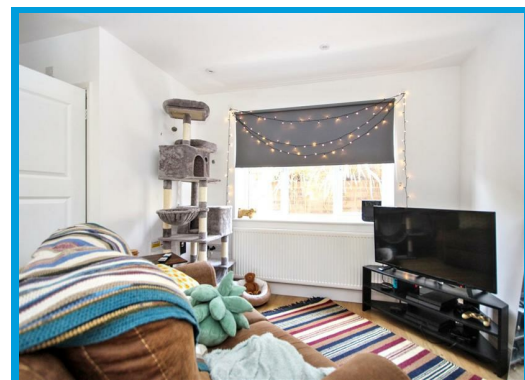
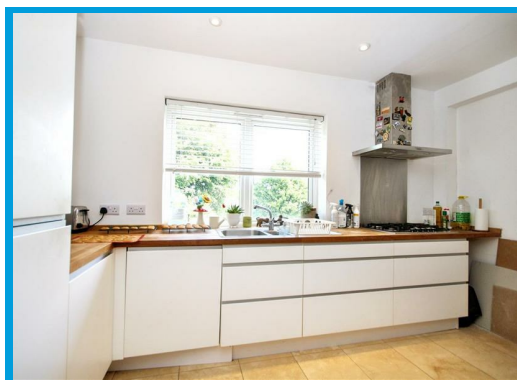




Pewley Way, Guildford, GU1 3PX

£2,300 PCM

Recently refurbished throughout, this impressive 2 bedroom triplex apartment enjoys contemporary living including brand new open-plan kitchen/dining room, reception room with bi-folding doors to the garden.



Description

Nestled in the charming area of Pewley Way, Guildford, this delightful house offers a perfect blend of comfort and style. The property features two well-appointed reception rooms, providing ample space for both relaxation and entertaining. The inviting atmosphere is enhanced by the thoughtful layout, which ensures a seamless flow throughout the home.

The residence boasts two spacious bedrooms, each designed to offer a peaceful retreat at the end of the day. With two modern bathrooms, convenience is at the forefront, catering to the needs of both residents and guests alike.

Guildford is renowned for its picturesque surroundings and vibrant community, making this property an ideal choice for those seeking a tranquil yet connected lifestyle. With local amenities, schools, and transport links within easy reach, this house is perfectly positioned for both families and professionals.

In summary, this charming home on Pewley Way presents an excellent opportunity for anyone looking to settle in a desirable location. With its generous living space and modern conveniences, it is sure to appeal to a wide range of buyers. Do not miss the chance to make this lovely house your new home.



Energy Efficiency Rating		Current	Potential
Very energy efficient - lower running costs			
(92 plus) A			
(81-91) B			
(69-80) C			
(55-68) D			
(39-54) E			
(21-38) F			
1-10 G			
Not energy efficient - higher running costs			
England & Wales		77	90
EU Directive 2002/91/EC			

Environmental Impact (CO ₂) Rating		Current	Potential
Very environmentally friendly - lower CO ₂ emissions			
(92 plus) A			
(81-91) B			
(69-80) C			
(55-68) D			
(39-54) E			
(21-38) F			
1-10 G			
Not environmentally friendly - higher CO ₂ emissions			
England & Wales			
EU Directive 2002/91/EC			

