



**St. Stephens Gardens, W2**

**£1,650,000**

**Dexters**



## St. Stephens Gardens, W2

A stunning first floor flat with high ceilings in a white stucco fronted conversion, on a garden square in Notting Hill.

This is an ideal apartment for anyone that loves entertaining or appreciates style and epic proportions.

The reception room has room for a large dining table, high ceilings, large windows and leads out to a private balcony, which overlooks the communal gardens. The separate kitchen is high specification and has marble counters.

There's two bathrooms and two double bedrooms, the principal leads to a second private terrace and each has built-in storage. The mezzanine has good ceiling height and overlooks the reception and is ideal for a study or second reception room.

St. Stephens Gardens is a garden square conveniently located within walking distance of the chic bars, restaurants and boutiques on Westbourne Grove and Portobello Road. There's plenty of transport links nearby with Royal Oak, Westbourne Park and Bayswater giving access across London.

### Features

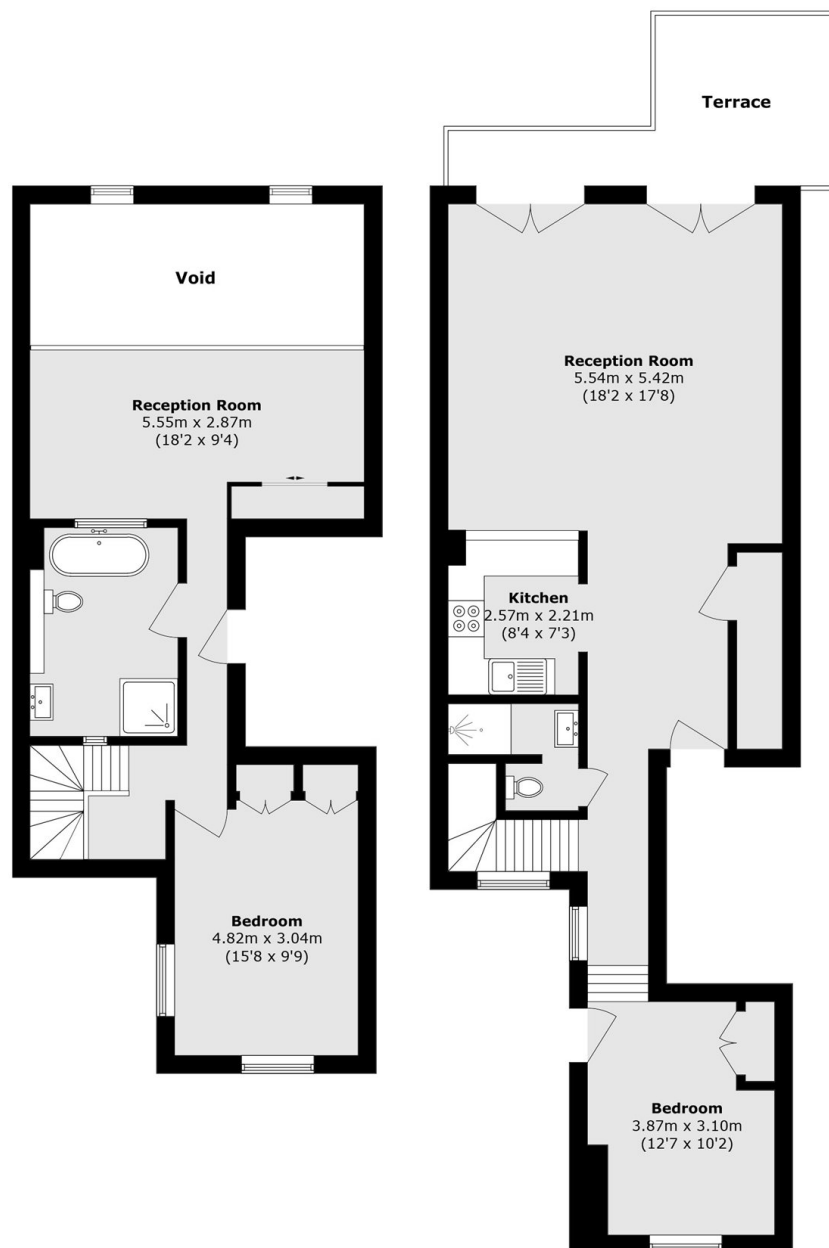
- First Floor Flat
- High Ceilings
- Mezzanine
- Share of Freehold
- Two Balconies
- Garden Square







# St. Stephens Gardens, London, W2



Total area (approx.): 118.3 sq. m (1273.4 sq. ft)  
(Excluding Void)

Terrace area (approx.): 11.6 sq. m (124.9 sq. ft)