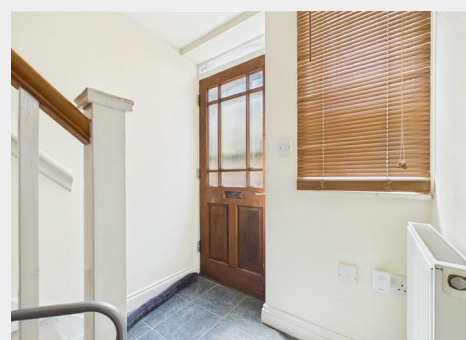


## 4 | 5 | 6, Montpellier Mews, City Centre, Gloucester, GL1 1LF

Auction Guide Price +++ £240,000



- FOR SALE BY ONLINE AUCTION
- WEDNESDAY 22ND JULY 2026
- VIRTUAL TOUR NOW ONLINE
- VIEWINGS – REFER TO DETAILS
- DOWNLOAD FREE LEGAL PACK
- JULY LIVE ONLINE AUCTION
- RESIDENTIAL INVESTMENT OPPORTUNITY
- INCOME £28,140 pa | WAS £345K
- 3 X 1 BED HOUSES | PARKING
- EXTENDED 8 WEEK COMPLETION

Hollis Morgan – JULY LIVE ONLINE AUCTION – A Freehold RESI INVESTMENT OPPORTUNITY comprising 3 x 1 BED HOUSES ( 1141 Sq Ft ) with PARKING let producing £28,140 pa INCOME | REDUCED - was £345k

# 4 | 5 | 6, Montpellier Mews, City Centre, Gloucester, GL1 1LF

## Accommodation

### FOR SALE BY LIVE ONLINE AUCTION

ADDRESS - 4 | 5 | 6 Montpellier Mews, City Centre, Gloucester GL1 1LF

Lot Number 40

The Live Online Auction is on Wednesday 22nd July 2026 @ 12:00 Noon  
Registration Deadline is on Friday 17th July 2026 @ 16:00

The Auction will be streamed LIVE ONLINE via the Hollis Morgan website & you can choose to bid by telephone, proxy or via your computer.  
Registration is a simple online process – please visit the Hollis Morgan auction website and click “REGISTER TO BID”

### THE PROPERTY

The properties are 3 adjoining one bedroom mews style houses ( 1141 Sq Ft ) with off street parking located in GL1 close to Gloucester Docks and the Quays and within walking distance of the city centre and Cathedral.

### SCHEDULE OF ACCOMMODATION

Please refer to floorplans & Virtual Tour

- 4 - 1 bedroom house with open plan living, fitted kitchen, double bedroom & shower room.
- 5 - 1 bedroom house with open plan living, fitted kitchen, double bedroom & shower room.
- 6 - 1 bedroom house with open plan living, fitted kitchen, double bedroom & bathroom with shower.

Sold subject to existing tenancies.

Tenure - Freehold  
Council Tax - A | A | A  
EPC - C | D | D

### THE OPPORTUNITY

RESIDENTIAL INVESTMENT | BREAKUP OPPORTUNITY

The properties are fully let producing £28,140 pa and offered in good decorative order.  
There is scope to break up the block for individual resale

SCHEDULE OF INCOME - £2,345 pcm | £28,140 pa

- 4 Montpellier Mews - AST contract from 23/06/2025 @ £790 pcm |  
Converting to an Assured Periodic Tenancy effective 01/05/26, under the Renters Rights Act 2026
- 5 Montpellier Mews - AST contract from 13/02/2023 @ £770 pcm |  
Converting to an Assured Periodic Tenancy effective 01/05/26, under the Renters Rights Act 2026
- 6 Montpellier Mews - AST contract from 17/11/2024 @ £785 pcm |  
Converting to an Assured Periodic Tenancy effective 01/05/26, under the Renters Rights Act 2026

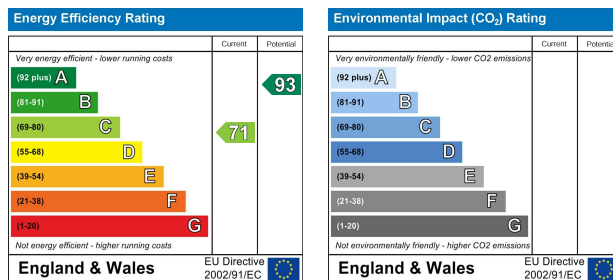
### REDUCED PRICE FOR AUCTION

The property was previously listed with respected local agents at £345,000, and now has a reduced and attractive guide price for sale by live online auction.

## Floor plan



## EPC Chart



9 Waterloo Street  
Clifton  
Bristol  
BS8 4BT

Tel: 0117 973 6565  
Email: post@hollismorgan.co.uk  
www.hollismorgan.co.uk

Hollis Morgan Property Limited, registered in England, registered 7275716.  
Registered address, 5 Upper Belgrave Road, Clifton, Bristol BS8 2XQ

## Auction Property Details Disclaimer

Hollis Morgan endeavour to make our sales details clear, accurate and reliable in line with the Consumer Protection from Unfair Trading Regulations 2008 but they should not be relied on as statements or representations of fact.

Please refer to our website for further details.