



Plot 48 The Kennett

£520,000

Stamp Duty Paid! Situated in the highly sought-after village of Hampton in Arden, The Ashtree Grove development by the renowned David Wilson Homes offers an exceptional opportunity to own a stylish new home. The three-bedroom semi-detached Kennett is one of a selection of thoughtfully designed house types available. Arranged over three floors, the ground floor features a contemporary kitchen-diner with French doors opening onto a private south-facing garden, a spacious lounge, perfectly designed for modern family living.

Bedrooms: 3 | **Bathrooms:** 2 | **Receptions:** 1

Property Type: Semi Detached House

Bedrooms: 3 | Bathrooms: 2 | Receptions: 1

This beautifully designed three-bedroom semi-detached home is arranged over three spacious floors, offering flexible living that's ideal for growing families or couples looking for additional space to work from home.

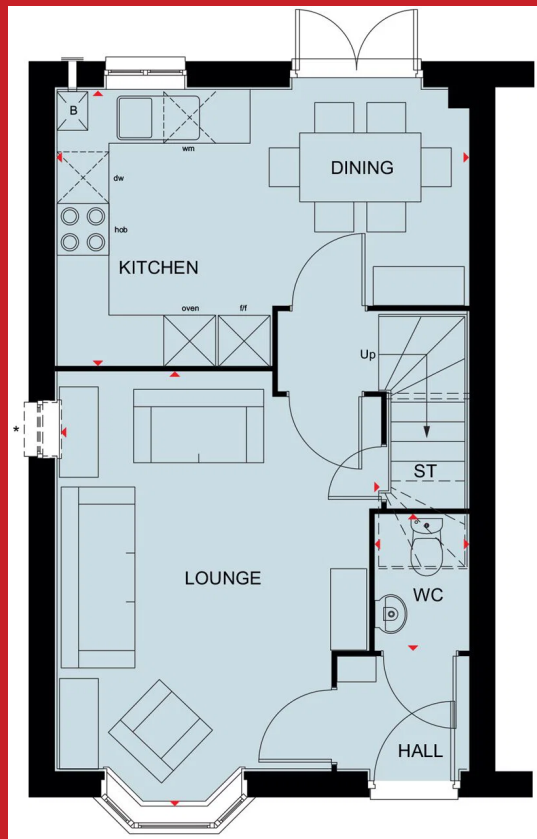
The ground floor features a bright and contemporary kitchen-diner, with French doors opening onto a private south-facing garden, creating the perfect space for entertaining or enjoying family meals. A generous lounge also benefits from French doors, allowing natural light to flood the living space.

On the first floor, you'll find two well-proportioned double bedrooms and a modern family bathroom. Occupying the entire top floor is the impressive main bedroom suite, complete with a stylish ensuite shower room and a dedicated dressing area, creating a peaceful retreat away from the rest of the home.

With ample storage throughout, versatile accommodation, and a sought-after layout, this exceptional home is perfectly suited to modern lifestyles.

Get in touch today to arrange your viewing and discover everything this fantastic home has to offer.





Contact us today!
0121 744 4144 + Option 3
newhomes@smart-homes.co.uk

