



Inverness Terrace, W2

£1,200,000

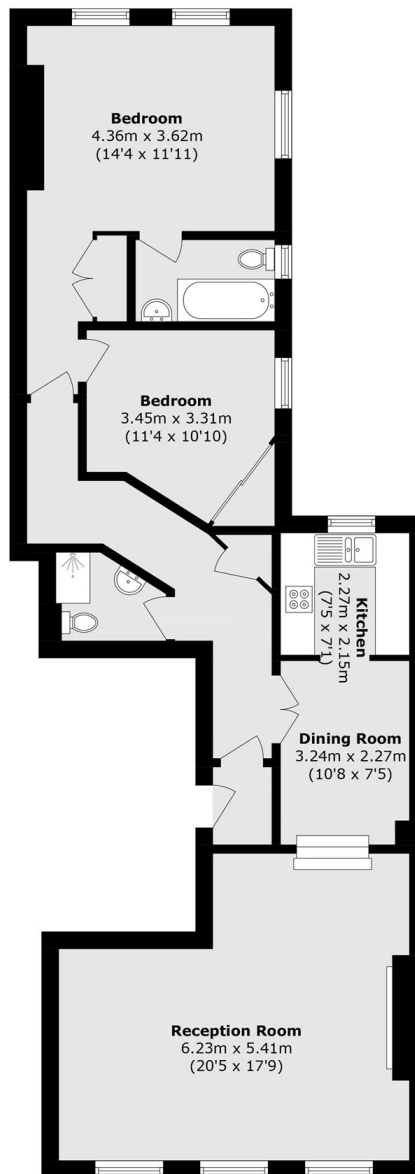
A generously proportioned two double bedroom apartment measuring almost 1,200 Square Foot on the second floor (with lift) of a Victorian conversion. The property has a spacious reception room with a separate dining area and kitchen and an en suite in the principal bedroom.

Inverness Terrace is near to Hyde Park and Queensway with a selection of restaurants, shops and the 'Whiteley's' regeneration. Bayswater and Queensway are the closest undergrounds and Hyde Park is at end of the road.

Features

- Two Double Bedrooms
- Two Bathrooms
- 1,190 Square Foot
- Dining Room
- Separate Kitchen
- Lift

Inverness Terrace, London, W2



Total area (approx.): 110.6 sq. m (1190.5 sq. ft)