



Bourdon Street, W1K

£1,269 Per week

This spacious two double bedroom, two bathroom apartment is located in a secure development.

Located off Berkeley Square in the heart of Mayfair, Bloomfield Court is very close to Regent Street, Bond Street and Green Park.

Features

- Two Double Bedrooms
- Two Bathrooms
- Wooden Flooring
- Lift Access
- Modern Kitchen
- Secure Development

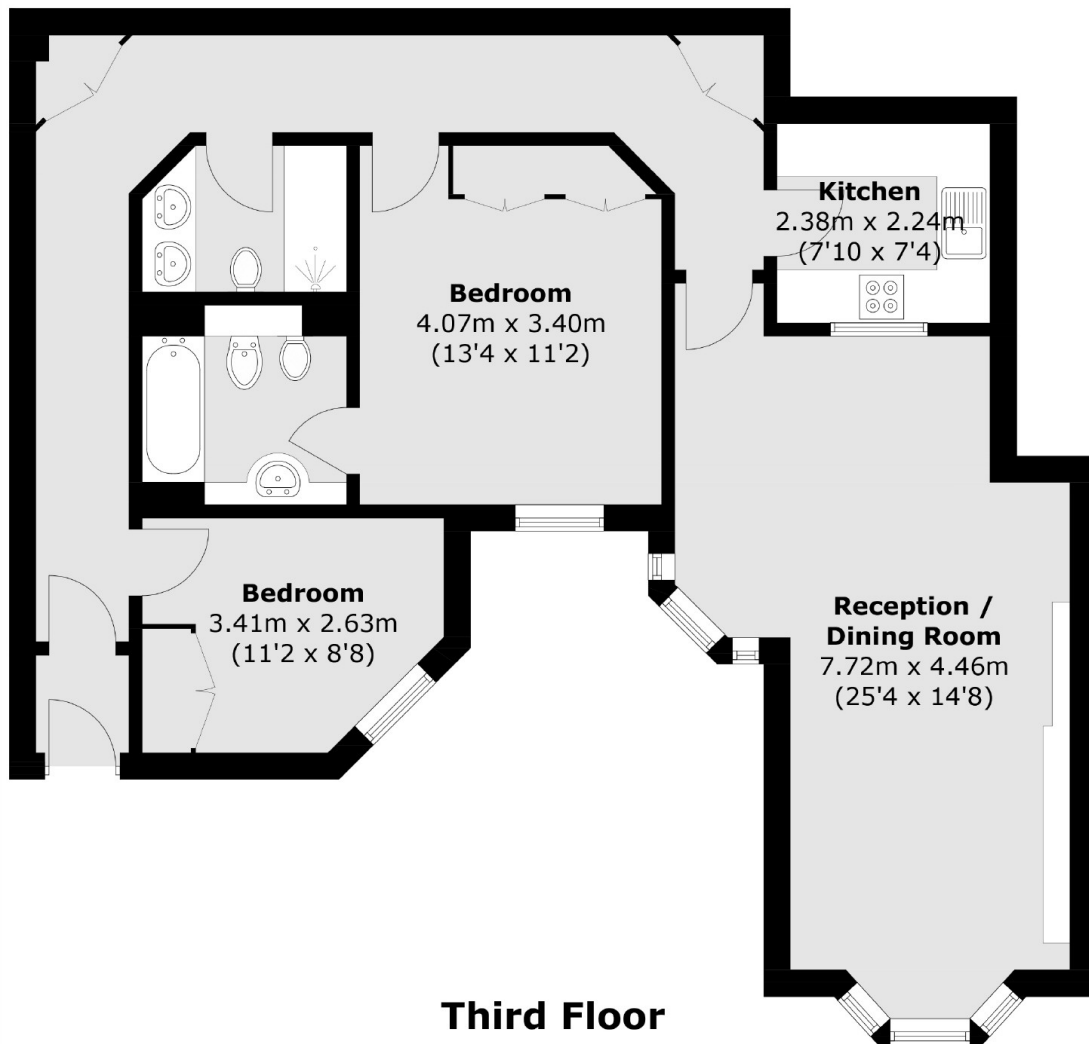


Bourdon Street, W1K

The property offers a luxurious living space, with a dining area and workspace. It also has a modern kitchen and newly fitted carpets.



Bourdon Street,
London, W1K



Total area (approx.): 85.9 sq. m (924.6 sq. ft)

Dexters

Wetherell
102 Mount Street
London
W1K 2TH
Lettings
020 7529 5588

Energy Rating: B. We aim to make our particulars both accurate and reliable. However they are not guaranteed; nor do they form part of an offer or contract. If you require clarification on any points then please contact us, especially if you're traveling some distance to view. Please note that appliances and heating systems have not been tested and therefore no warranties can be given as to their good working order.

RICS Regulated
Estate Agent
and Letting Agent

dexters.co.uk