



CARTER

8 Church Street, Bulkington

Guide Price £375,000





8 Church Street

Bulkington, Bedworth

Spacious 4-bed, 3-bath detached home with 3 reception rooms, modern breakfast kitchen, utility, garage, driveway, and a mature garden tucked away in Bulkington. Close to shops, dining, and amenities.

Council Tax band: E

Tenure: Freehold

EPC Energy Efficiency Rating: D

EPC Environmental Impact Rating: D

- DETACHED HOME IN THE CENTRE OF BULKINGTON VILLAGE
- PRINCIPAL BEDROOM WITH REFURBISHED ENSUITE SHOWER ROOM
- 2 FURTHER DOUBLE BEDROOMS & 1 LARGE SINGLE
- 3 RECEPTION ROOMS INCLUDING A CONSERVATORY
- LARGE LOUNGE WITH SEPARATE DINING ROOM
- BREAKFAST KITCHEN WITH MODERN UNITS
- UTILITY AND GROUND FLOOR WC
- WELL MAINTAINED REAR GARDEN WITH PATIO AREA
- SINGLE ATTACHED GARAGE
- FAMILY BATHROOM





Entrance Hall

A spacious entrance hall awaits, with access to the whole of the ground floor.

Reception 1 - Lounge

21' 8" x 11' 8" (6.60m x 3.55m)

The long is long in shape, with lots of space for a family. There is a window to the front of the house, with sliding patio doors to the rear, giving access to the sunny conservatory.

Reception 3 - Conservatory

10' 0" x 8' 10" (3.06m x 2.69m)

A cosy conservatory, ideal for sitting in the quiet and reading, or perhaps even as a playroom for a young family.

Ground Floor Wc

conveniently located to the rear of the entrance hall with a refitted WC, Vanity wash hand basin and heated towel rail.

Utility Room

5' 7" x 5' 4" (1.71m x 1.63m)

Being positioned at the end of the entrance hall and having a door leading into the garden. The boiler is located here, is just 5 years old, and there is a window which looks out over the conservatory. The double base unit provides great storage space, and there is room for a washing machine with a round stainless steel sink unit.

Breakfast Kitchen

11' 10" x 9' 11" (3.60m x 3.01m)

A good-sized breakfast kitchen which is tiled, with a breakfast Bar big enough for 2 stools, being ideal for those breakfast times, or a quick snack at lunch time perhaps. There is a full range of wall and base units, with a double oven/grill, 5-ring gas hob, extractor, dishwasher, and sink placed in front of the picture window overlooking the lovely garden.



Reception 2 - Dining Room

11' 9" x 10' 8" (3.57m x 3.26m)

This great-sized reception room is located at the front of the house. It is currently being used as a formal dining room, but could be used for a further snug room or perhaps even a home office. The choice is yours.

Bedroom 2 - Rear

11' 8" x 11' 5" (3.55m x 3.49m)

This large double bedroom is located to the rear of the house, with a view over the garden.

Family Bathroom

6' 8" x 6' 0" (2.03m x 1.83m)

This well-maintained family bathroom is to the rear of the house and is fully tiled. There is a high window to the rear of the house.

Bedroom 3 - Front

11' 7" x 9' 1" (3.53m x 2.77m)

A third double bedroom, but this time to the front of the house. Lots of room for additional storage.

Principal Bedroom 1 - Front

11' 10" x 10' 9" (3.61m x 3.28m)

What a lovely-sized principal bedroom. With a large sunny window to the front of the property, and lots of space for furniture. Access to the ensuite is to the side of the room.

Principal En-suite

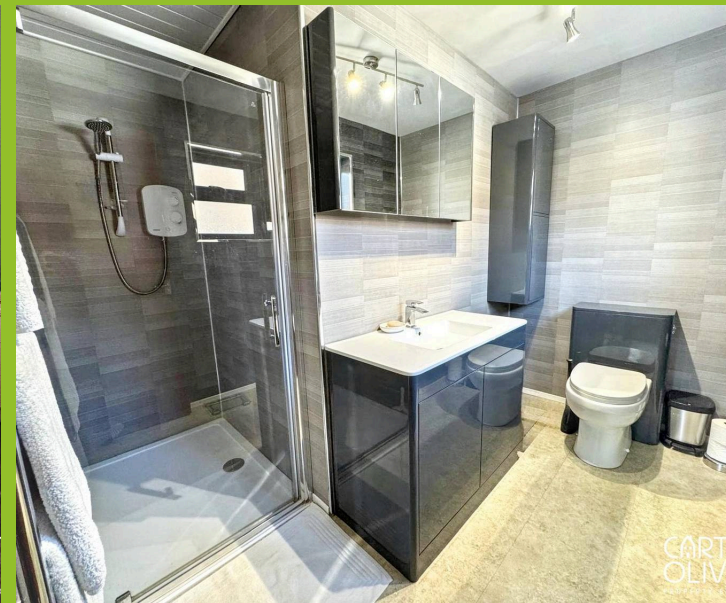
9' 5" x 4' 6" (2.86m x 1.36m)

A recently refurbished accessible ensuite shower room, with a large vanity sink unit, WC, fitted cabinet to match the vanity and a large double shower cubicle. The walls are fully tiled.

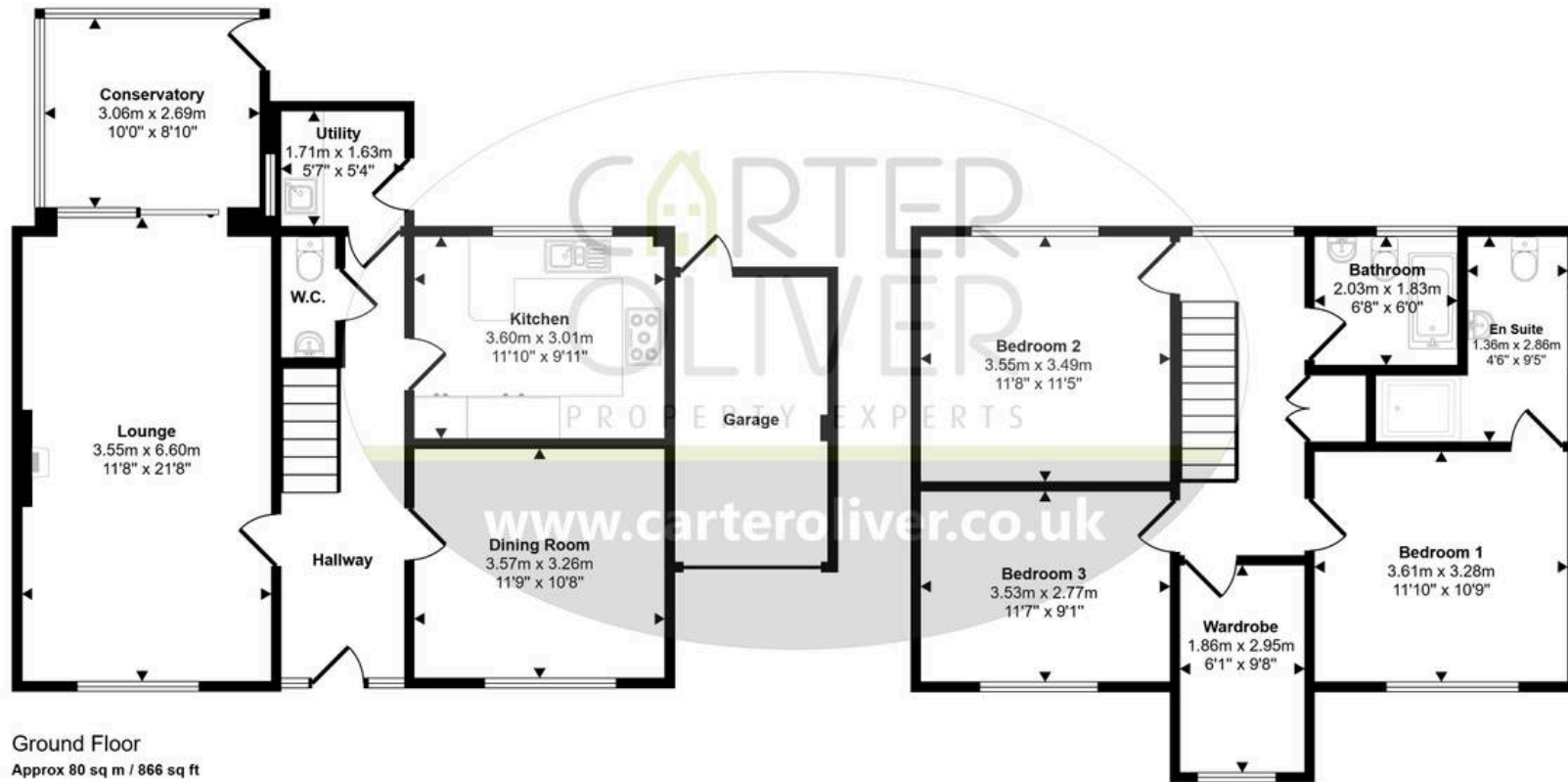
Garage

There is a single garage that has been attached to the main house.

Driveway - 1 Parking Space - A tarmac driveway for 1 car is to the right of the property. There is additional on-street parking for visitors on the road.



Approx Gross Internal Area
141 sq m / 1522 sq ft



This floorplan is only for illustrative purposes and is not to scale. Measurements of rooms, doors, windows, and any items are approximate and no responsibility is taken for any error, omission or mis-statement. Icons of items such as bathroom suites are representations only and may not look like the real items. Made with Made Snappy 360.



Carter Oliver Property

Carter Oliver Property Experts Ltd, 8A Bank Street - LE17 4AG

01455 248033 / 01788 229434

sales@carteroliver.co.uk

www.carteroliver.co.uk