



75 Heron Way, Torquay - TQ2 7SU
£300,000

ABSOLUTE
SALES & LETTINGS





75 Heron Way

Torquay, Torquay

3-bed detached in a corner position with garage, driveway and private garden backing onto woodland. Scope to update. Popular Willows location.

Council Tax band: D

Tenure: Freehold

EPC Energy Efficiency Rating: D

EPC Environmental Impact Rating: E

- Executive detached home
- Corner position plot
- Three double bedrooms
- En suite to principal bedroom
- Spacious lounge
- Kitchen/dining room
- Utility room and WC
- Attached garage with internal access
- Private rear garden backing onto woodland
- Driveway parking



75 Heron Way

Torquay, Torquay

The Willows is a well-established and highly convenient residential area on the edge of Torquay, popular with families and commuters alike due to its excellent access and everyday amenities. A short distance away is the Willows retail park, home to a range of national retailers including Marks & Spencer, Sainsbury's, Boots and Next, along with cafés and takeaway options, making day-to-day living straightforward. For families, the area is well served by a selection of primary and secondary schools, including the highly regarded Torquay Boys' and Girls' Grammar Schools within easy reach. Transport links are a key strength, with quick access to the A380 connecting to Exeter and the M5, ideal for commuting. Regular bus routes operate nearby, and Torre and Torquay train stations provide rail connections further afield. The property is also well placed for access to Torbay Hospital, local parks and green spaces, with a range of coastal walks, beaches and the Torquay seafront all within a short drive.

Absolute Sales & Lettings

Absolute Sales & Lettings Ltd, 13 Ilsham Road - TQ1 2JG

01803 214214

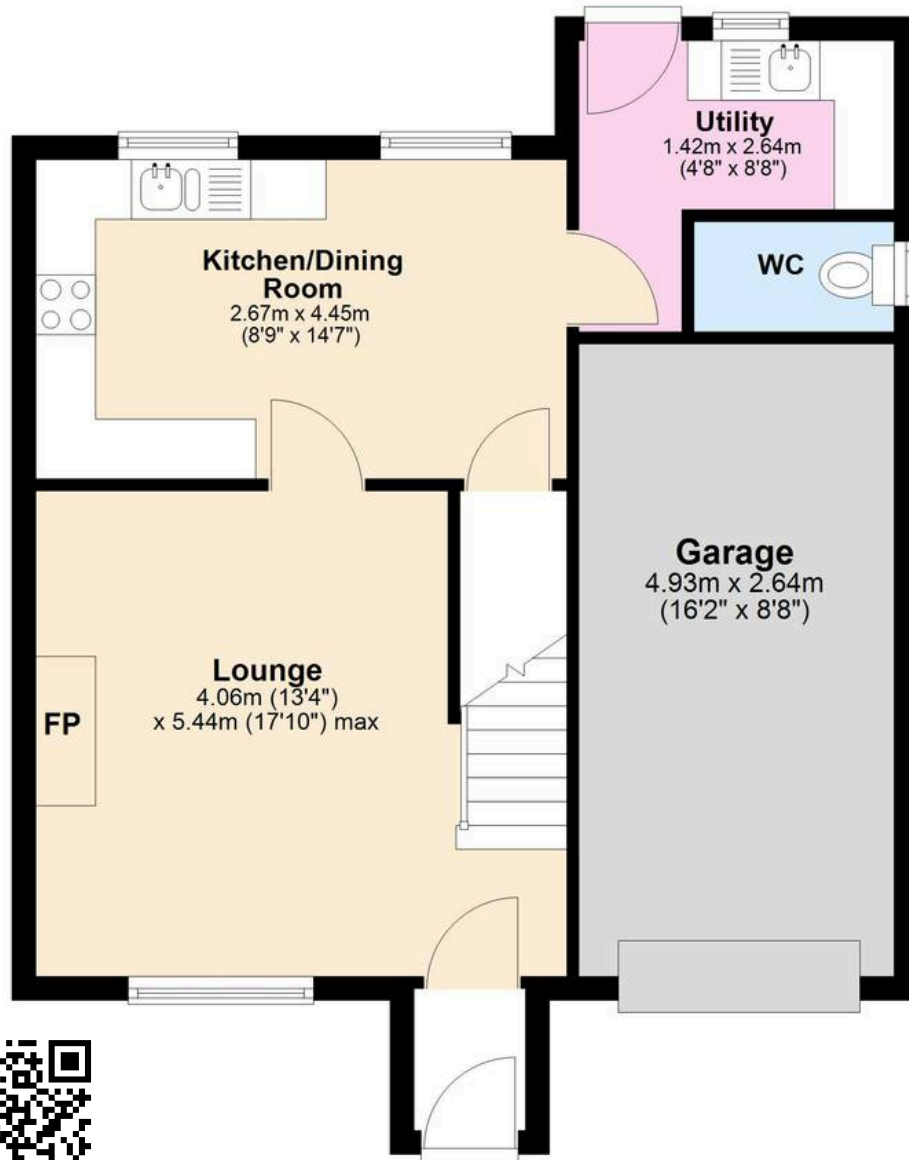
torquay@movewithabsolute.co.uk

movewithabsolute.co.uk/



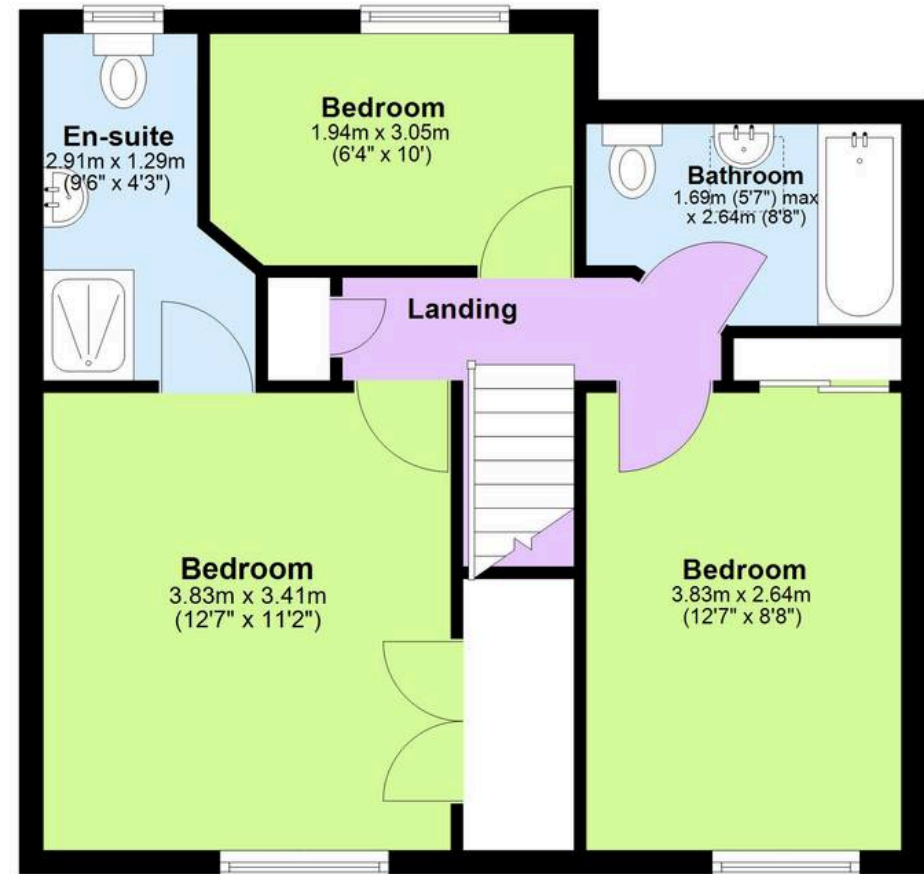
Ground Floor

Approx. 55.9 sq. metres (602.0 sq. feet)



First Floor

Approx. 47.0 sq. metres (506.4 sq. feet)



Total area: approx. 103.0 sq. metres (1108.3 sq. feet)