



DUCHESS OF BEDFORDS WALK, £2,250,000

Three Bedrooms
Two Bathrooms
Allocated Parking
Raised Ground Floor
Porter
Leasehold

@marshandparsons
marshandparsons.co.uk

MARSH &
PARSONS

ABOUT THE PROPERTY

A spacious three bedroom lateral apartment in one of Kensington's most prestigious residential buildings.

Duchess of Bedford House is ideally positioned for the open spaces of Holland Park and the excellent facilities found along Kensington High Street (Circle and District Lines) and Notting Hill Gate (Central Line and Circle and District Lines).

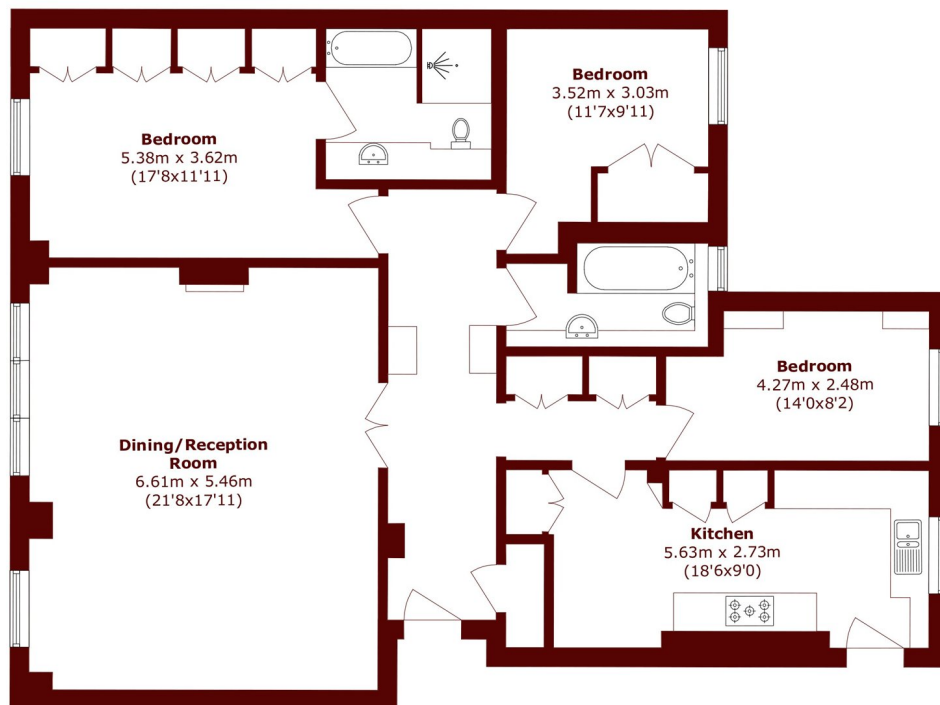








STEP INSIDE DUCHESS OF BEDFORDS WALK



Ground Floor

Total area (approx.): 124.0 sq. m (1334.7 sq. ft)

Kensington
020 7368 4450

Energy Rating: E We aim to make our particulars both accurate and reliable. However, they are not guaranteed; nor do they form part of an offer or contract. If you require clarification on any points then please contact us, especially if you're traveling some distance to view. Please note that appliances and heating systems have not been tested and therefore no warranties can be given as to their good working order

**MARSH &
PARSONS**