



* No Onward Chain * Beautifully refurbished throughout in 2025, this immaculate terraced home offers contemporary open plan living, three spacious bedrooms and a generous west facing garden. Positioned in a highly convenient Westcliff-on-Sea location close to sought-after schools, transport links, parks and popular amenities, this property is ready to move straight into.

- Fully Refurbished Throughout in 2025 and No onward Chain
- Open Plan Kitchen/Diner
- Bay Fronted Master Bedroom
- Modern Three Piece Bathroom
- Double Glazing
- Bay Fronted Lounge
- Entrance Hall with Ample Storage
- Two Further Well Proportioned Bedrooms
- Generous West Facing Rear Garden
- Gas Central Heating

Beedell Avenue

Westcliff-on-Sea

£340,000

Offers Over



Beedell Avenue



This stunning terraced house has been completely refurbished this year, presenting a modern and stylish interior throughout. The home welcomes you with an entrance hall boasting ample understairs storage, leading into a bay fronted lounge that opens seamlessly into the open plan kitchen/diner. The first floor offers a bay fronted master bedroom, a second double bedroom, a single bedroom, and a modern three piece bathroom. Externally, the property enjoys a spacious west facing rear garden with decking and an artificial lawn, ideal for relaxing and entertaining. Additional benefits include double glazing and gas central heating.

Situated on Beedell Avenue in Westcliff-on-Sea, this property is located within catchment for Chase High School and The Westborough School, and is also close to excellent grammar schools. The home sits just moments from London Road, reliable bus links, Westcliff Train Station, Chalkwell Park, and the seafront, while being close to the Palace Theatre and Southend Hospital. This highly convenient position offers an excellent blend of family-friendly amenities and commuter options.

Three Bedroom Terraced House

Entrance Hall

17'10 x 5'11

Lounge

16'1 x 12'3

Dining Room

13'11 x 10'8

Kitchen

9'5 x 7'1

Landing

Bedroom One

16'1 x 11'7

Bedroom Two

13'4 x 11'7

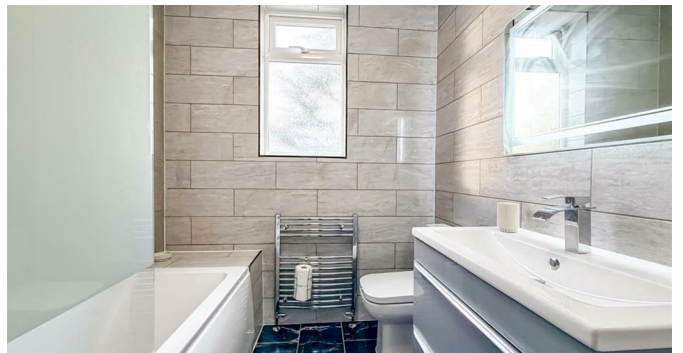
Bedroom Three

8'8 x 6'7

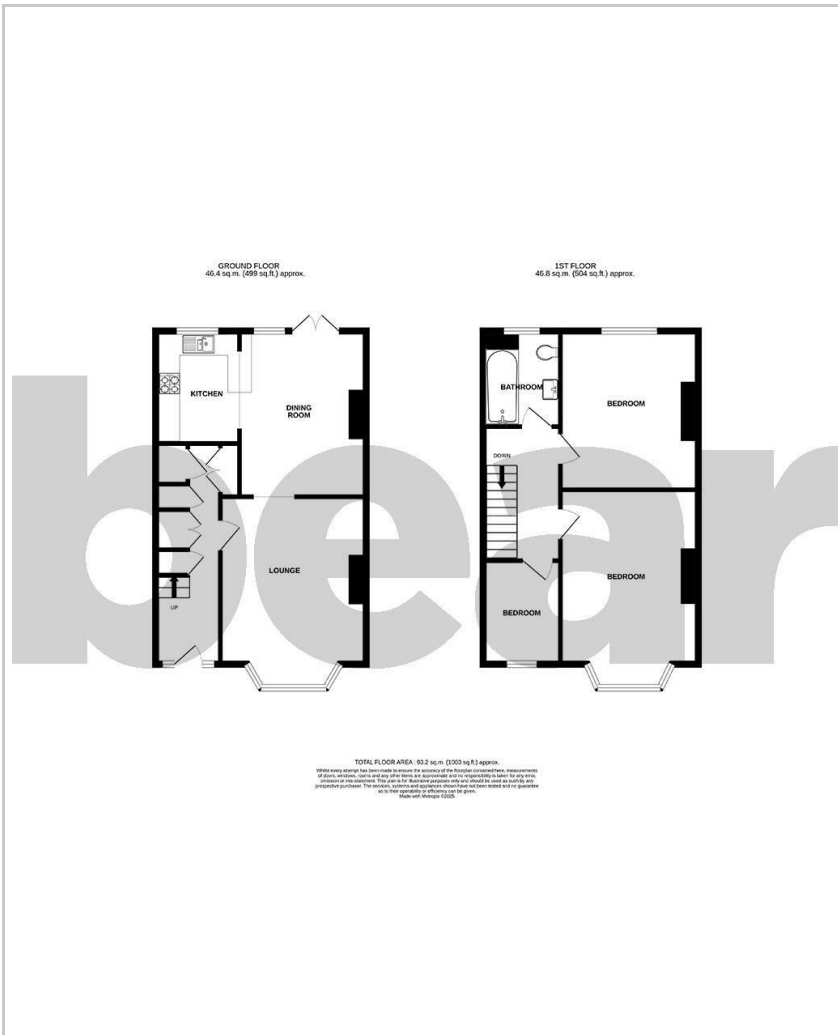
Three Piece Bathroom

8'0 x 6'6

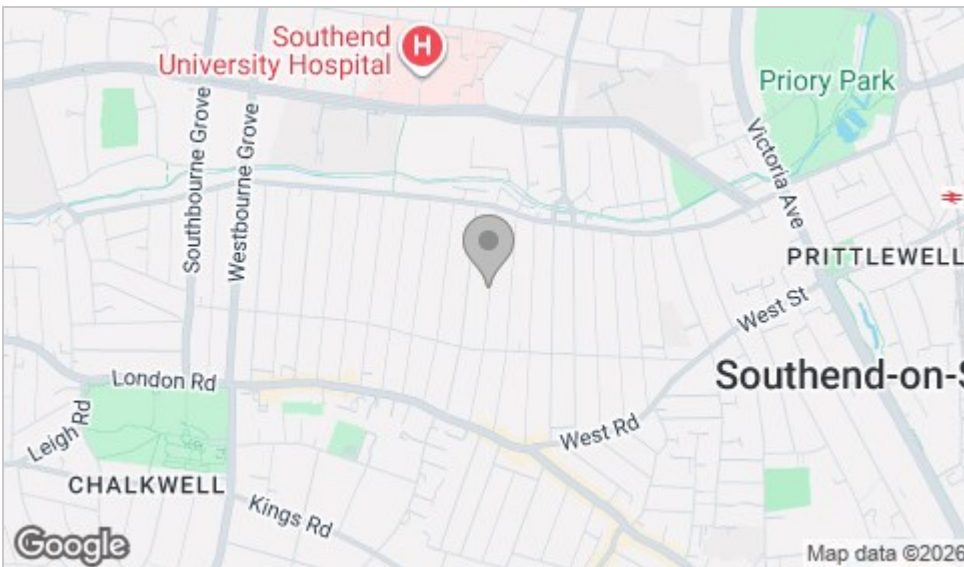
West Facing Garden



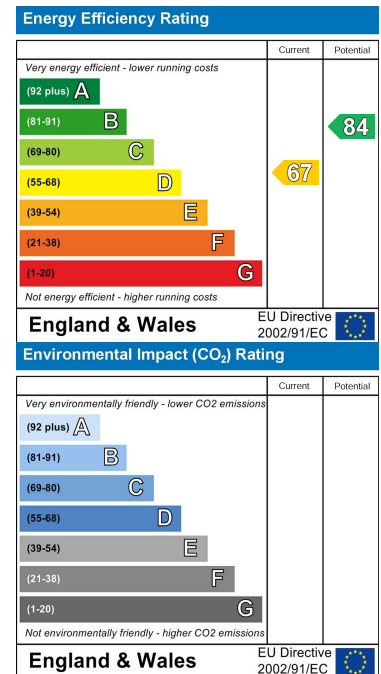
Floor Plan



Area Map



Energy Efficiency Graph



Viewing

Please contact our Southend-on-Sea Office on 01702 811211 if you wish to arrange a viewing appointment for this property or require further information.

These particulars, whilst believed to be accurate are set out as a general outline only for guidance and do not constitute any part of an offer or contract. Intending purchasers should not rely on them as statements of representation of fact, but must satisfy themselves by inspection or otherwise as to their accuracy. No person in this firm's employment has the authority to make or give any representation or warranty in respect of the property.

204 Woodgrange Drive, Southend-on-Sea, Essex, SS1 2SJ

Office: 01702 811211 info@bearestateagents.co.uk <https://www.bearestateagents.co.uk>