



Cormorant Way, Newport

Offers in the Region Of £150,000

- Three Bedrooms
- Family Bathroom
- Living Room
- Kitchen/Diner
- Enclosed Rear Garden
- Single Driveway
- Close To Schools, Shops and Leisure Facilities
- Excellent Transport Links
- EPC Rating: C



 3  1  1

Pinkmove

01633 746088
team@pinkmove.co.uk

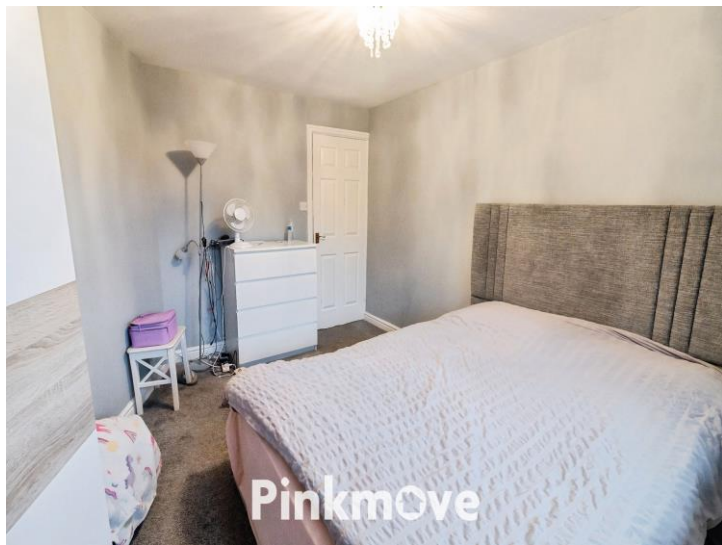


About the property

This three-bedroom terraced home situated on the residential area of Cormorant Way, Newport. The ground floor features a welcoming living room and a modern kitchen/diner ideal for family meals and entertaining. Upstairs, you'll find three adaptable bedrooms that can serve as sleeping spaces, a home office, or a hobby room, along with a family bathroom. Outside, the property boasts an enclosed rear garden, perfect for relaxing or outdoor dining, and to the front, a single driveway provides off-road parking.

Cormorant Way is situated in a residential area with excellent local amenities. Nearby, you'll find a range of shops for everyday essentials, as well as larger retail options within easy reach. Families will appreciate the proximity to schools, making this an ideal choice for those with children. Transport links are superb, with quick access to the M4 for commuting to Cardiff, Bristol, and beyond, and Newport city centre is just a short drive away, offering rail connections and a vibrant mix of shopping, dining, and leisure facilities.





Accommodation

Kitchen/Diner

9' 9" x 14' 7" (2.97m x 4.45m)

Living Room

19' 3" x 12' 4" (5.87m x 3.76m)

Max Measurements

Downstairs WC

5' 10" x 2' 5" (1.78m x 0.74m)

Bedroom 1

12' 9" x 12' 4" (3.89m x 3.76m)

Max Measurements

Bedroom 2

12' 9" x 9' 4" (3.89m x 2.84m)

Bedroom 3

12' 9" x 5' 6" (3.89m x 1.68m)

Bathroom

6' 2" x 6' 4" (1.88m x 1.93m)

01633 746088

team@pinkmove.co.uk

Pinkmove

Floorplan

Ground Floor

Approx. 42.9 sq. metres (462.1 sq. feet)



First Floor

Approx. 43.2 sq. metres (464.5 sq. feet)



Total area: approx. 86.1 sq. metres (926.6 sq. feet)

62 Cormorant Way

Important Information

Note while we endeavour to make our sales details accurate and reliable, if there is any point which is of particular interest to you, please contact the office and we will be pleased to confirm the position for you. We have not personally tested any apparatus, equipment, fixtures, fittings or services and cannot verify they are in working order or fit for their purposes. Nothing in these particulars is intended to indicate that carpets or curtains, furnishings or fittings, electrical goods (whether wired or not). Gas fires or light fittings or any other fixtures not expressly included form part of the property offered for sale. This computer generated Floorplan, if applicable, is intended as a general guide to the layout and design of the property. It is not to scale and should not be relied upon for dimensions. Tenure: We cannot confirm the tenure of the property as we have not had access to the legal documents. The buyer is advised to obtain verification from their solicitor or surveyor.

Peter Alan Limited is registered in England and Wales under company number 2073153, Registered Office is Cumbria House, 16-20 Hockliffe Street, Leighton Buzzard, Bedfordshire, LU7 1GN. VAT Registration Number is 500 2481 05. For activities relating to regulated mortgages and non-investment insurance contracts, Peter Alan Limited is an appointed representative of Connells Limited which is authorised and regulated by the Financial Conduct Authority. Connells Limited's Financial Services Register number is 302221. Most buy-to-let

