



Guide Price
£300,000
Freehold

3x  1x  2x 

Sussex Road, New Romney, Kent, TN28

Wards
Helping you move forwards



Main features

- Family home with huge potential to improve or extend (subject to consents)
- Large rear garden
- Separate lounge and dining room
- Close to shops and amenities
- Ideal location for exploring coast or countryside

Accommodation

GROUND FLOOR

Entrance Hall

Lounge: 13'3 x 12'6 (4.04m x 3.81m)

Dining Room: 11'3 x 10'8 (3.43m x 3.25m)

Kitchen: 10'4 x 7'8 (3.15m x 2.34m)

FIRST FLOOR

Landing

Bedroom 1: 13'5 x 11'3 (4.09m x 3.43m)

Bedroom 2: 11'3 x 10'4 (3.43m x 3.15m)

Bedroom 3: 8'6 x 7'11 (2.59m x 2.41m)

Bathroom

Separate Toilet

OUTSIDE

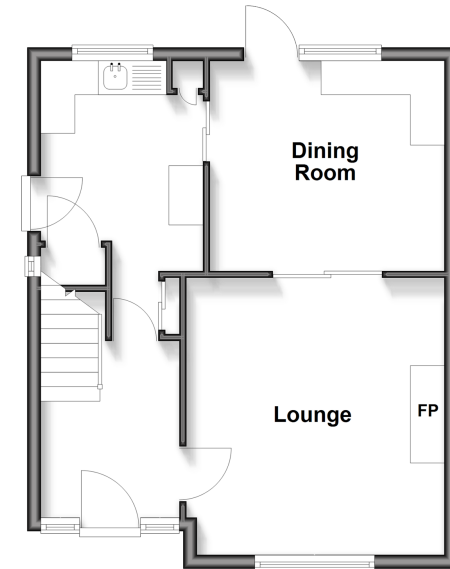
Off Road Parking

Garage

Front & Rear Gardens

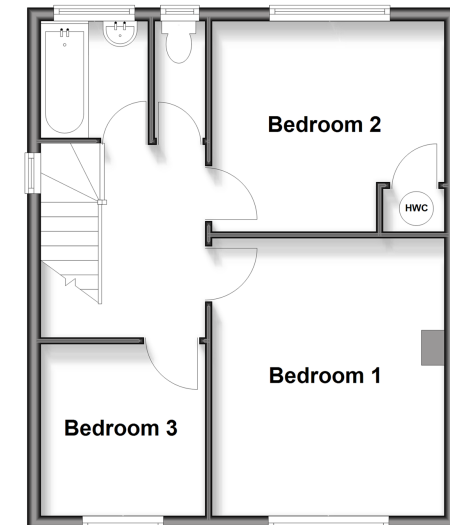
Ground Floor

Approx. 41.9 sq. metres (450.9 sq. feet)



First Floor

Approx. 43.2 sq. metres (464.5 sq. feet)



Call New Romney - 01797 363745 ■ wardsforkent.co.uk

- A private rental licensing scheme applies to some properties in this area, please check with the Local Authority before proceeding
- Legal advice should be taken to verify fixtures/fittings, planning, alterations and/or lease details
- Appliances & services are untested, dimensions are approximate and floor plans are not to scale



13526010/20260130/CA/SRH