



CARVERS

SALES & LETTINGS

63, Stanhope Road North
Darlington, DL3 7AP
£895 Per calendar month

Apartment



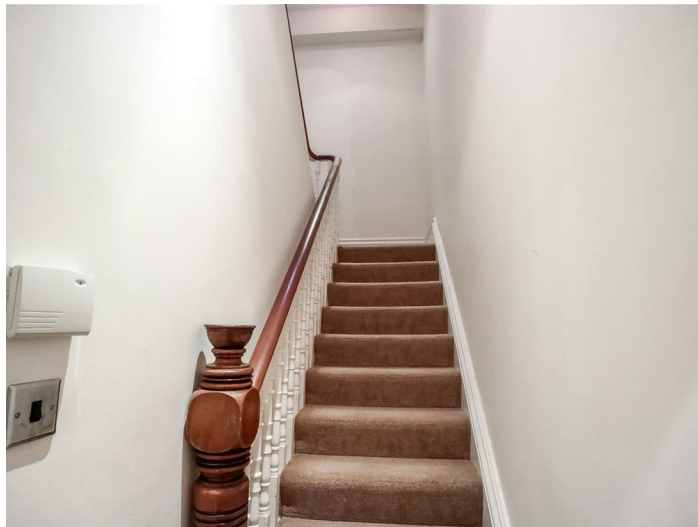
A beautifully presented 3 bedroomed maisonette situated in the heart of the West End of Darlington, with fantastic views over the town from the front and rear of the property.

Situated in a converted period town house with high ceilings and beautiful features, and intercom system for added security, the property is accessed through the main door which leads you to the apartment, the first flight of stairs invite you to the open plan hallway which leads onto a large modern sized kitchen/dining area, with integrated washing machine, fridge/freezer and double oven with hob which overlooks the well maintained communal patio area to the rear of the property. The large sized lounge is situated to the front of the property, the bay windows provide a fantastic view over Stanhope park area and beyond. Next to the lounge is the first of three double bedrooms.

A further flight of stairs with Velux window providing extra light as you lead up onto the first floor takes you up into the attic space that once was before being converted. The white bathroom suite consists of Bath with jets and over head shower, W/C and wash hand basin with Velux window. The Largest double bedroom is located to the front of the property with ensuite shower, wash hand basin and heated towel rail which can be also located from the landing area as well as the bedroom, the third double bedroom has amazing views over the whole of Darlington centre.

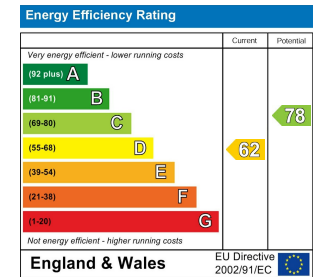
The communal yard/patio area is situated to the rear and accessible from the communal entrance, this can be used by all 3 properties and it does have a designated parking space at the rear of the property.

This is a unique opportunity to rent such high standard accommodation within walking distance to the town centre, bus routes and local amenities, viewing is strongly advised.



- 3 bedroomed maisonette
- Fantastic views over the town
- First flight of stairs invite you to the open plan hallway
- Large sized lounge
- The Largest double bedroom is located to the front of the property with ensuite shower
- Situated in the heart of the West End of Darlington
- Situated in a converted period town house
- Large modern sized kitchen/dining area
- Bathroom suite
- The communal yard/patio area is situated to the rear





Property size taken from EPC
sq ft



Searching 1,000s of mortgages
 Access to 12,000+ products from 90+ lenders across the UK.
 Call: 01325 370341 Visit: Any of our offices
 Web: mortgageadvicebureau.com/carvers



Your home may be repossessed if you do not keep up repayments on your mortgage.
 There may be a fee for mortgage advice. The actual amount you pay will depend upon your circumstances.
 The fee is up to 1% but a typical fee is 0.3% of the amount borrowed.







These particulars do not constitute any part of an offer or contract. None of the statements contained in these particulars are to be relied on as statements or representations of fact and any intending purchaser must satisfy themselves by inspection or otherwise to the correctness of each of the statements contained in these particulars. The vendor does not make or give, and neither Carvers nor any person in their employment has any authority to make or give any representation or warranty whatever in relation to this property.