



CUTTER LANE, SE10

£445,000

One bedroom
Private balcony
Eighth floor modern apartment
Side river view
24-hour concierge
Energy rating: b

@marshandparsons
marshandparsons.co.uk

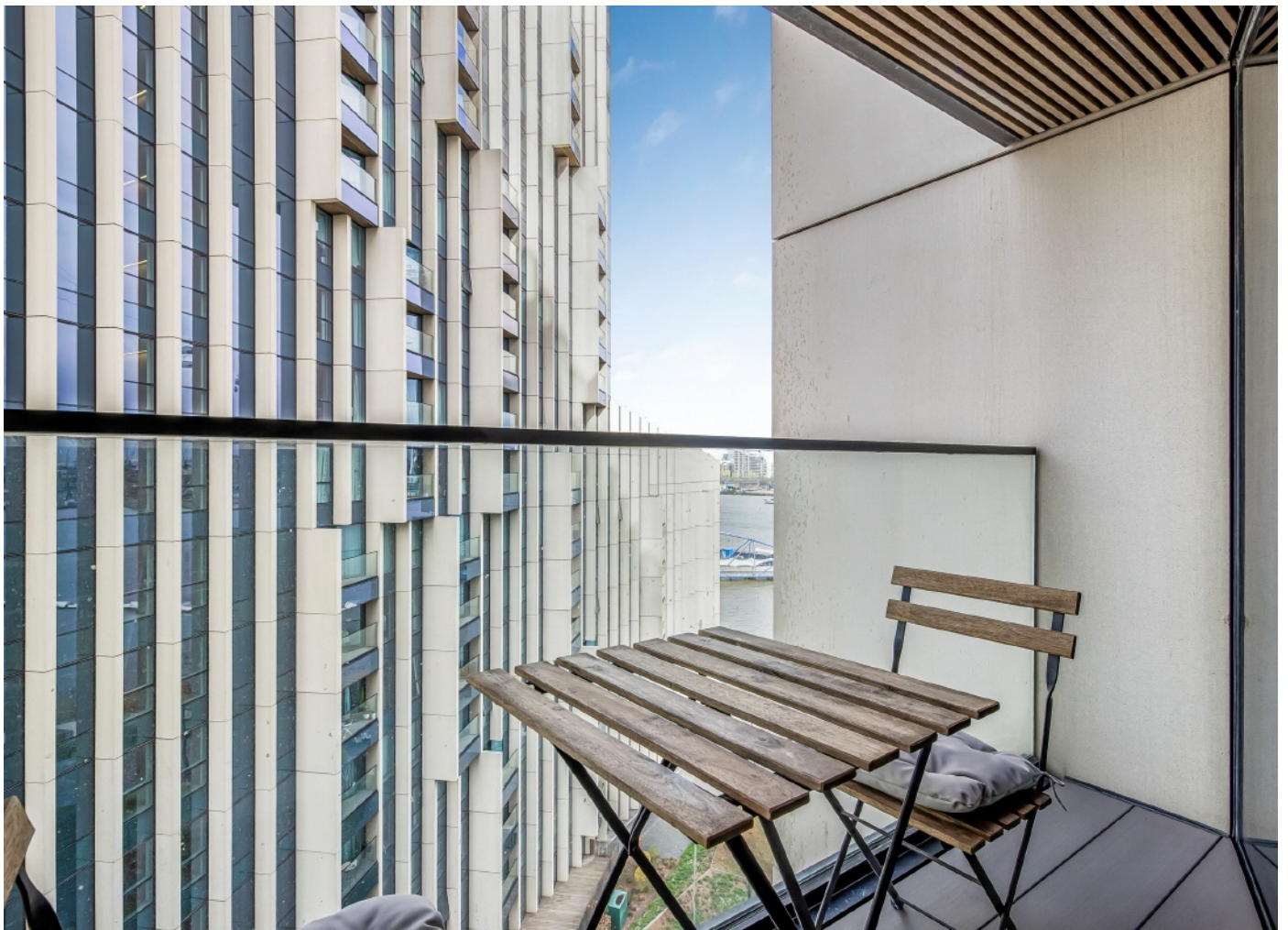
MARSH &
PARSONS



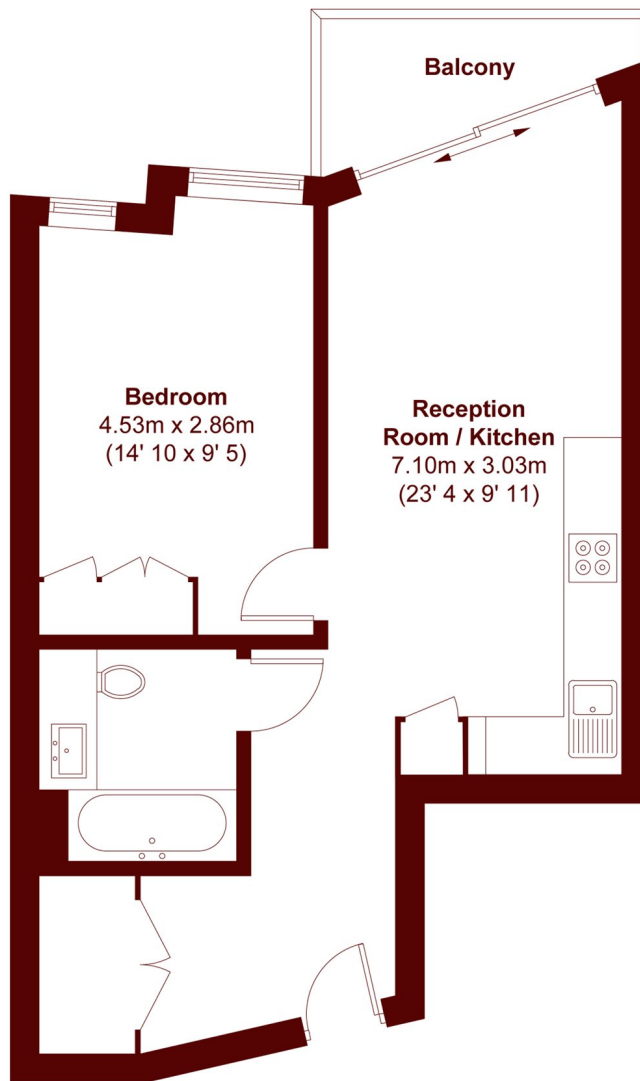
ABOUT THE PROPERTY

A well-presented one bedroom apartment located on the eighth floor of the sought after Upper Riverside development on Greenwich Peninsula. The property features a bright open plan kitchen and reception area leading onto a private balcony enjoying a river facing view of the Thames. The bedroom is generously sized with built-in storage, complemented by a modern bathroom. Residents benefit from access to concierge, gym, swimming pool and communal facilities.

Conveniently located moments from North Greenwich underground station (Jubilee Line), with excellent connections to Canary Wharf and London Bridge, as well as easy access to the O2 and riverside amenities.



STEP INSIDE CUTTER LANE



APPROX. GROSS INTERNAL FLOOR AREA = 512 SQFT / 47.6 SQM
APPROX. GROSS EXTERNAL BALCONY AREA = 28 SQFT / 2.6 SQM

Greenwich
020 8312 8312

Energy Rating: B We aim to make our particulars both accurate and reliable. However, they are not guaranteed; nor do they form part of an offer or contract. If you require clarification on any points then please contact us, especially if you're traveling some distance to view. Please note that appliances and heating systems have not been tested and therefore no warranties can be given as to their good working order

MARSH &
PARSONS