



**Guide Price**  
**£90,000**

**Leasehold**

1x 🏠 1x 🚗 1x 🚗

**The Metropole, New  
Street, Dover, Kent,  
CT17**

**OVER 60?**

Secure this property  
for up to **59% less!**

*Wards*  
Helping you move forwards



## Main features

- Chain free
- Good decorative order
- Duplex apartment, lots of space
- Ideal first time buy or a ready made investment
- Close to shops and Dover Priory railway station with its fast link to London

## Accommodation

### SECOND FLOOR

Entrance Hallway

Lounge : 15'4 x 12'10 (4.68m x 3.91m)

Kitchen/Diner: 12'9 x 7'2 (3.89m x 2.19m)

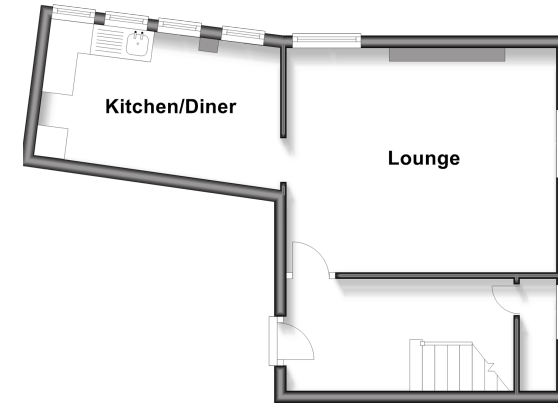
### THIRD FLOOR

Landing

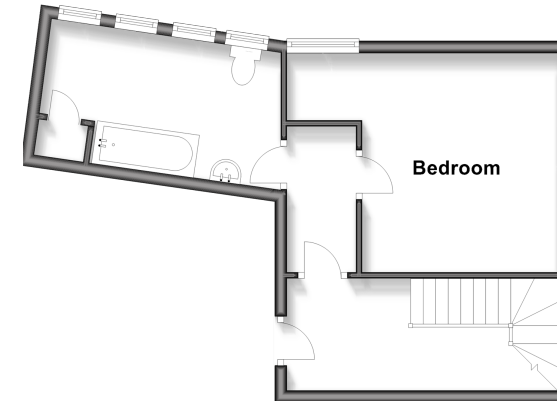
Bathroom : 12'5 x 7'5 (3.79m x 2.26m)

Bedroom : 12'2 x 12'2 (3.71m x 3.71m)

**Second Floor**  
Approx. 33.8 sq. metres (363.9 sq. feet)



**Third Floor**  
Approx. 33.3 sq. metres (358.0 sq. feet)



**Call Dover - 01304 214876 ■ [wardsof Kent.co.uk](http://wardsof Kent.co.uk)**

- Legal advice should be taken to verify fixtures/fittings, planning, alterations and/or lease details
- Appliances & services are untested, dimensions are approximate and floor plans are not to scale
- Through a Homewise Home For Life Plan people aged 60+ can secure this property for up to 59% less, by purchasing a Lifetime Lease



10735886/20260117/TE/OV