



WETHERELL
MAYFAIR'S FINEST PROPERTIES



Chesterfield Gardens, W1J

£1,303 Per week

A two double bedroom apartment on the fifth floor with lift access. This property is one of Mayfair's most sought after purpose built blocks.

There is a large double reception room with plenty of space for dining and entertaining guests and a separate modern kitchen.

There are two well proportioned double bedrooms with ample wardrobe storage, one with an en suite bathroom and the other serviced by the family bathroom.

This apartment is perfect for a couple that require a second guest bedroom or for two professional sharers as both bedrooms are of a similar size.

Chesterfield Gardens is situated just off Curzon Street. This apartment is only two streets away from the green spaces of Hyde Park and the world renowned Dorchester Hotel.

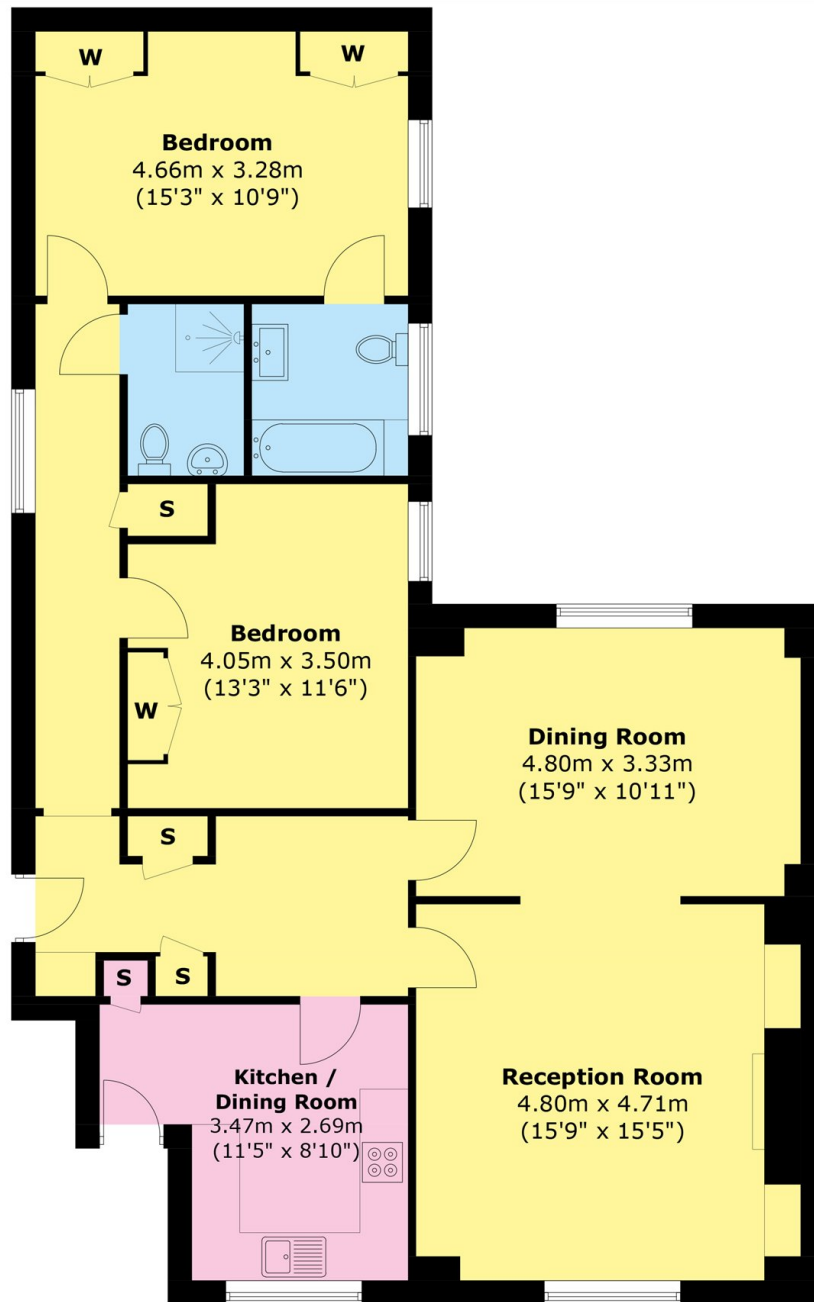


FEATURES

- Two Double Bedrooms • Two Bathrooms • Double Reception Room • 24-Hour Porter • Lift • Furnished •



Chesterfield Gardens, London, W1J



Fifth Floor

Area (approx.): 107.3 sq. m (1,155.0 sq. ft)



WETHERELL
MAYFAIR'S FINEST PROPERTIES

102 Mount Street,
London, W1K 2TH

T: 020 7529 5588
E: rentals@wetherell.co.uk

We aim to make our particulars both accurate and reliable. However they are not guaranteed; nor do they form part of an offer or contract. If you require clarification on any points then please contact us, especially if you're traveling some distance to view. Please note that appliances and heating systems have not been tested and therefore no warranties can be given as to their working order.



wetherell.co.uk