



Kingsdowne Road, KT6

£470,000

A beautifully designed two bedroom first floor apartment set within an elegant Victorian house conversion. There is a large reception room, separate modern kitchen with a breakfast bar, a large stylish bathroom with separate bath and shower and two bedrooms. This property also benefits from a share of the freehold, off-street parking and a well maintained south-west facing communal garden.

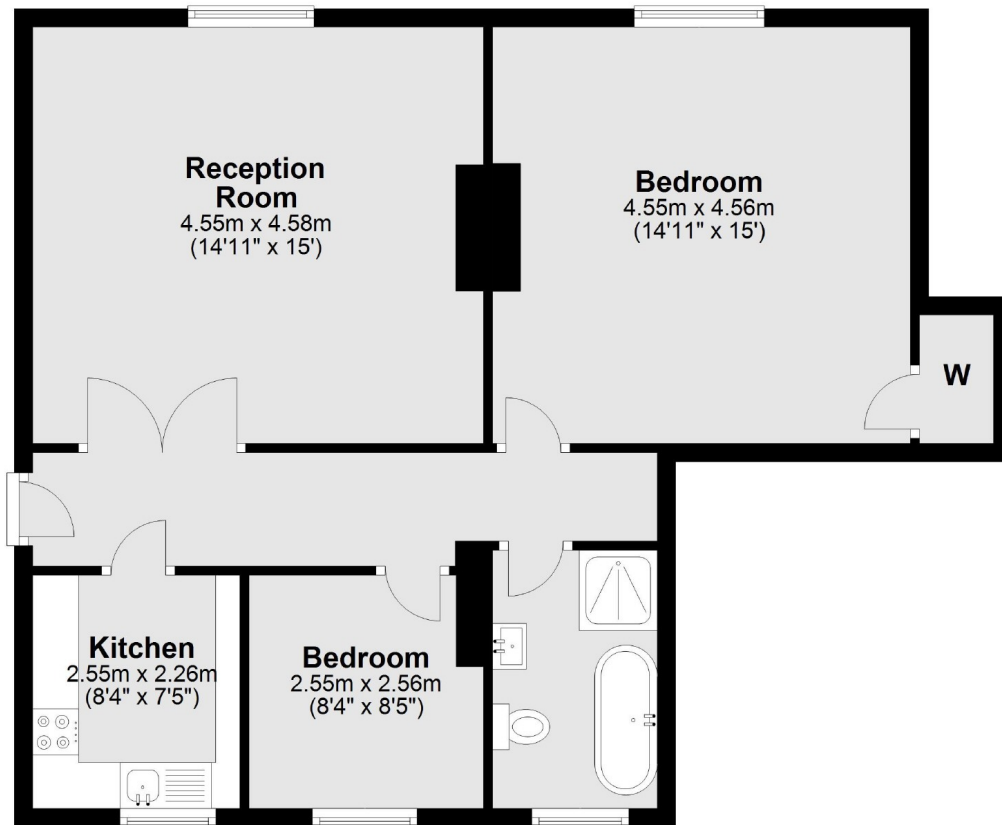
This desirable property is located on leafy Kingsdowne Road, just over half a miles walk away from Surbiton's popular high street and the mainline train station with fast and direct trains to London Waterloo in 16 minutes.

Features

- First Floor
- Newly Refurbished
- Two Bedrooms
- Communal Garden
- Off-Street Parking
- Share Of Freehold

Kingsdowne Road, Surbiton, KT6

First Floor



Total area: approx. 72.1 sq. metres (776.4 sq. feet)