



7, Crowmeole Drive, Copthorne, Shrewsbury, SY3 8AP
£995 Per Month



7, Crowmeole Drive, Copthorne, Shrewsbury, SY3 8AP

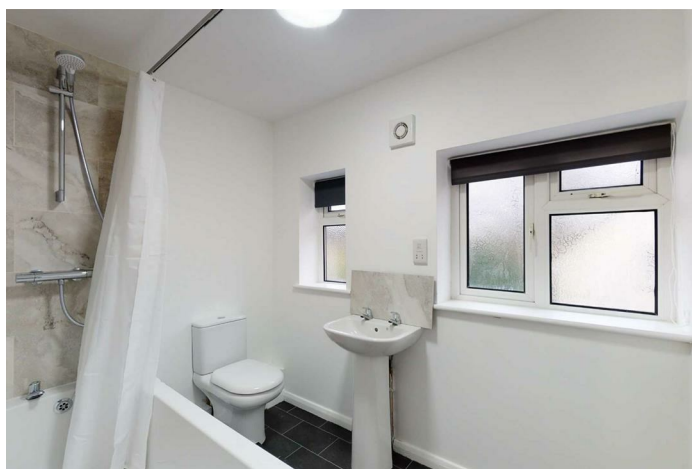
£995 Per Month

VIRTUAL TOUR AVAILABLE - Refurbished and spacious three double bedroom semi detached house in Copthorne, Shrewsbury. The house is located in the popular school catchments of Woodfield Infant and St George's Primary.

Available: 08/08/2026

Description

Comprising: Entrance hall with understairs storage cupboard, dining room, living room with attractive electric fire with surround and patio doors to rear, modern kitchen including oven, gas hob and dishwasher. Stairs to first floor landing, modern bathroom including shower and airing cupboard with combi boiler, three double bedrooms. Front and rear garden, brick outhouse, driveway parking for one car. Gas central heating, double glazing. EPC C



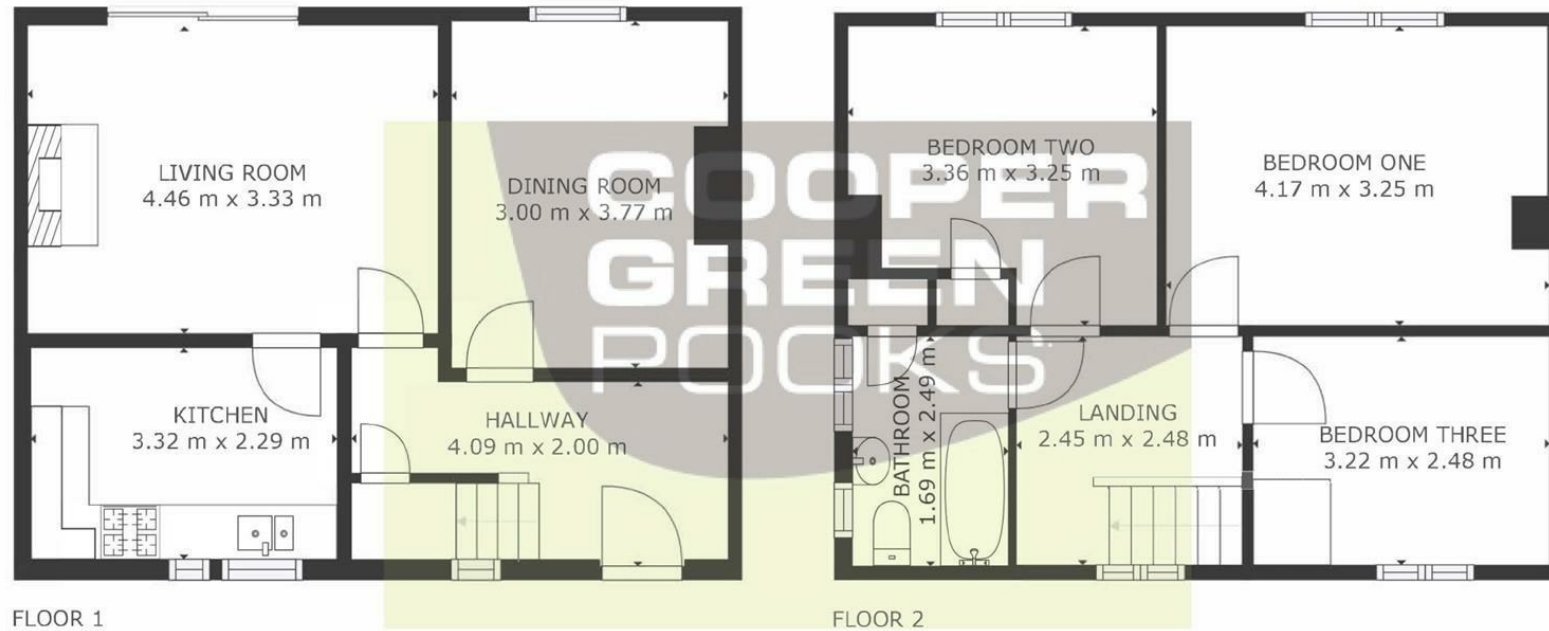
Unfurnished

Council Tax Band: B

Available: 8th August 2026

EPC: C

Floor Plans



GROSS INTERNAL AREA
FLOOR 1: 44 m², FLOOR 2: 44 m²
TOTAL: 89 m²
SIZES AND DIMENSIONS ARE APPROXIMATE, ACTUAL MAY VARY.



These particulars, whilst believed to be accurate are set out as a general outline only for guidance and do not constitute any part of an offer or contract. Intending purchasers should not rely on them as statements of representation of fact, but must satisfy themselves by inspection or otherwise as to their accuracy. No person in this firm's employment has the authority to make or give any representation or warranty in respect of the property.