

# FLETCHERS

ESTATE AGENTS

---



## Shepherd's Bush Road, W6

£275,000

A wonderfully refurbished and spacious studio flat in a popular Art Deco block in Brook Green. The property comes complete with a large, bright living space with feature 1930's style windows allowing for plenty of natural light, generous storage space that has been built in bespoke and a separate kitchen that has been recently modernised and comes complete with fitted appliances.

The property is offered to the market with a long lease and a share of the freehold. The block also benefits from lift access and is portered. A must see for first time buyers & investors alike offering excellent value for money in a central location.

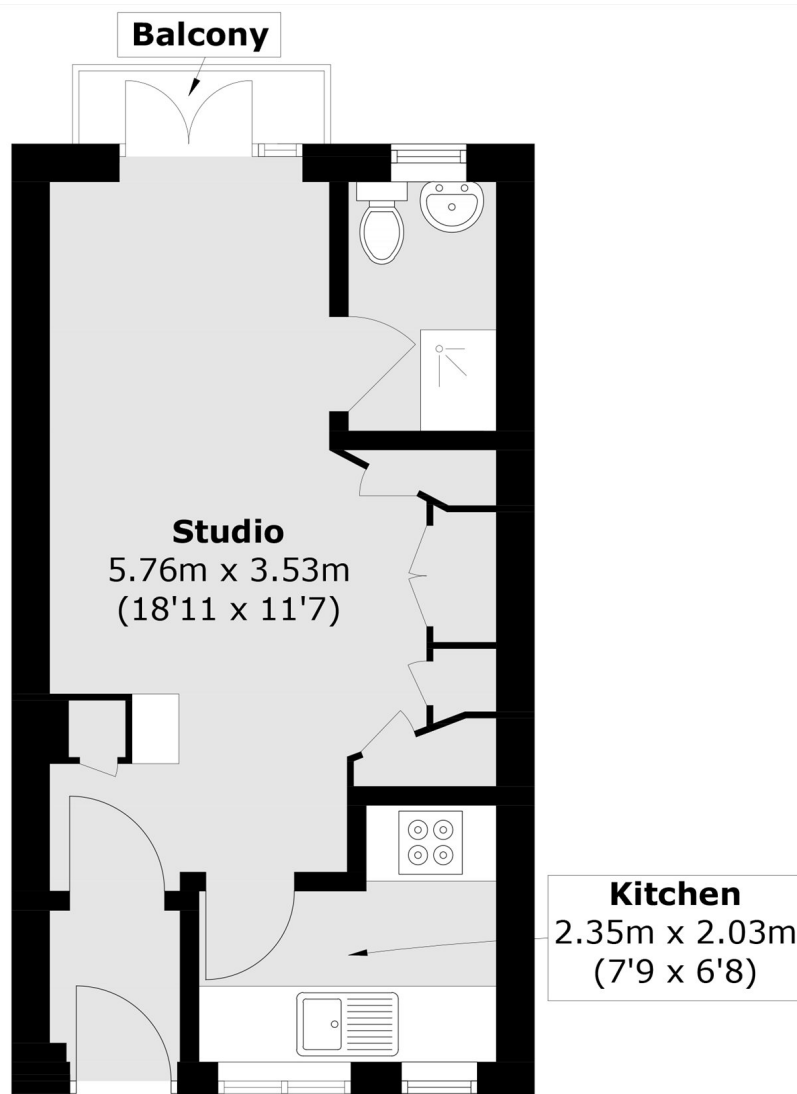
The Grampians is excellently located for the local shops and boutiques of Brook Green and the world renowned shopping centre, Westfield London. The flat is under a mile from Goldhawk Road (Hammersmith & City and Circle lines) and Shepherd's Bush Station (Central line) offering exceptional links in and out of the city.

• Share of Freehold • Art Deco Building • Lift Access • Roof Terrace • Great Condition • Portered Block (24/7) •



# FLETCHERS

ESTATE AGENTS



## Ground Floor

Total area (approx.): 25.0 sq. m (269.1 sq. ft)

Balcony: 1.1 sq. m (11.8 sq. ft)

Fletchers Brook Green Sales  
144 Shepherds Bush Road, Hammersmith, London, W6 7PB  
020 7603 1415  
[brookgreensales@fletcherestates.com](mailto:brookgreensales@fletcherestates.com)

Energy Rating: C. We aim to make our particulars both accurate and reliable. However they are not guaranteed; nor do they form part of an offer or contract. If you require clarification on any points then please contact us, especially if you're traveling some distance to view. Please note that appliances and heating systems have not been tested and therefore no warranties can be given as to their good working order.