

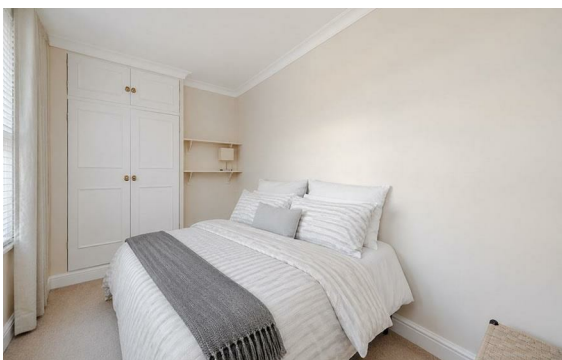


Upper Montagu Street, Marylebone, London, W1H

Rent £875 PCM

2 Bed | 2 Bath | 1 Reception

Please call us on 020 7724 2233 or email us info@newingtonstates.com to book a viewing.



A recently refurbished two-bedroom apartment offering modern interiors and generous living space in the heart of Marylebone. Positioned on the garden level with its own private entrance, the property features a spacious dual-aspect reception and dining area with wooden flooring, a fully integrated open-plan kitchen, and two well-proportioned bedrooms with fitted wardrobes. The principal bedroom benefits from an en-suite bathroom, complemented by a separate shower room. Doors from the reception area lead directly onto a private patio garden, creating valuable outdoor space.

Ideally located close to Baker Street Station and Marylebone Station, with easy access to Marylebone High Street and Regent's Park.

EPC Rating: C

Energy Efficiency Rating: C

Agents Note: Whilst every care has been taken to prepare these particulars, they are for guidance purposes only. All measurements are approximate and are for general guidance purposes only and whilst every care has been taken to ensure their accuracy, they should not be relied upon and potential buyers/tenants are advised to recheck the measurements.

NEWINGTON
— ESTATES —

60 Upper Montagu Street

London

W1H 1SN

020 7724 2233

info@newingtonestates.com

<http://www.newingtonestates.com>